



PEREGRINE
DIAMONDS LTD.



2014 Nunavut Mining Symposium Infrastructure: The Key to Realizing Mineral Wealth

David Willis

Land Administrator, Peregrine Diamonds Ltd.

“Infrastructure (n): *The large-scale public systems, services, and facilities of a country or region that are necessary for economic activity.”*

-Bing Dictionary

“Nunavut’s infrastructure in every area is far behind any other part of Canada. The lack of a road network, ports and harbours, paved runways, geology maps and topographic maps make exploration and mineral development in Nunavut much more expensive and a higher risk than in other Canadian jurisdictions.”

-Government of Nunavut, *Mineral Strategy, 2007*

“We understand the critical importance that infrastructure plays in promoting economic development in Canada’s North,”

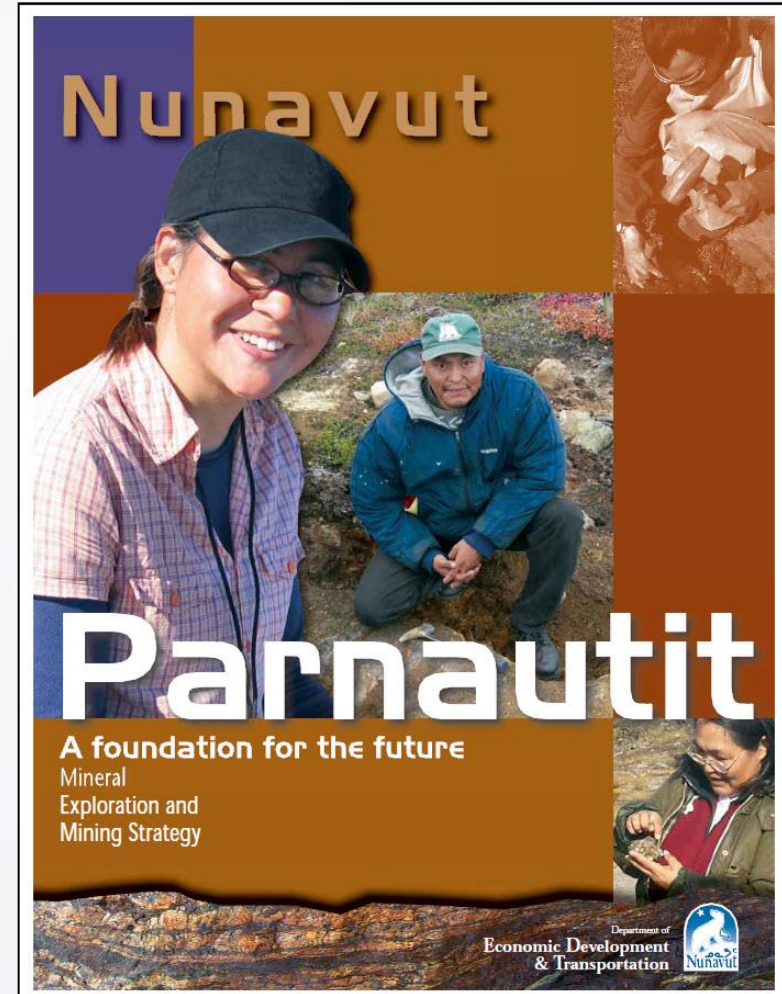
- Prime Minister Stephen Harper, April 18, 2011



CONTEXT – WHY IS MINERAL DEVELOPMENT IMPORTANT TO NUNAVUT?

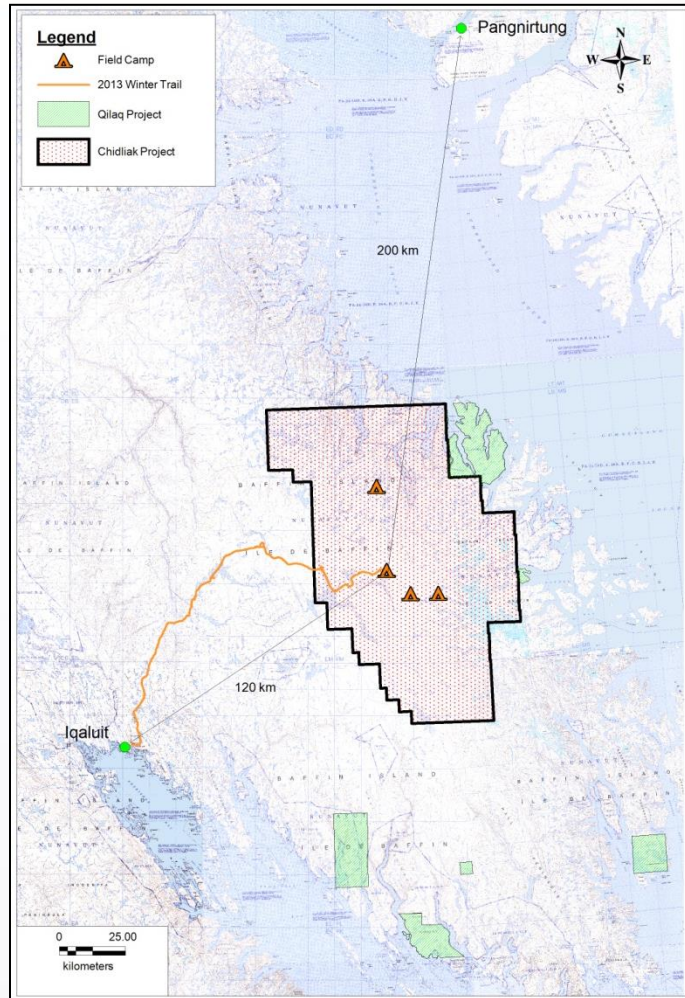
Responsible mineral development is critical for the economic well-being of Nunavut

- *“To create the conditions for a strong and sustainable minerals industry that contributes to a high and sustainable quality of life for all Nunavummiut” (P. 7)*
- *“It is argued that Nunavut’s future economic viability, and the improvement of the quality of life for Nunavummiut will depend on the development of these known and yet to be discovered (mineral) resources” (P. 44)*



March, 2007

CHIDLIAK PROJECT LOCATION



Iqaluit

Iqaluit

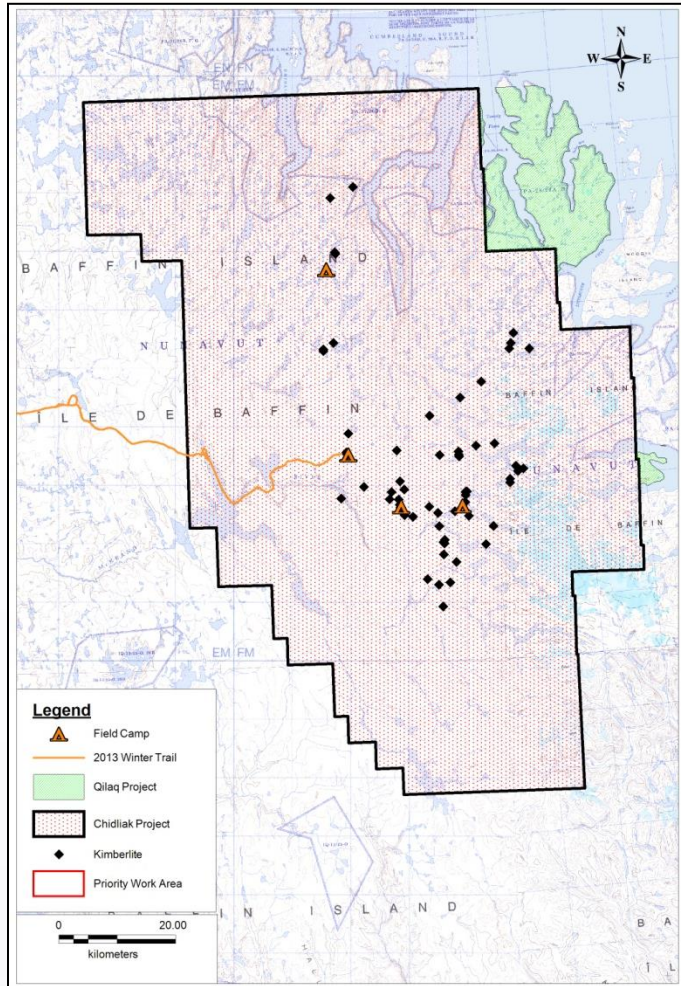
- 120 km to Chidliak
- Goods and services
- 6 year relationship with community



Pangnirtung

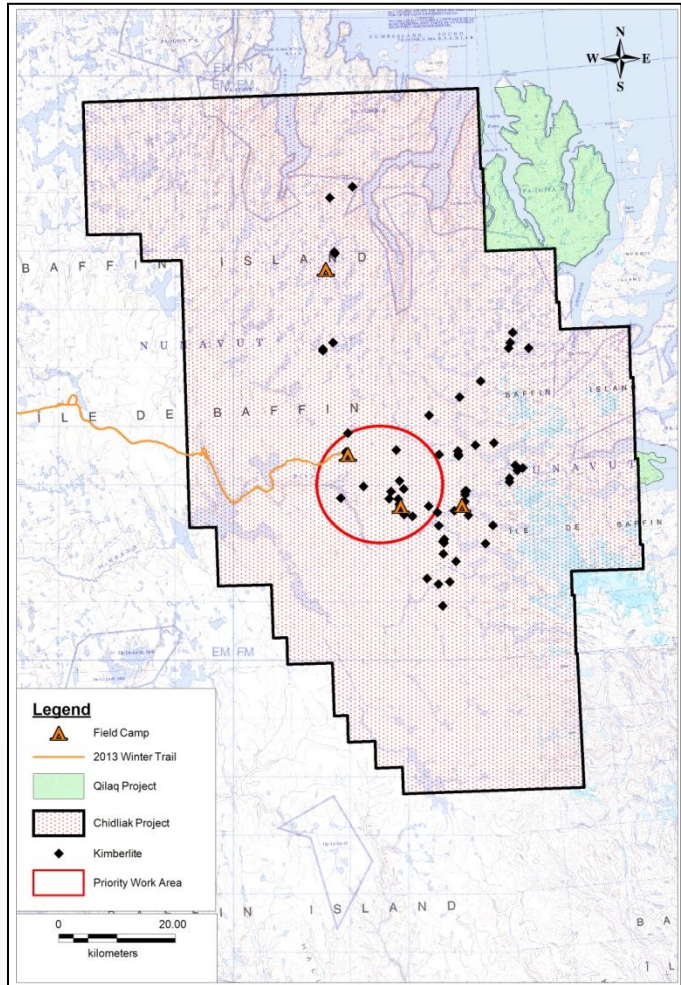
Pangnirtung

- 200 km to Chidliak
- Employee base
- 6 year relationship with community



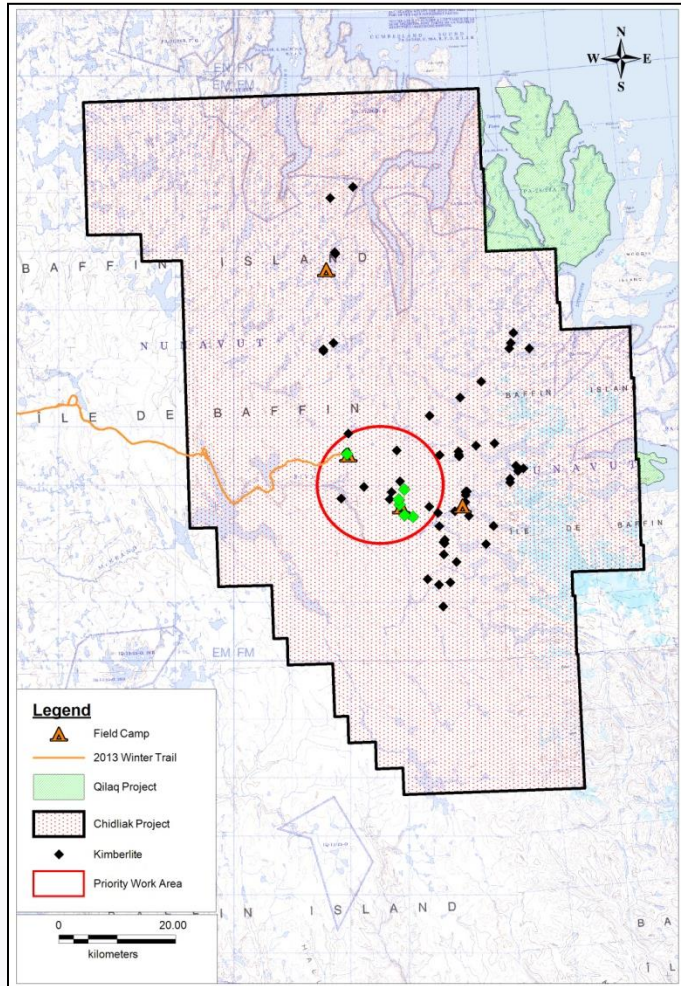
Chidliak Project

- First kimberlite discovery 2008
- 67 kimberlites discovered to date
- 6 high priority kimberlites
- CH-1, CH-6, CH-7, CH-31, CH-44, CH-45
- All work in 2014 will occur in priority area



Chidliak Project

- First kimberlite discovery 2008
- 67 kimberlites discovered to date
- 6 high priority kimberlites
- CH-1, CH-6, CH-7, CH-31, CH-44, CH-45
- All work in 2014 will occur in priority area



Chidliak Project

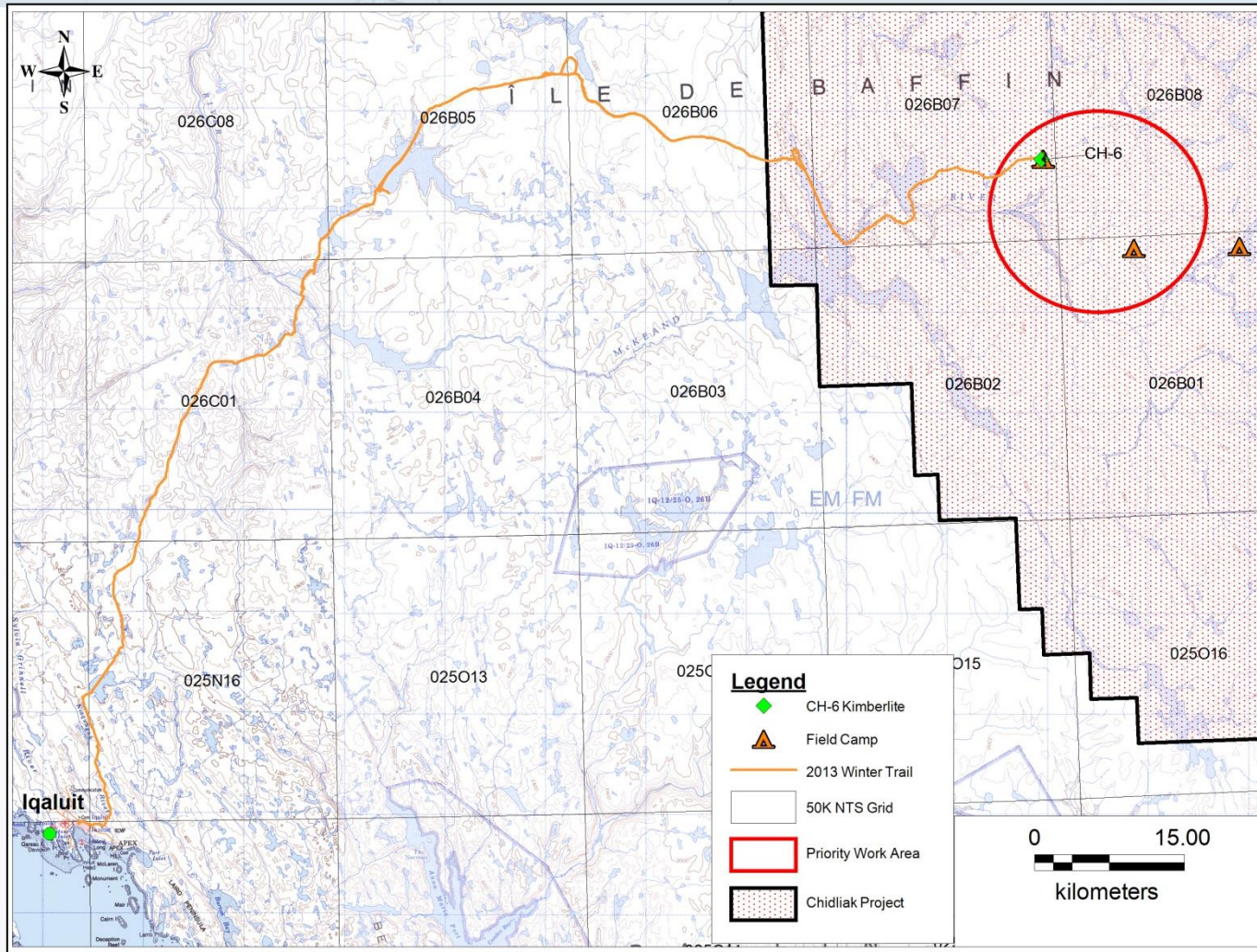
- First kimberlite discovery 2008
- 67 kimberlites discovered to date
- 6 high priority kimberlites
- CH-1, CH-6, CH-7, CH-31, CH-44, CH-45
- All work in 2014 will occur in priority area

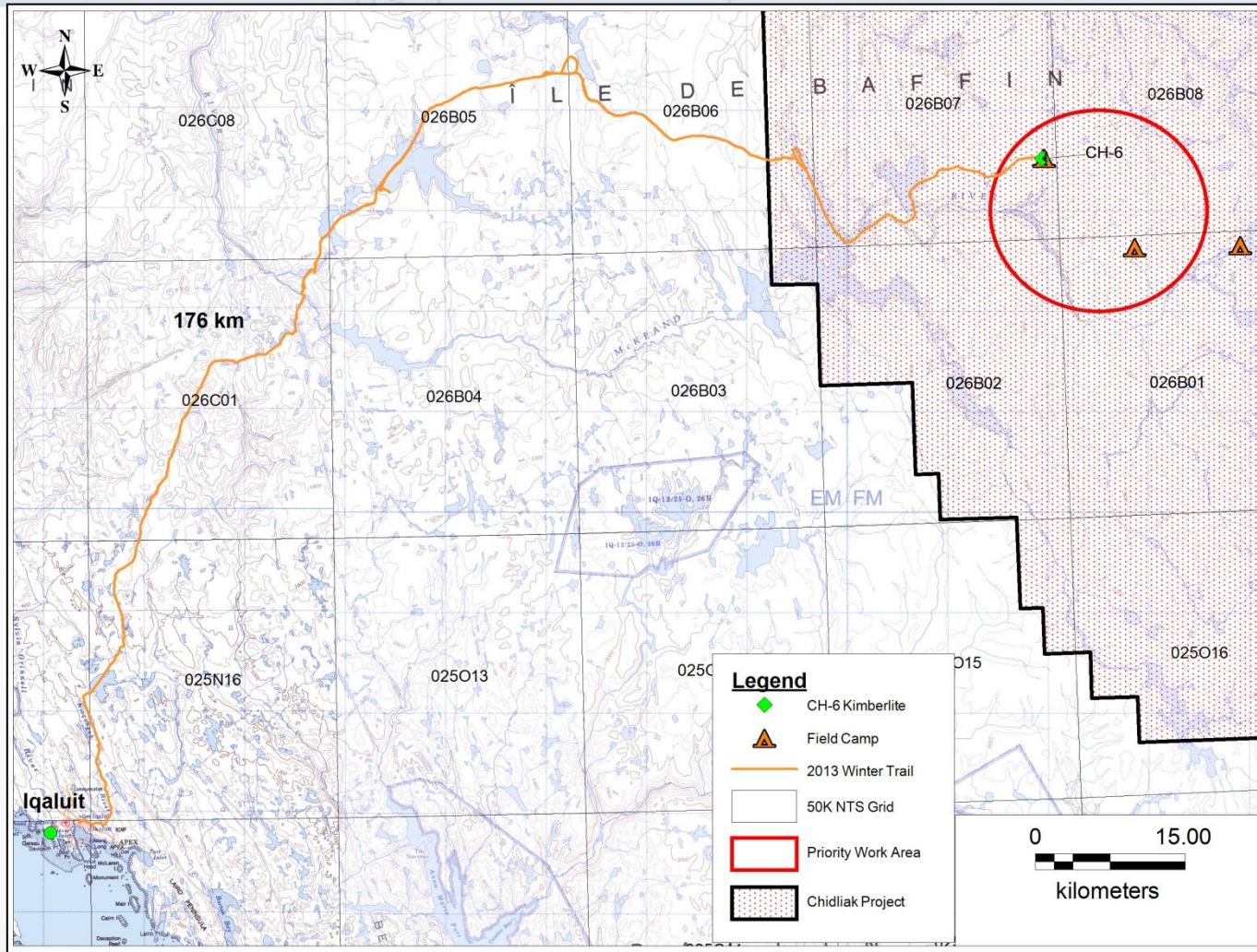
2013 CH-6 BULK SAMPLE

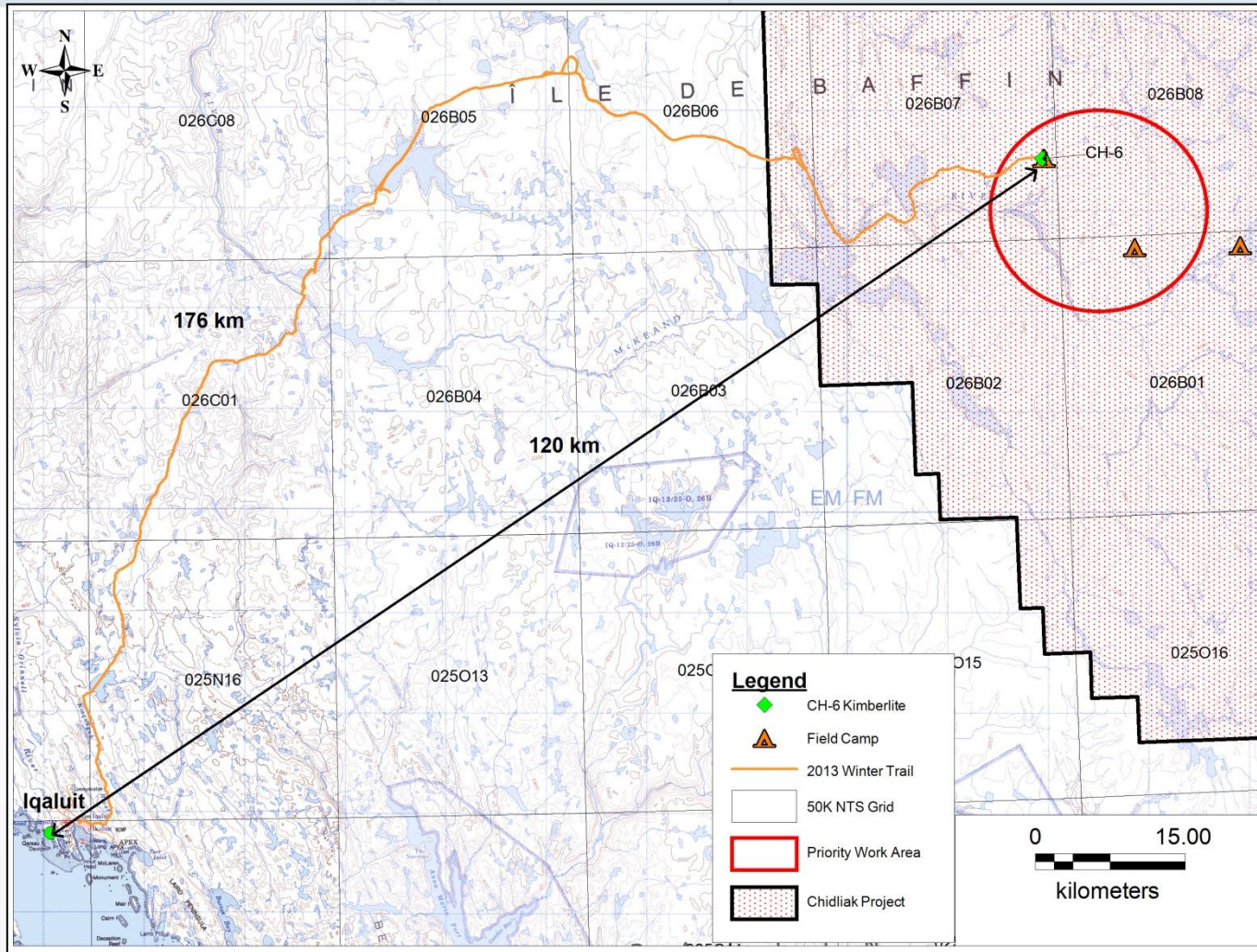
CH-6 Bulk Sample

- Collected April 2013
- 508 wet tonnes (404.2 dry) from trench
- Transported overland to Iqaluit
- Transported by sea to Montreal and then onto Sudbury for processing



























IQALUIT, NUNAVUT TO MONTREAL SEALIFT



- Sample stored at Iqaluit airport
- Sealift to Montreal

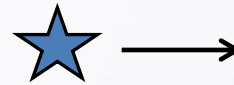
2013 CH-6 BULK SAMPLE RESULTS

CH-6 Bulk Sample

- 1,013.5 carat parcel of commercial size diamonds
- Estimated 2.58 carats of diamonds per tonne of rock
- Average price of \$213 per carat
- Estimated CH-6 hosts 5.7 million tonnes to a depth of 375 metres below surface



WHERE ARE WE GOING?



2005

2007

2008

2009

2013 - 2015

**Reconnaissance
Exploration**

**Land
Acquisition**

**1st Kimberlite &
Diamonds**

**Mini-bulk
Sampling &
Delineation**

**Advanced
Exploration &
Bulk Sampling**

**PEA/Pre-
feasibility/
Feasibility**

**Permitting & Mine
Construction**

**Mine
Opening**

Snap Lake



EKATI



Diavik



“I see a new Canada – a Canada of the North.”

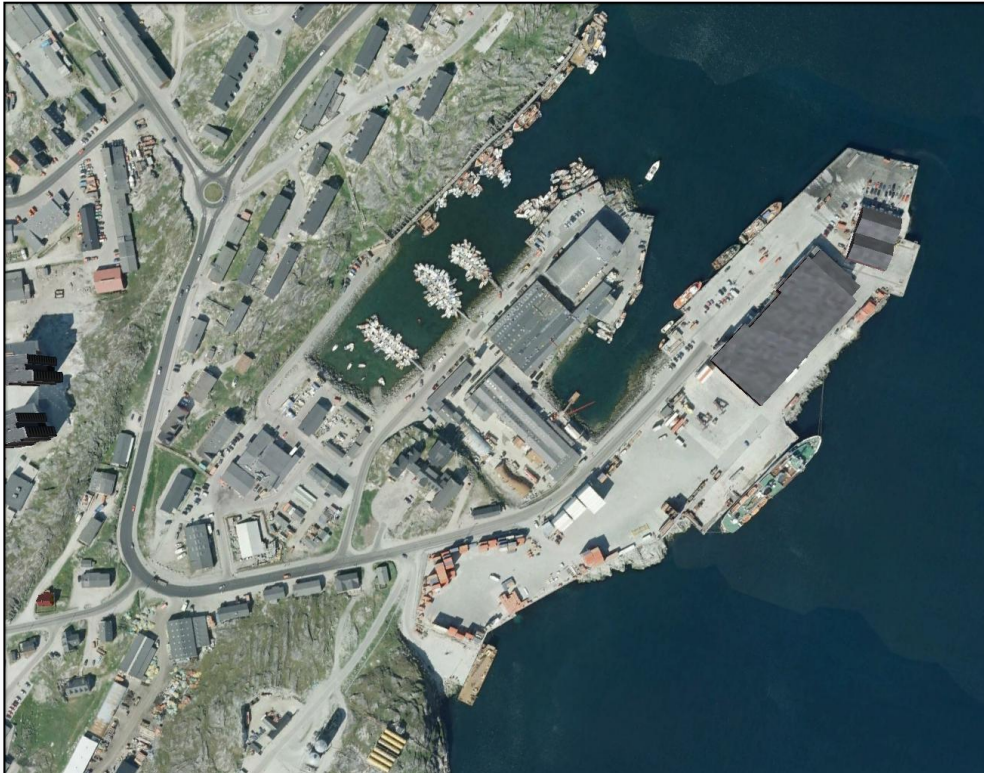
– Prime Minister John Diefenbaker, Northern Vision, Feb. 12, 1958

Infrastructure (n):

The large-scale public systems, services, and facilities of a country or region that are necessary for economic activity.

-Bing Dictionary

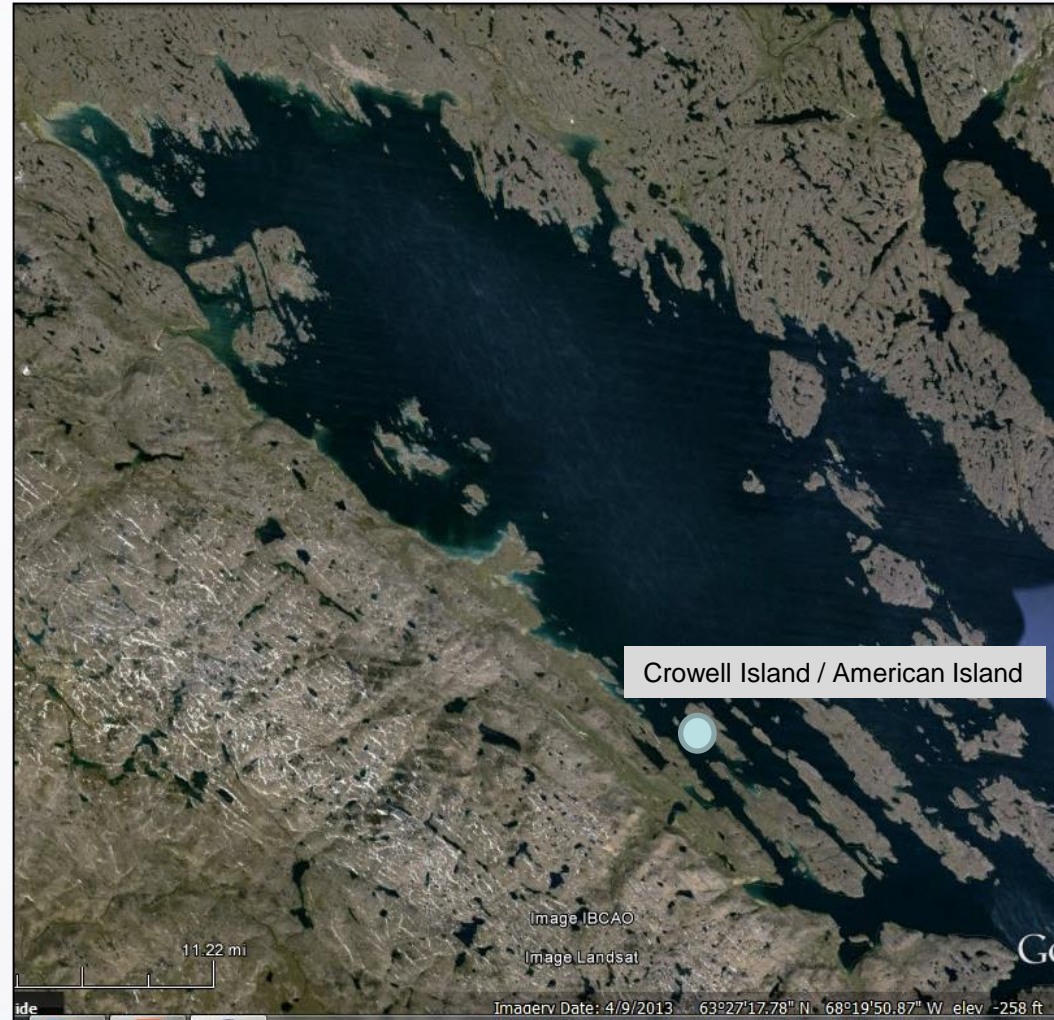
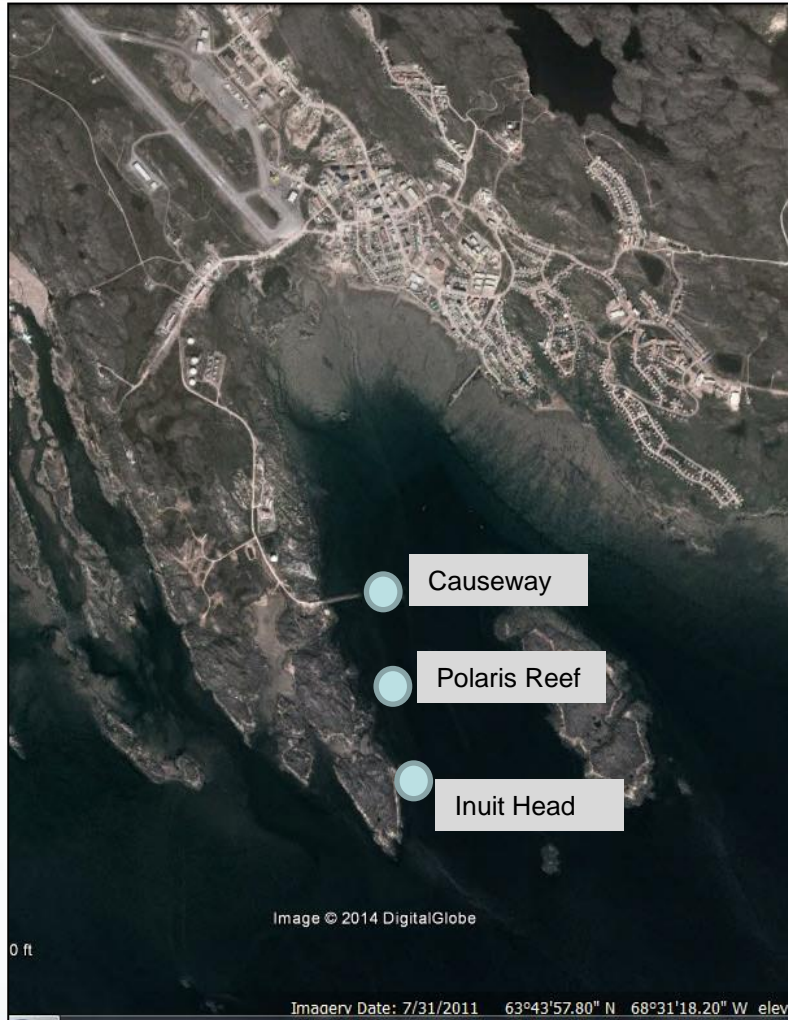
- 1) Port
- 2) Power
- 3) Road
- 4) People



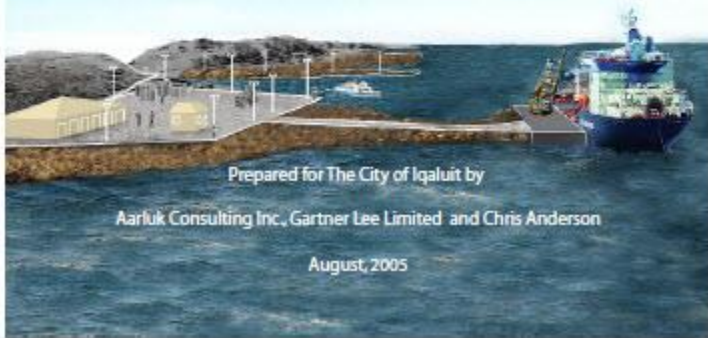
Nuuk Harbour - Greenland

- A port facility in Iqaluit would benefit the community
- At present there is a lack of marine infrastructure
- The economics of any future mine operation would be improved by a port
- 2005 Strategic Plan by the City of Iqaluit found a deepwater port to be “technically feasible and desirable.”

INFRASTRUCTURE - PORT



Strategic Plan for the Iqaluit Deepwater Port Project



“...the Nunavut legislature drafted a [plan](#) in 2010 that included two possible design and location options....”

*-Nunavut Sealift Firm renews call for basic beach infrastructure
Nunatsiaq Online, Jan. 30, 2014*

“In fact, the 2010 draft government proposal said it was the fifth study of a deep sea port for Iqaluit since 1975.”

*-Nunavut Sealift Firm renews call for basic beach infrastructure
Nunatsiaq Online, Jan. 30, 2014*

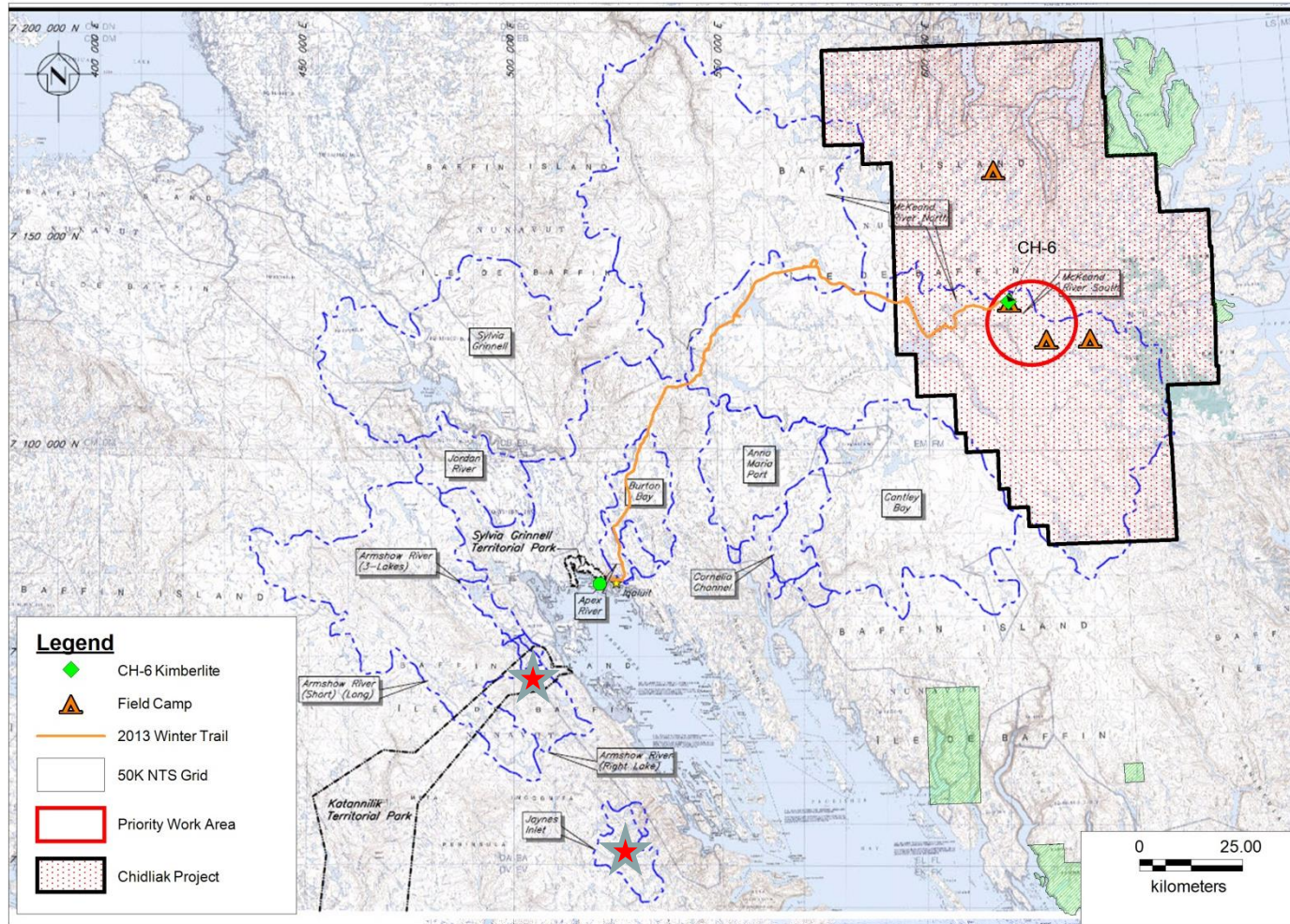


Buksefjord Hydroelectric Station - Greenland

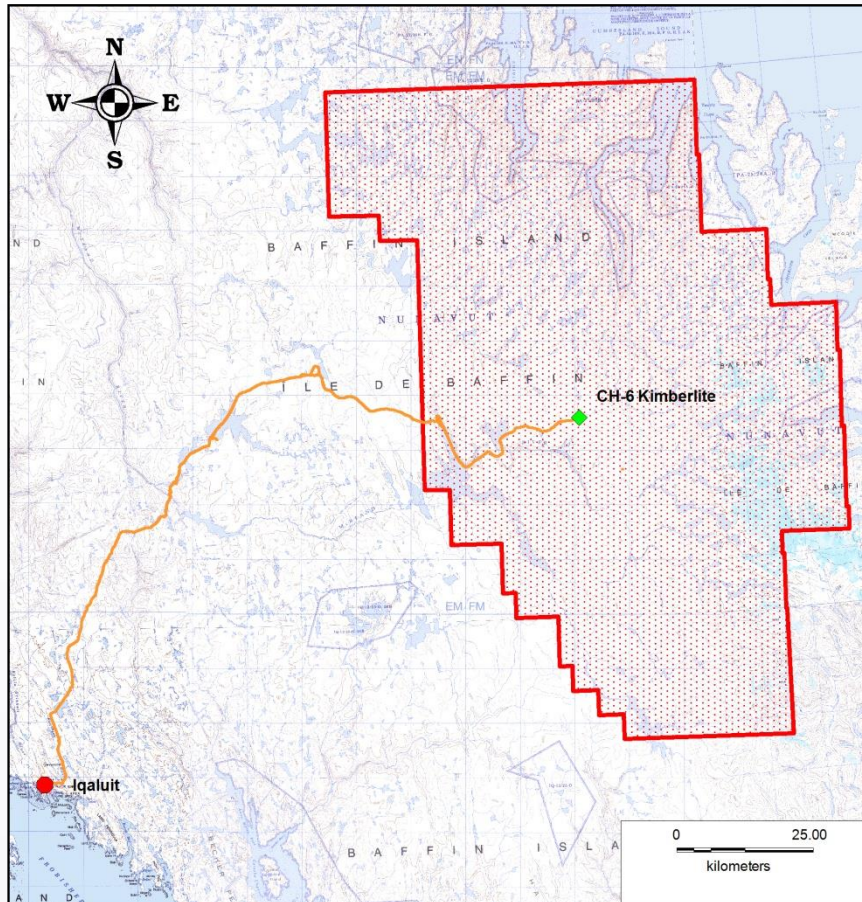


Buksefjord Hydroelectric Station - Greenland

- As Iqaluit grows so will demands for power
- Sustainable communities require cleaner and safer energy to maintain growth
- Excess power capacity provides additional options to companies ie: manufacturing
- Hydro-power is successfully used in Greenland
- Any future mine development will require facilities, offices and personnel in Iqaluit



QEC Iqaluit Hydro-Electric Generation Site Identification and Ranking p.74 (January 17, 2006)



2013 – Iqaluit to CH6 Winter Trail

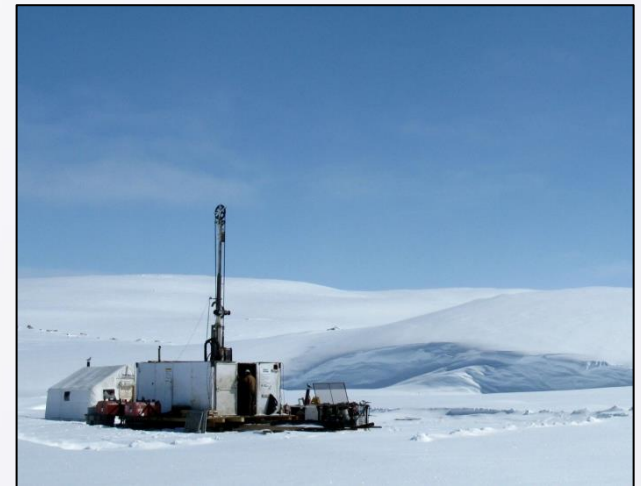
- Current site access options are flight or winter trail, both of which are weather dependant and have short time windows
- A mine site will probably require an all-weather road
- Benefits to community
 - Greater access to interior
 - Aggregate resources
 - Possible Future Hydro Development
 - Future exploration access

- Education is Social Infrastructure that builds local capacity
- The best preparation for future mine work training is a strong K through 12 education system
- Skilled trades and national certifications require literacy and numeracy equivalent to Canadian provincial standards
- Mines can provide mine training but literacy and numeracy are required for successful training

“Schools are perhaps the most important of all services. In our modern society, those without education have no hope of sharing in the opportunities and benefits which Canada offers to its people.”

*-John Diefenbaker,
Northern Development Speech Notes 1963*

- If Peregrine is successful in developing the first diamond mine on Baffin Island, it would bring significant economic opportunity for people in this region including employment, increased opportunities for local businesses and benefits to the government from taxes and royalties.
- The economic viability of any project on the Hall Peninsula would be enhanced by improvements to both social and physical infrastructure.
- Peregrine looks forward to fully participating in future discussions on infrastructure development in Nunavut.



Thank you

