



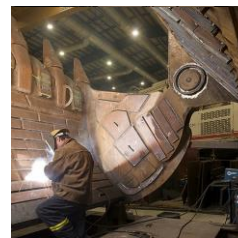
**AGNICO EAGLE**



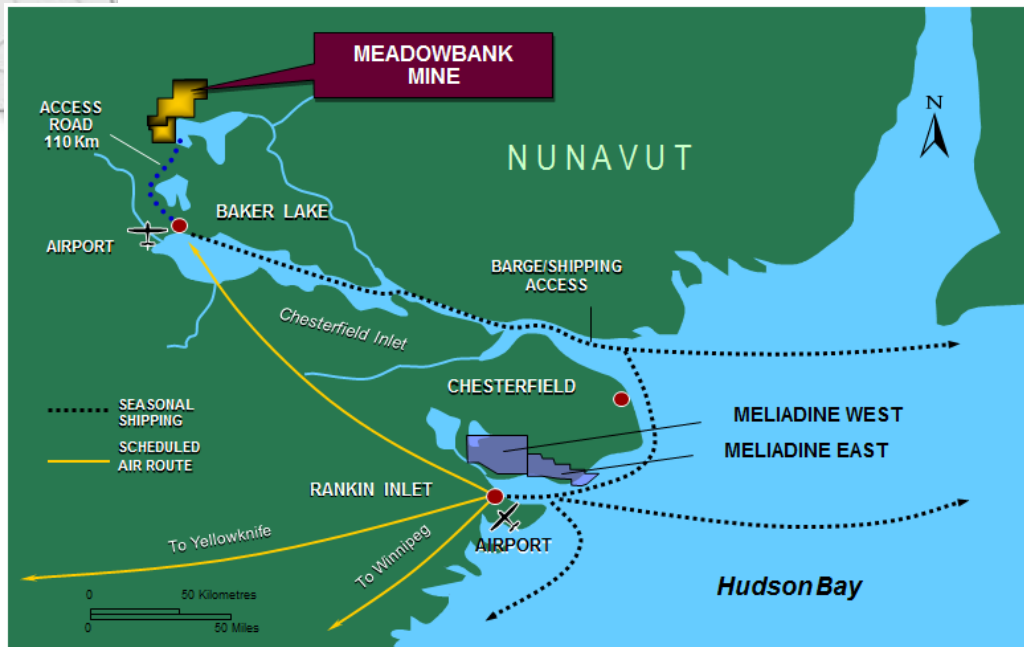
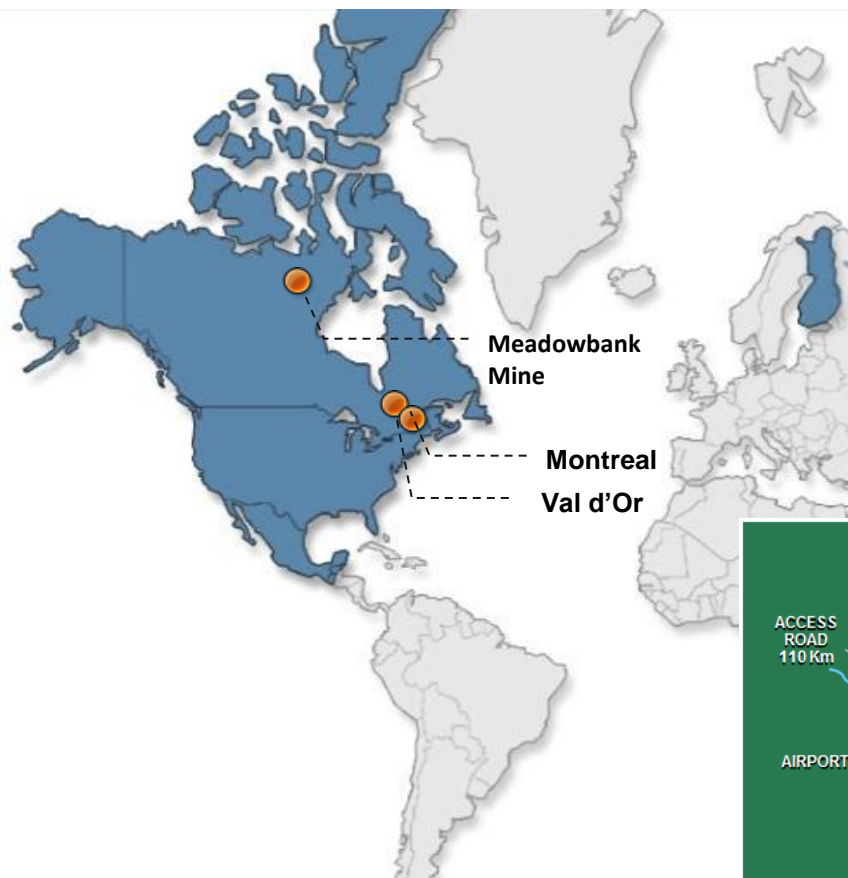
# MEADOWBANK

**Nunavut Mining  
Symposium**

**April 2014**



# MINE LOCATION



# MEADOWBANK SITE



# MINE



# MEADOWBANK OVERVIEW

- **AEM has invested over 1.5 Billion \$ to bring Meadowbank into production**
- **AEM is committed to develop in the North despite its inherent and numerous complexities**
  - Extreme weather conditions
  - Difficult and limited access
  - Complex logistics
  - A pristine environment to be protected

# CHALLENGES

# MANPOWER TRANSPORTATION

- 24,000 passengers transported in/out site per year
- 210 flights from South per year
- 52 flights from Kivalliq per year
- Employees come from all around Canada



# LOGISTICS BY SEA

- **Navigation season from July to October**
- **Ships are loaded in Becancour (Quebec)**
- **5 ships in 2013**
  - 2 barges to transfer cargo from ship to our Baker Lake facilities
  - 2,629 sea containers
  - 51,855 tonnes or 117,881 m<sup>3</sup>





# FUEL



- **In 2013, 76M liters of fuel delivered for Meadowbank**
- **Total fuel capacity on site**
  - Meadowbank 5.8M liters
  - Baker Lake 63.6M liters
- **Annual consumption 69M liters  
190,000/day**
- **+1,500 fuel trucks per year travel from Baker Lake to Meadowbank**

# ENERGY

## Nunavut Divisions (Fuel)

- Meadowbank 0.299 \$/kWh
- Meliadine 0.360 \$/kWh (estimated)

## Abitibi Divisions (Hydro)

- Goldex 0.045 \$/kWh
- Laronde 0.045 \$/kWh
- Lapa 0.053 \$/kWh



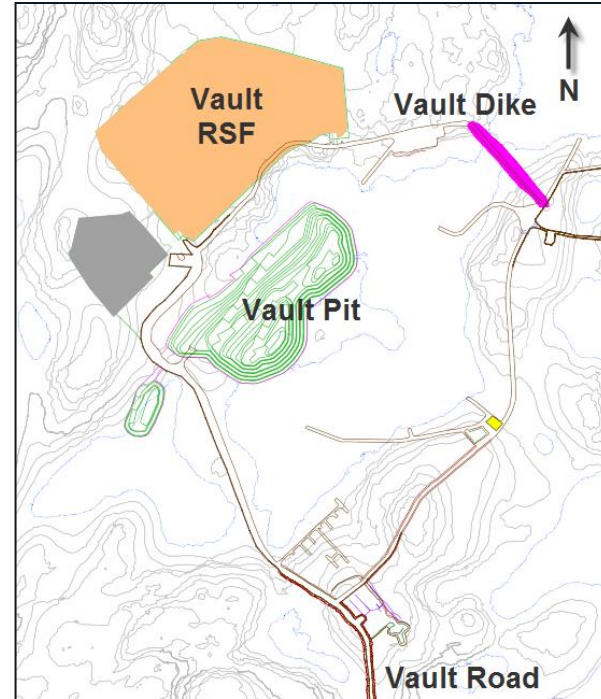
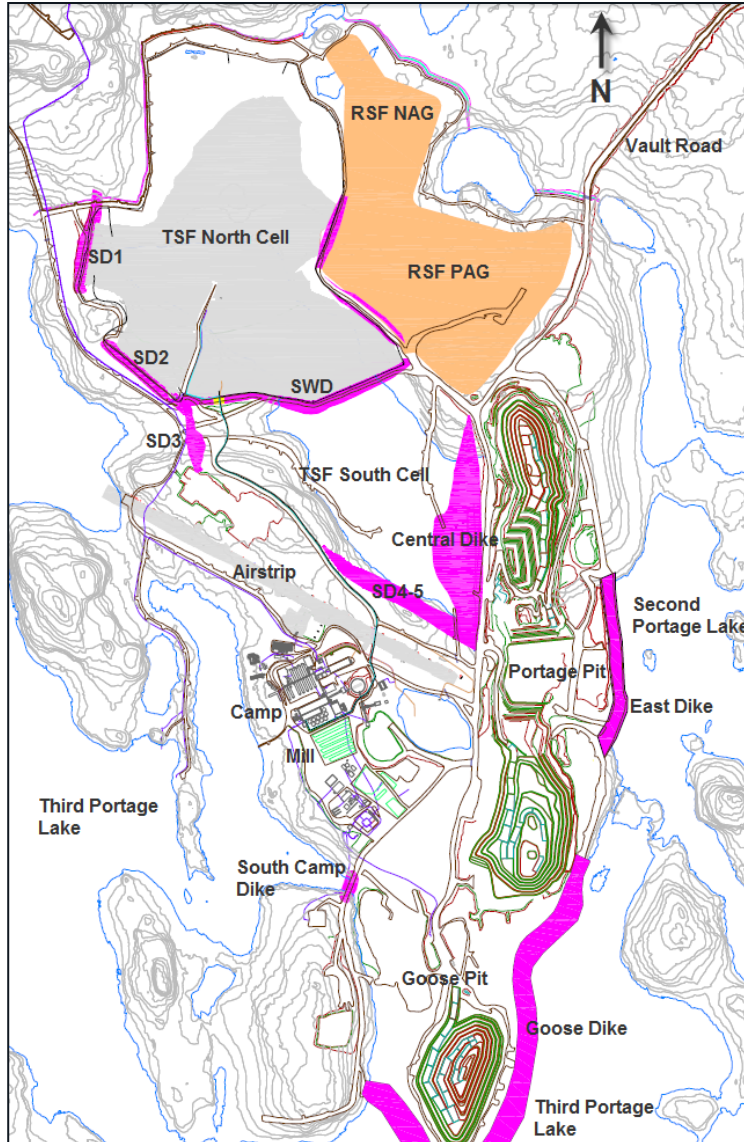
# BLIZZARDS



- **Blizzards and white outs represent health and safety risks for employees**
- **Mining activities and exterior work are suspended**
- **Represents over 700,000 tonnes of production loss per year**

Blizzard Hours	Jan	Feb	Mar	Apr	May	Jun	Jul	Aug	Sep	Oct	Nov	Dec	Total
<b>2011</b>	0	0	0	0	0	4	0	0	0	0	112	78	193
<b>2012</b>	0	31	36	0	6	0	0	0	0	0	27	39	137
<b>2013</b>	25	0	10	41	11	0	0	0	0	0	0	7	93
<b>2014</b>	51	105	9	N/A	N/A	N/A	N/A	N/A	N/A	N/A	N/A	N/A	164
<b>Mean</b>	19	34	14	14	5	1	0	0	0	0	46	41	147

# DIKES



# DIKES





# DIKES

- **In 2014 Central Dyke construction up to elevation 136.1**
- **The south cell construction will give us the present LOM for tailings capacity.**
- **If we increase our reserve enhancement of Central Dyke will be necessary in order to increase our ability to contain tailings.**

# MINING

# MINING

- **2 Open Pit (Portage and Goose) in operation in 2013**
- **3rd Open Pit (Vault) start in operation early 2014**
- **2013**
  - 871,707 meters drilled
  - 35,630,000 tonnes moved
  - 3,360,368 tonnes ore feeded to crusher
  - 11,212,632 kg explosives used





# 3 X RH120 FRONT SHOVEL





# 3 X 992 LOADERS





# 20 X HAUL TRUCKS (150 TONNES AND 100 TONNES)



# 5 X DOZERS



# 8 DRILLS



# MINING VIDEO

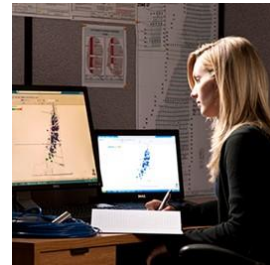


Portage Pushback E2 2013-07-30.mp4

# QUESTIONS



**AGNICO EAGLE**



**Trading Symbol:**  
AEM on TSX & NYSE

**Investor Relations:**  
416-847-8665  
[info@agnicoeagle.com](mailto:info@agnicoeagle.com)

**[agnicoeagle.com](http://agnicoeagle.com)**

