

# Community Development and Mining A Pond Inlet Perspective



# Past

- Focus on capacity development and training initiatives.
- Heavy Equipment Operators Class 3 with airbrakes Courses
- Drillers
- First Responders First Aid
- Work Ready Program
- Environmental Tech Program
- Polar Bear Monitor Training



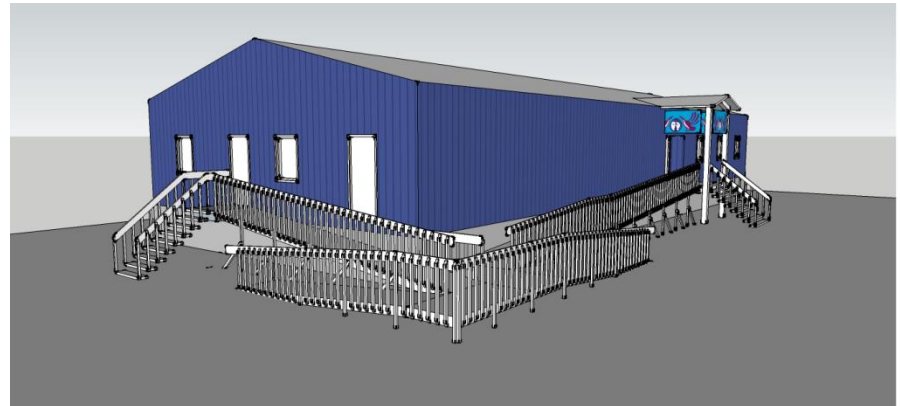
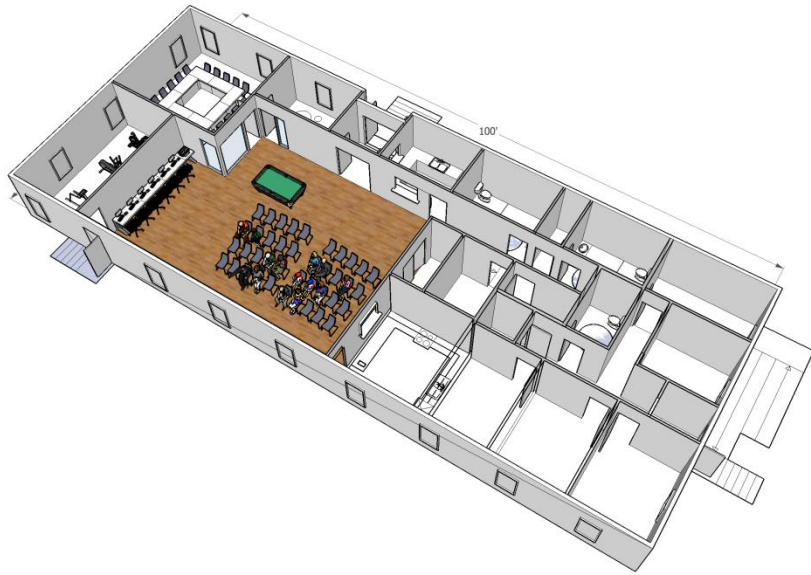
# Present

- Employment

- Some Pond Inlet Residents are moving up and gaining supervisory positions
- Over 30 employees from Pond Inlet representing approximately 3 Million in new dollars coming to the community.
- More employment opportunity now with mine growth wider range of positions available.
- Simulator Training in the community
- Companies in the community are patiently waiting for contracting opportunities. Waiting for regulatory approval

# Future – Thinking Big

- Proposals are being developed to renovate a building to assist with socio-economic impacts and help with business office space.
- High Arctic Heavy Equipment Training Facility.



# Business Development and Contracting

- Currently 14 venture business in Pond Inlet that would like to take advantage of opportunities.
- Communities in the North Baffin need to benefit from contracting opportunities



Thank you!

