

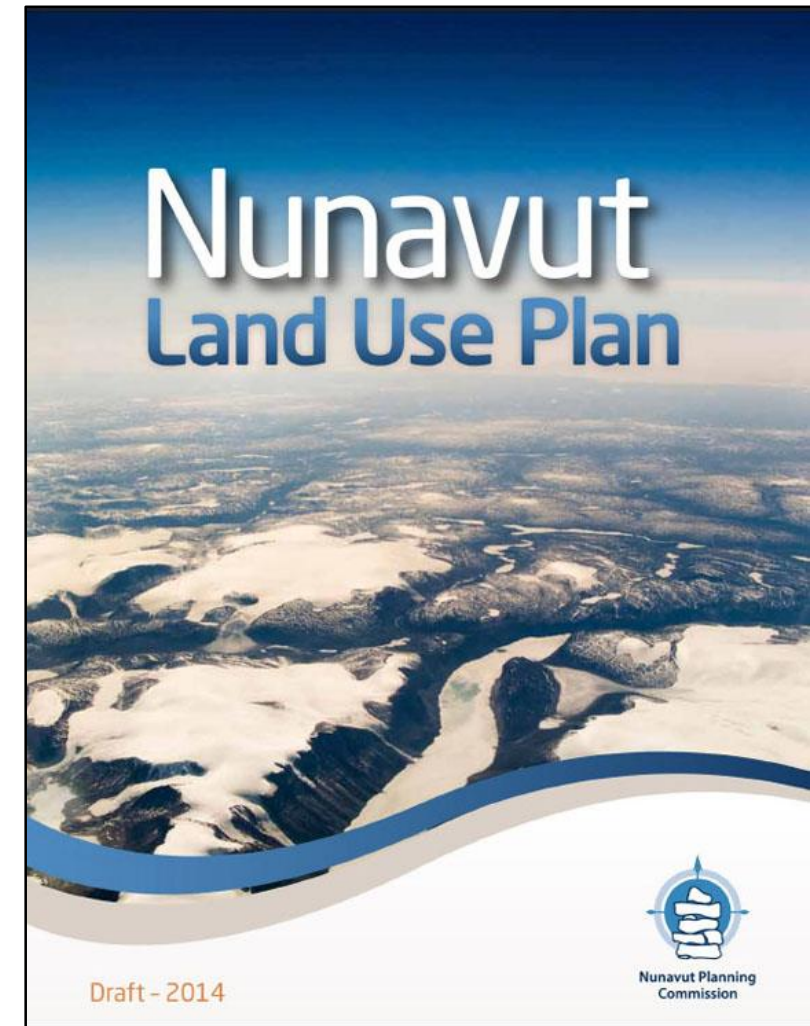


ᓄᓇᓂᓄᓂ ᓂᓄᓇᓂᓄᓂ
Nunavunmi Parnaiyiit
Nunavut Planning Commission
Commission d'Aménagement du Nunavut

Nunavut IPG's and New Legislation and Regulation

Land Use Planning in Nunavut

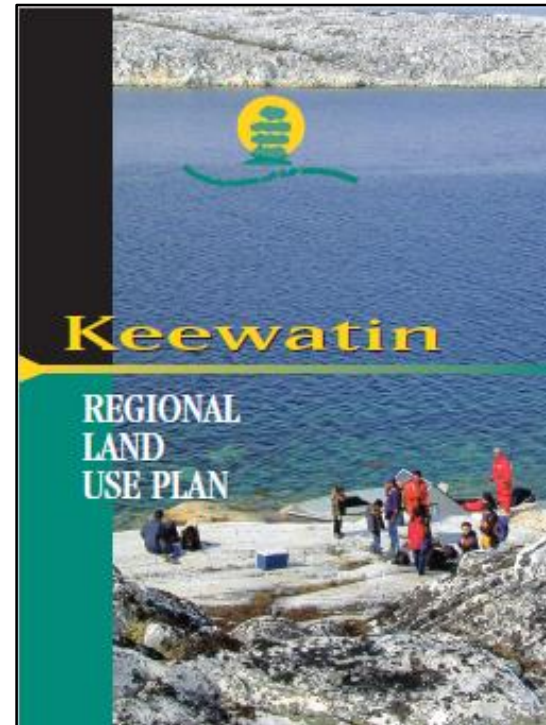
April 7, 2016





Regulatory System

- NPC is the gatekeeper of Nunavut's regulatory system
- Two approved regional land use plans in place:
 - North Baffin
 - Keewatin
- Proponents must submit a proposal to the NPC to determine conformity





Regulatory System

- NPC has 45 days to complete review of project proposals
 - Does the project proposal conform to the plan?
 - Does it require screening by NIRB?
 - If project conforms to plan, project proposal will be forwarded to NIRB or to the regulatory authorities identified

Public Registry - Search

Keywords

Reset

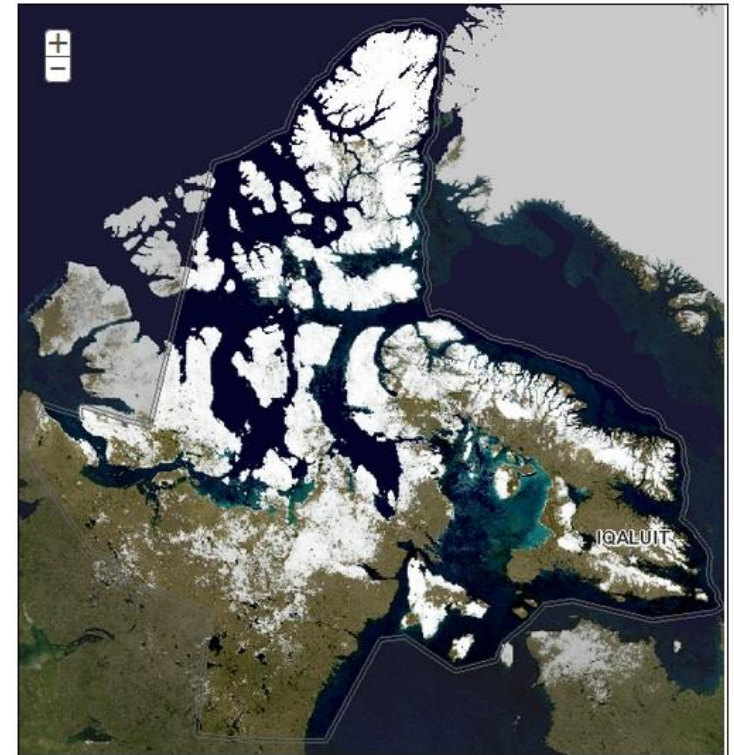
Find Projects

Advanced Search

Region

Time Frame

Land Use



Prev 1 Next

Display per page: 5



Online Applications & Registry

- Public registry
- Online application system for submission of project proposals

nunavut.ca

Public Registry - Search

Keywords

Reset

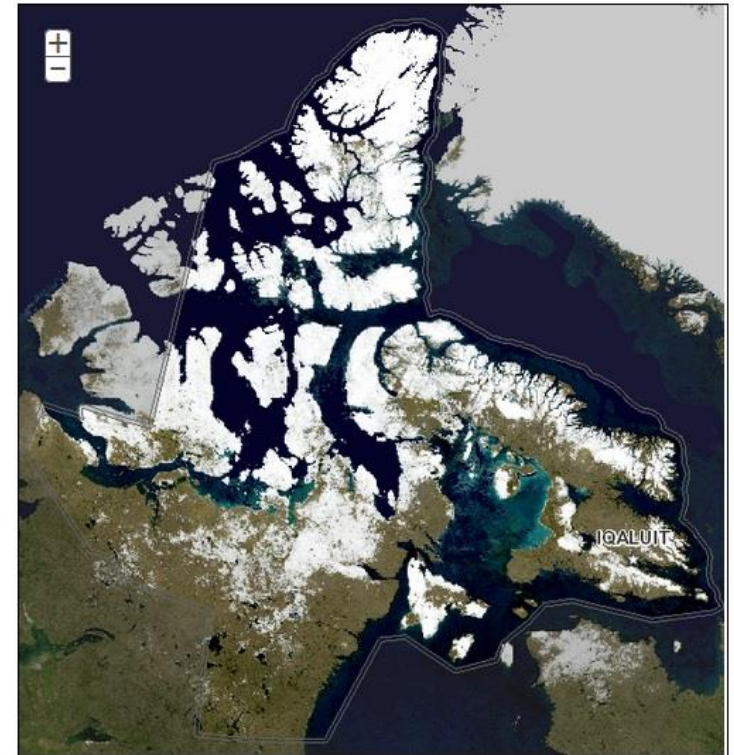
Find Projects

Advanced Search

Region

Time Frame

Land Use



Prev 1 Next

Display per page: 5



Internal Procedures

- Conformity determination
- Project Exemption
- Plan amendment
- Minor variance
- Periodic review
- Monitoring plan implementation
- Monitoring approved projects
- Information management

