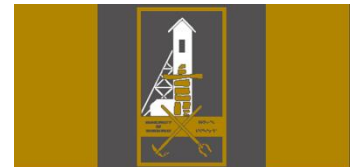


Presentation Outline

- Overview of Rankin Inlet
- Community Development
- Impacts - Agnico Eagle Mines



Overview

Rankin Inlet

Rankin Inlet – Nickel Mine

- Rankin Inlet was established as a result of the 'North Rankin Nickel Mine' in 1957
- As a result our community has a strong history and culture of mining
- Most of the original Miners of the Nickel mine along with their families still reside in the community



Rankin Inlet - Facts

- Hub of the Business and Transportation of the Kivalliq and Territory, connecting the North, South, East and West
- Population: 2,908 (Source: Nunavut Bureau of Statistics)
- Approx. 110 Registered Businesses



Rankin Inlet - Employment

- Municipality of Rankin Inlet
- Government of Nunavut
- M&T Enterprises / Sakku Investments
- Sarliaq Holdings
- Arctic Heating
- Agnico Eagle
- Eskimo Point Lumber Supply
- Kissarvik Co-op, Northwest Company & Kativik Ltd.
- Along with many small local businesses and organizations



Rankin Inlet – What we have to offer

- Strong Municipal Council and Staff
- Large potential for new businesses
- Strong existing workforce with a fast growing number of entrepreneurs
- Infrastructure – Cellphone Coverage, Cable, Internet, Utilidor with running water and sewage



Rankin Inlet – the Challenges

- Housing
- Skilled Workforce – The need for training
- Employee Retention
- Economic Infrastructure (Marine Facilities, Roads, Fuel Storage, Power Generation, Municipal Facilities)



Community Development

Rankin Inlet

Community Development

- Future expansion of the Airport
- Future expansion for fuel storage
- Kivalliq Regional Visitors Centre (2018)



Community Development

- Annual Kivalliq Trade Show
 - September 26th to 28th, 2016
 - 2015 – Approx. 200 registered delegates
 - Approx. 1,000 community members attended events



Community Development

- New Arena
 - Budget – \$25 Million
 - Proposed completion 2019
 - Land development stages starting summer 2016
 - Seating capacity 940
 - NHL ice/turf rink



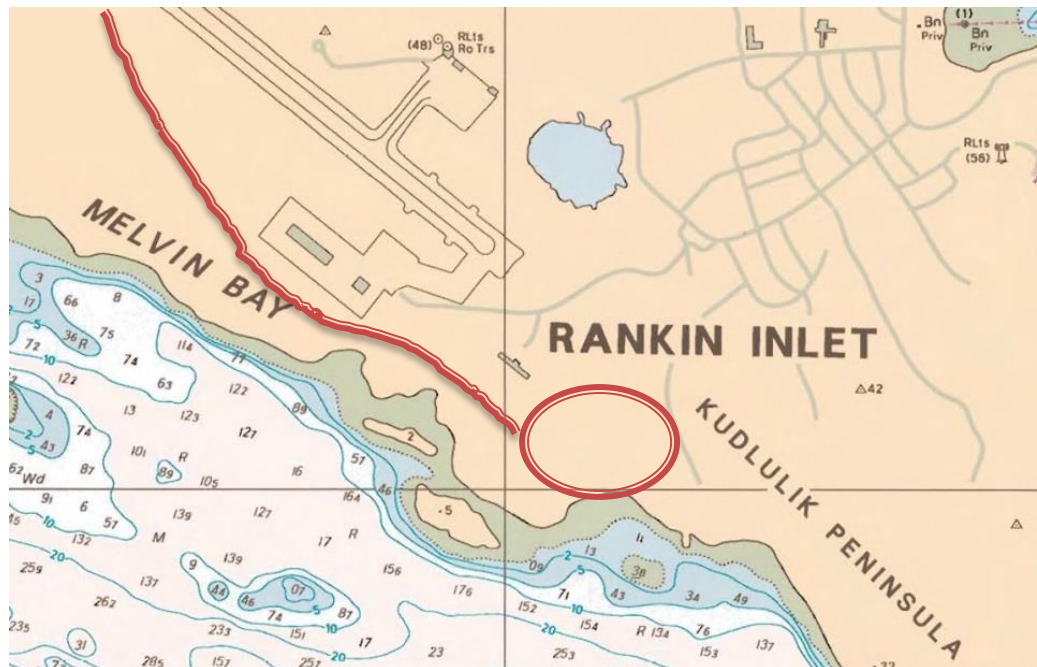
Community Development

- New Arena proposed location



Community Development

- Itivia Site
 - Staging area for sealift shipments
 - Road development



Community Development

■ Secondary Impacts

- Economic growth for community based groups
 - youth and adult sports, cultural, student / schools, daycare, food bank, Christmas hamper
- Community driven projects – soccer field, softball field, basketball court



Agnico Eagle Mines

Information provided by AEM

Agnico Eagle Mines - Impacts

■ Employment Stats

- Meadowbank – 31 Full-time / 11 Part-time
 - Over all Inuit payroll over \$20 Million
 - Over 40 thousand hours of Inuit training
 - Norman Eecherk – Welder
 - Nathaniel Kusugak – Road Side Mechanic
 - Georgina Pissuk – Aux Heavy Equipment Operator
 - Hannah Pilakapsi – Heavy Equipment Operator Instructor
 - 30% over all Inuit employees at Meadowbank
- Meliadine – 10 Full-time
 - Similar if not higher numbers expected when operating as a mine



NORMAN EECHERK



GEORGINA PISSUK



Agnico Eagle Mines - Impacts

- Contractors and Suppliers
 - Meliadine
 - Since 2010 - \$128 Million (Rankin Inlet based)
 - Meadowbank and Meliadine
 - Since 2007 - \$1.3 Billion (Nunavut based)
- A few Rankin Inlet Contractors and Suppliers
 - Huka Services
 - Sarliaq Holdings
 - Arctic Heating



Qujannamiik – Thank You

Municipality of Rankin Inlet



Kandace Kusugak
Community Economic Development Officer
cedo@rankininlet.ca
www.rankininlet.ca