

Building Our Region:

Developing Inuit Business in the Kitikmeot



John Main
Business Development Officer
Kitikmeot Inuit Association

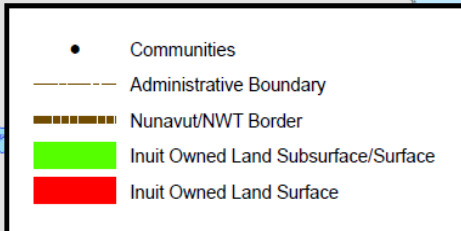
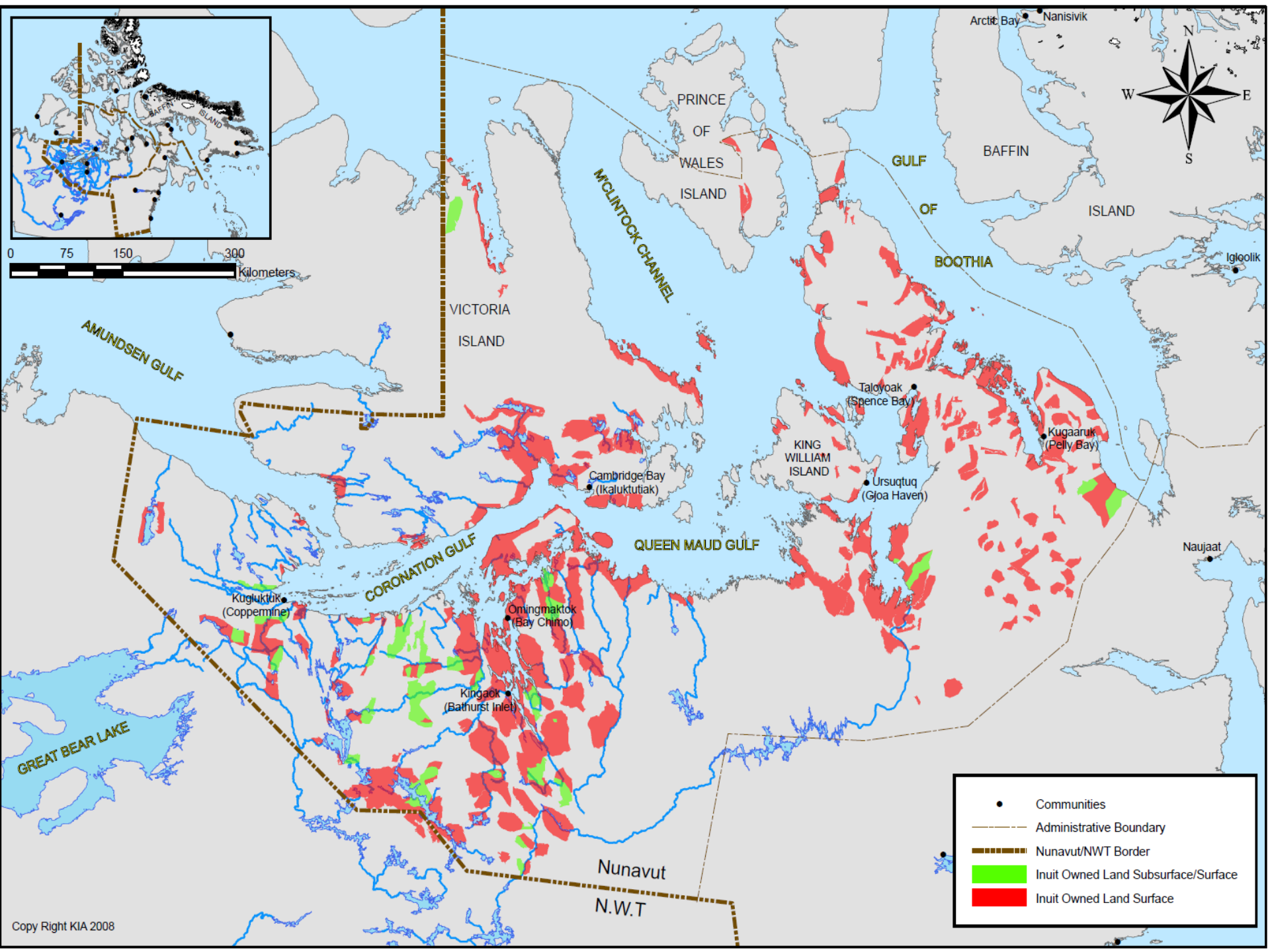
2014 Nunavut Mining Symposium

Outline

- ◆ **Kitikmeot & KIA**
- ◆ **Our Mining History**
 - ◆ **Current Activity**
- ◆ **Important Questions**

The Kitikmeot

- ◆ 5 Communities – West to East
- ◆ Total Population of Kitikmeot Region: 6,472
(2013, Nunavut Bureau of Statistics)
- ◆ Beneficiary Population – 5,554 Inuit
- ◆ Cambridge Bay is regional business hub
- ◆ Yellowknife is our southern connection
- ◆ Languages Spoken: English, Inuktitut, Inuinnaqtun



The KIA Mandate

*To represent the interests of Kitikmeot Inuit by
protecting and promoting our*

social,

cultural,

political,

environmental

and economic well-being.

Our Mining History

- ◆ **Kitikmeot has a mining history**
- ◆ **There have been gradual increases in benefits and opportunities for Inuit**
- ◆ **This evolution should continue as Nunavut develops and matures**

Roberts & Ida Bay



Noel Avadluk



Lupin





ECHO BAY MINES LTD.

LUPIN MINE

LATITUDE 65° 46'N
LONGITUDE 111° 15'W
ELEVATION 1585 FT.



Jericho





Hope Bay - Doris North





Current Activity

We have 4 Major projects in the region:

- ◆ **TMAC Resources – Hope Bay**
- ◆ **MinMetals Group– Izok Corridor**
- ◆ **Sabina Gold and Silver – Back River**
- ◆ **Glencore – Hackett River**

Current Activity in the Kitikmeot



The Numbers

◆ \$20.5 MILLION

- ◆ 2013 CONTRACTS WITH INUIT-OWNED FIRMS

◆ \$25.3 MILLION

- ◆ 2013 CONTRACTS WITH INUIT-OWNED AND 'NORTHERN' FIRMS



Employment

◆ **\$ 2.64 MILLION**

◆ 2013 Payroll to Inuit Employees

◆ **70 FULL-TIME JOBS**

◆ Assuming
\$38,000/position



Some Kitikmeot Inuit Firms

- ◆ **Qillaq Innovations** – Expediting, Camps, Aviation
- ◆ **Kikiak Contracting** – Expediting, Reclamation
- ◆ **1984 Nunavut** – Catering, Safety
- ◆ **Aqsaqniq Ltd.** – Aviation JV
- ◆ **Kitikmeot Corporation** – KitNuna, Other Subsidiaries

Opportunities

Services – Supplies – Labour

- ◆ Aviation, Expediting, Catering, Site Services
- ◆ Construction, Earth Works
- ◆ Drilling / Drilling Supply, Blasting
- ◆ Environmental, Security, Engineering
- ◆ Marine Transport, Bulk Fuel, Overland Transport

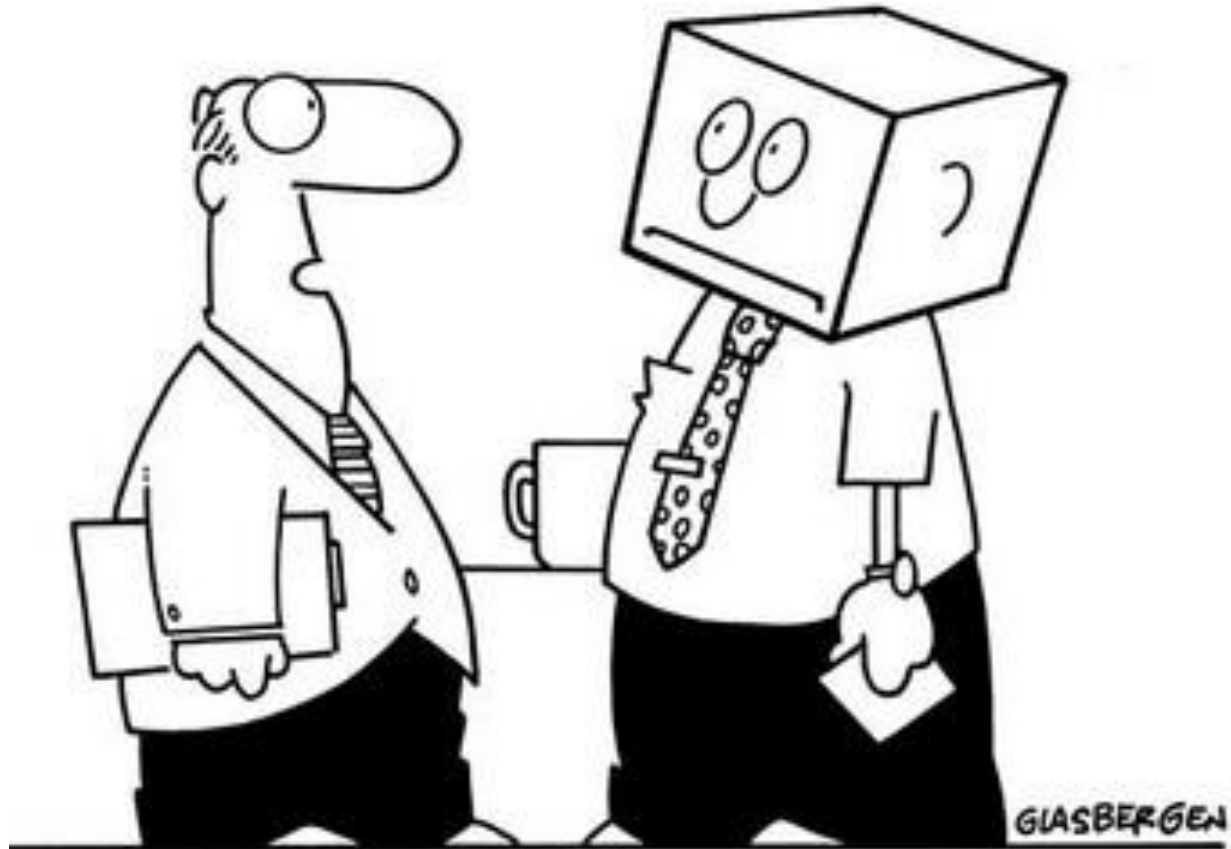
Our Challenges

- ◆ **Geography**
- ◆ **Competitiveness**
- ◆ **Boom and Bust Cycles**
- ◆ **Capacity:**

Entrepreneurs, Workforce, Capital



Copyright 2005 by Randy Glasbergen. www.glasbergen.com



**“Thinking outside of the box is difficult
for some people. Keep trying.”**

Closing Questions

- ◆ **Will Inuit be able to maximize business revenue from development?**
- ◆ **How can we help industry clusters develop?**
- ◆ **How can we build our capacity – business owners; employees; tradespersons; and financial capital?**
- ◆ **What role fits best for Regional Development Corporations?**

Koana, Matna Qujannamiik



John Main
Kitikmeot Inuit Association
Cambridge Bay, NU
867 983 2458
kiabdo@qiniq.com