

# AN UPDATE: NIRB'S MAJOR PROJECT ASSESSMENTS & OVERVIEW OF PROCESS STEPS

ᐅᓂᐅᓂᓂ ᓂᐅᓂᓂ: ᐅᓂᓂᓂᓂᓂᓂ  
ᐅᓂᓂᓂᓂ ᐅᓂᓂᓂᓂᓂ  
ᓂᓂᓂᓂᓂᓂᓂᓂ ᐅᓂᓂᓂᓂᓂᓂᓂᓂ  
ᓂᓂᓂᓂᓂᓂᓂᓂᓂᓂᓂᓂᓂᓂ

Nunavut Mining Symposium  
Iqaluit, April 2014

ᓂᓂᓂᓂᓂᓂᓂᓂᓂᓂᓂᓂᓂᓂᓂ  
ᐅᓂᓂᓂᓂᓂᓂᓂᓂᓂᓂᓂᓂᓂᓂᓂ  
ᐅᓂᓂᓂᓂᓂᓂᓂᓂᓂᓂᓂᓂᓂᓂᓂ  
ᐅᓂᓂᓂᓂᓂᓂᓂᓂᓂᓂᓂᓂᓂᓂᓂ  
ᐅᓂᓂᓂᓂᓂᓂᓂᓂᓂᓂᓂᓂᓂᓂᓂ





# What is the Nunavut Impact Review Board? ᑭᓄᓐᓇ ᐱᓚᐁᓕᓂᓄᓐᓇᑦ?

An institution of public government responsible for environmental impact assessment of proposed projects in Nunavut

*Mission: To protect and promote the well being of the environment and Nunavummiut through the impact assessment process*

ᓄᓇᓚᓐᓇ ᐱᓚᐁᓕᓂᓄᓐᓇᑦ ᑲᐁᓂᓄᓐᓇᑦ ᐁᓂᓄᓐᓇᑦᐁᓂᓄᓐᓇᑦ ᓄᓇᓚᓐᓇᑦ ᐱᓚᐁᓕᓂᓄᓐᓇᑦ ᓄᓇᓚᓐᓇᑦ ᐱᓚᐁᓕᓂᓄᓐᓇᑦ ᓄᓇᓚᓐᓇᑦ ᐱᓚᐁᓕᓂᓄᓐᓇᑦ ᓄᓇᓚᓐᓇᑦ ᐱᓚᐁᓕᓂᓄᓐᓇᑦ ᓄᓇᓚᓐᓇᑦ ᐱᓚᐁᓕᓂᓄᓐᓇᑦ ᓄᓇᓚᓐᓇᑦ

ᓄᓇᓚᓐᓇᑦ: ᐱᓚᐁᓕᓂᓄᓐᓇᑦ ᓄᓇᓚᓐᓇᑦ ᓄᓇᓚᓐᓇᑦ ᓄᓇᓚᓐᓇᑦ ᓄᓇᓚᓐᓇᑦ ᓄᓇᓚᓐᓇᑦ ᓄᓇᓚᓐᓇᑦ ᓄᓇᓚᓐᓇᑦ ᓄᓇᓚᓐᓇᑦ ᓄᓇᓚᓐᓇᑦ ᓄᓇᓚᓐᓇᑦ ᓄᓇᓚᓐᓇᑦ



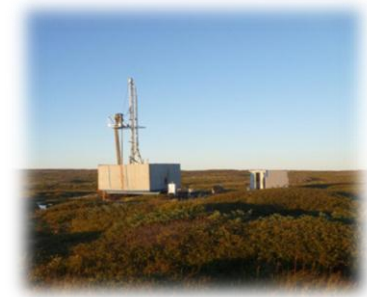




# Types of Project Proposals assessed

## ᓆᓂᓄᓐᓇᓂᓐᓃᓐ ᓄᓐᓇᓂᓐᓃᓐ ᓆᓂᓇᓂᓐᓃᓐ ᓆᓂᓇᓂᓐᓃᓐ ᓆᓂᓇᓂᓐᓃᓐ

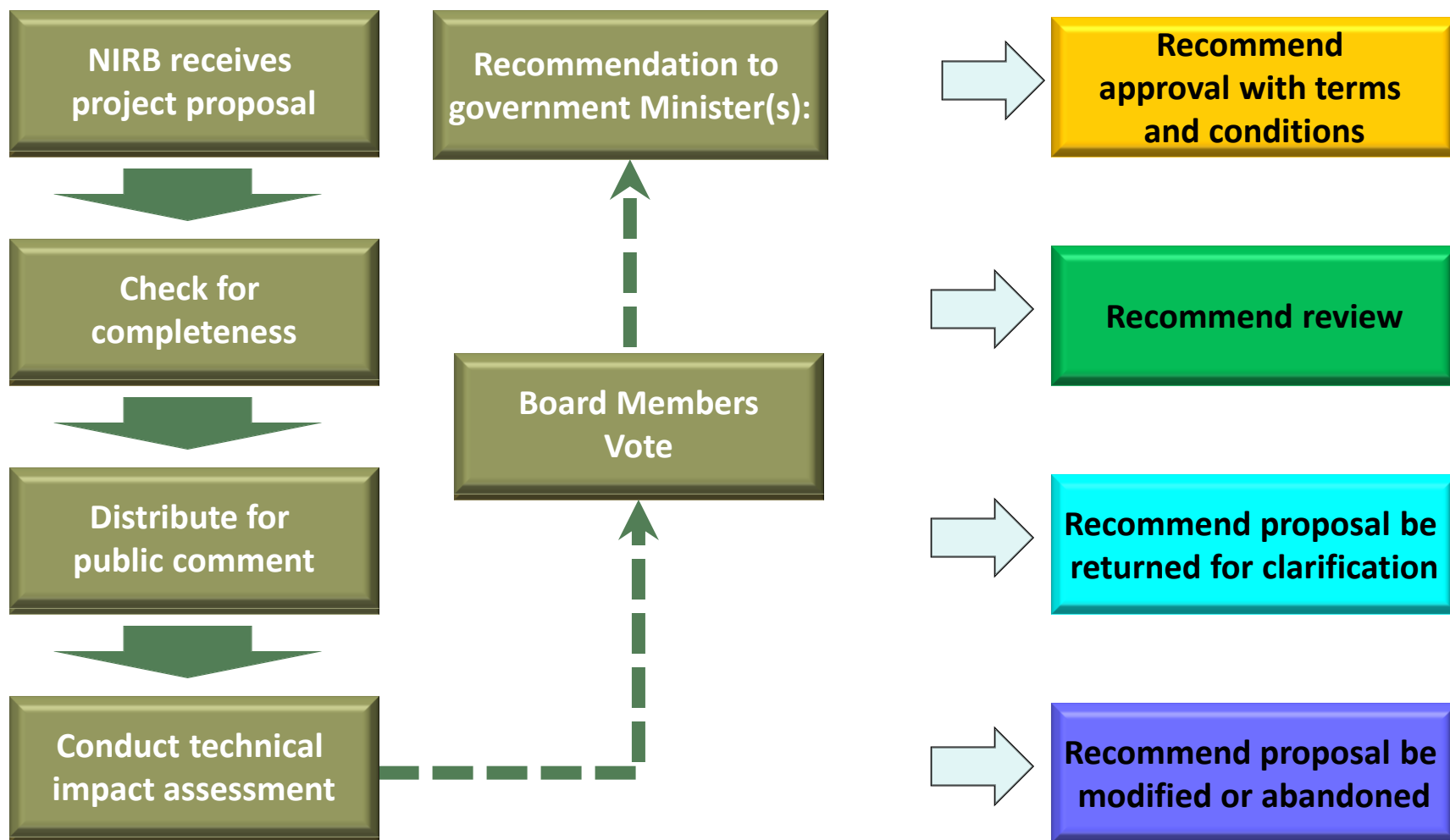
- Research ᓆᓂᓇᓂᓐᓃᓐ ᓆᓂᓇᓂᓐᓃᓐ
- Roads / trails ᓄᓐᓇᓂᓐᓃᓐ / ᓄᓐᓇᓂᓐᓃᓐ ᓆᓂᓇᓂᓐᓃᓐ
- Marine infrastructure ᓄᓐᓇᓂᓐᓃᓐ ᓄᓐᓇᓂᓐᓃᓐ
- Seismic activity ᓄᓐᓇᓂᓐᓃᓐ ᓄᓐᓇᓂᓐᓃᓐ ᓆᓂᓇᓂᓐᓃᓐ
- Site Remediation ᓄᓐᓇᓂᓐᓃᓐ ᓄᓐᓇᓂᓐᓃᓐ ᓆᓂᓇᓂᓐᓃᓐ
- Oil & Gas ᓄᓐᓇᓂᓐᓃᓐ ᓄᓐᓇᓂᓐᓃᓐ ᓆᓂᓇᓂᓐᓃᓐ
- Exploration ᓄᓐᓇᓂᓐᓃᓐ ᓄᓐᓇᓂᓐᓃᓐ ᓆᓂᓇᓂᓐᓃᓐ
- Mining developments ᓄᓐᓇᓂᓐᓃᓐ ᓄᓐᓇᓂᓐᓃᓐ ᓆᓂᓇᓂᓐᓃᓐ ᓄᓐᓇᓂᓐᓃᓐ





# The Screening Process

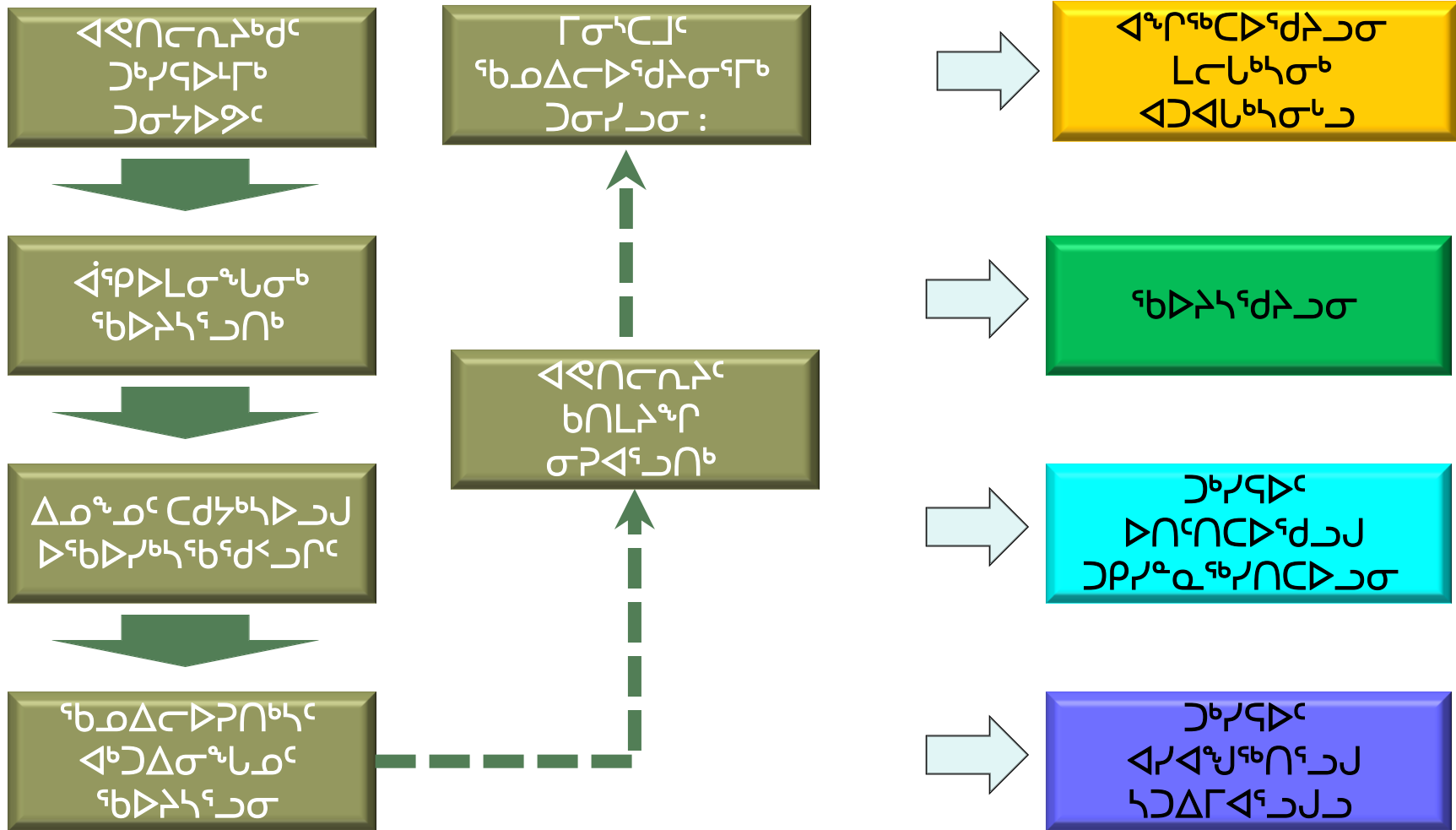
Jan - Apr 2014: 41  
Applications for  
Screening





# ᑦᑲᐅᐱᓐᓄᑦ

ᐱᓄᐱᓐ - ᐳᐱᐱᓐ 2014:  
 41 ᑲᓄᑦᐳᐱᓐ  
 ᑦᑲᐅᐱᓐᑲᐱᓐᐱᓐᓄᑦ





# Major Project Assessments by Region

ᐃᓄᓯᐸᓂᑦ ᐱᐸᓂᐸᓂᑦ ᑦᑎᐸᓂᑦ  
ᐸᐸᓂᑦᑲᓂᑦ



**Kitikmeot**  
5 Review  
2 Monitoring

ᑦᑲᓂᑦᑲᓂᑦ  
5 ᑦᑎᐸᓂᑦᑲᓂᑦ  
2 ᐃᓄᓯᐸᓂᑦ  
ᑦᑎᐸᓂᑦᑲᓂᑦ

**Qikiqtani**  
1 Review  
1 Monitoring

ᑦᑲᓂᑦᑲᓂᑦ  
1 ᑦᑎᐸᓂᑦᑲᓂᑦ  
1 ᐃᓄᓯᐸᓂᑦ  
ᑦᑎᐸᓂᑦᑲᓂᑦ

**Kivalliq**  
3 Review  
1 Monitoring

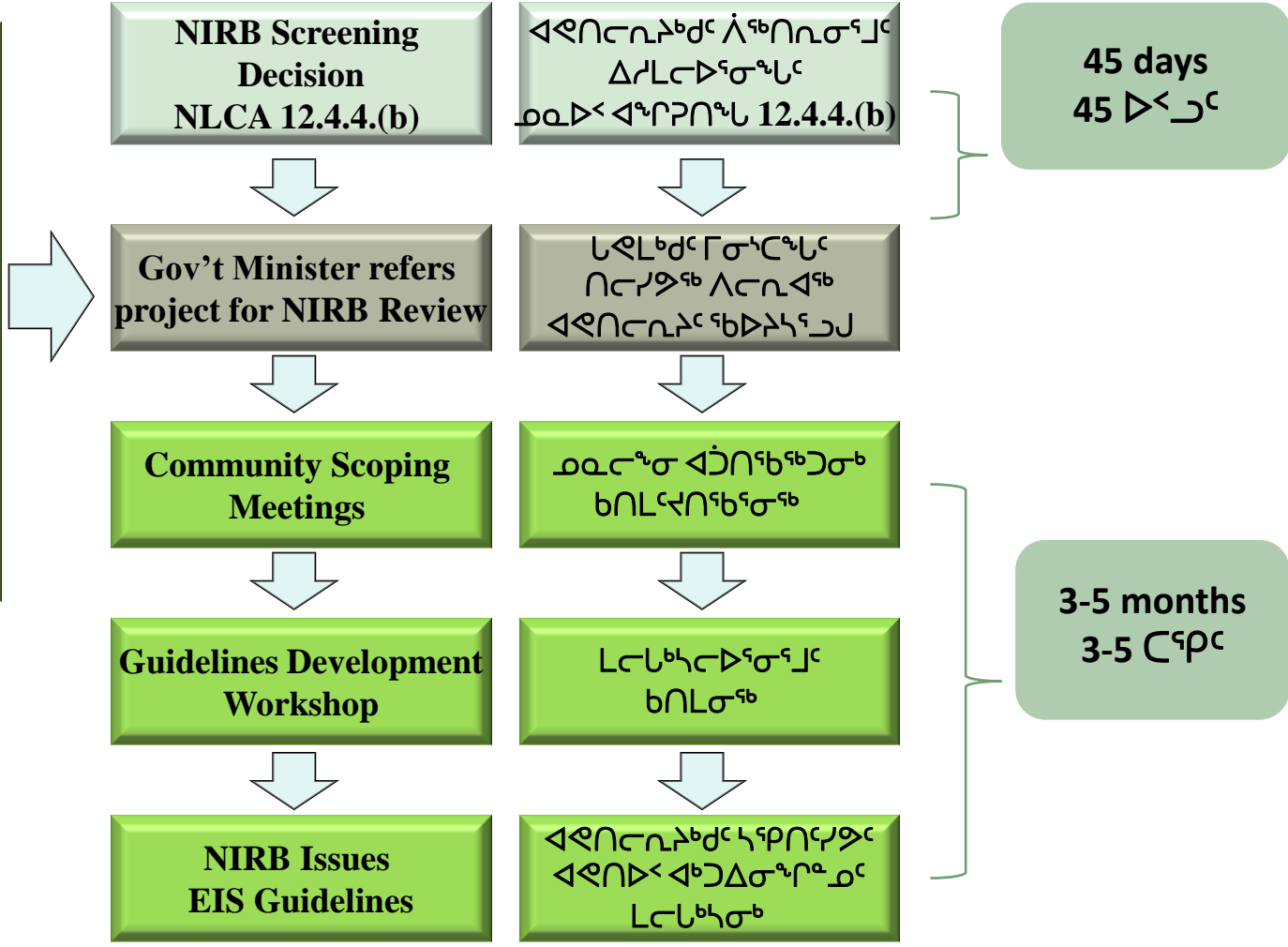
ᑲᓂᑦᑲᓂᑦ  
3 ᑦᑎᐸᓂᑦᑲᓂᑦ  
1 ᐃᓄᓯᐸᓂᑦ  
ᑦᑎᐸᓂᑦᑲᓂᑦ



# Review Process: PHASE 1

## ᓄᓇᓂᓄᓐ ᓄᓇᓂᓄᓐ: ᓄᓇᓂᓄᓐ 1

**ᓄᓇᓂᓄᓐ 1:**  
 ᓄᓇᓂᓄᓐ ᓄᓇᓂᓄᓐ ᓄᓇᓂᓄᓐ  
 ᓄᓇᓂᓄᓐ ᓄᓇᓂᓄᓐ ᓄᓇᓂᓄᓐ  
 ᓄᓇᓂᓄᓐ ᓄᓇᓂᓄᓐ ᓄᓇᓂᓄᓐ  
**PHASE 1:**  
*Issue Scoping  
 EIS Guideline Development*





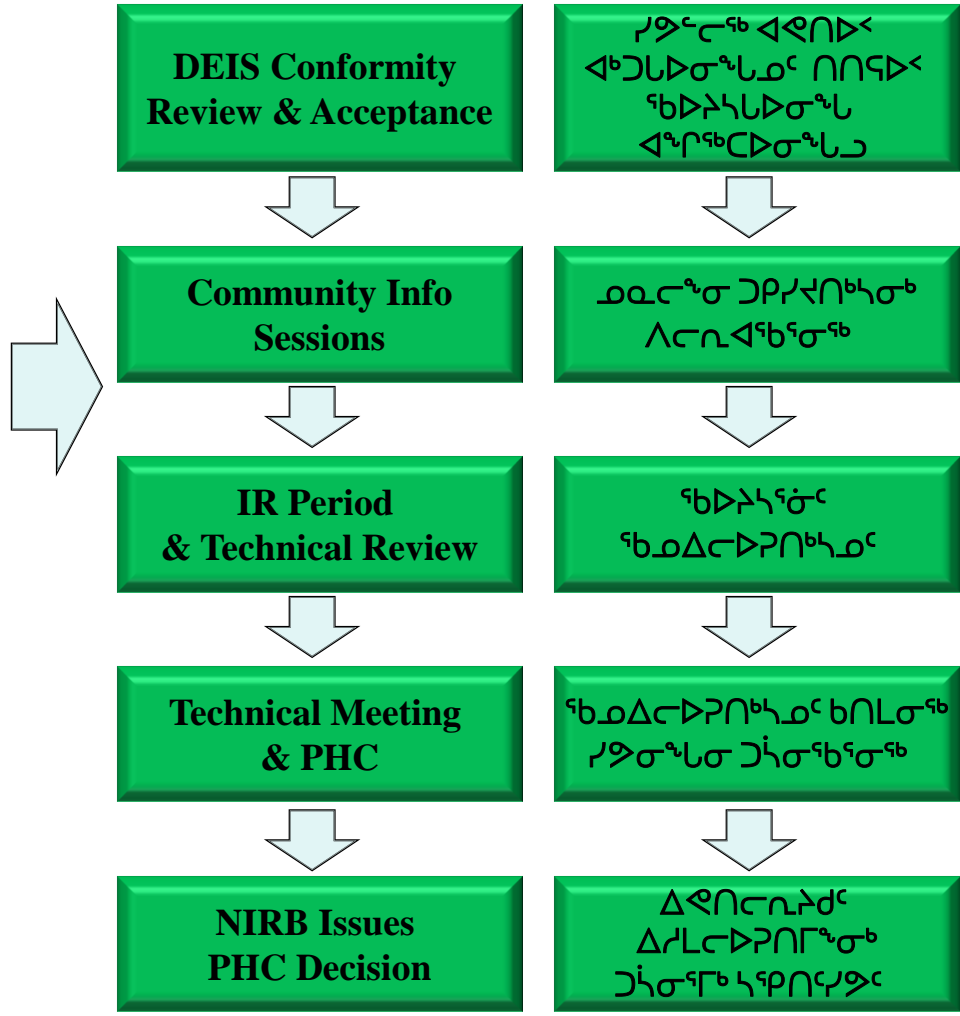


# Review Process: PHASE 2

## ᖃᑲᑲᑦᑲᑦᑲᑦ: ᐱᑕᑎᐱᑦᑲ 2

ᐱᑕᑎᐱᑦᑲ 2:  
 ᖃᑲᑲᑦᑲᑦᑲᑦᑲᑦ  
 ᐱᑕᑎᐱᑦᑲᑲᑦ  
 ᑲᑲᑲᑦᑲᑦᑲᑦᑲᑦ  
 ᖃᑲᑲᑦᑲᑦᑲᑦᑲᑦ  
 ᖃᑲᑲᑦᑲᑦᑲᑦᑲᑦ

**PHASE 2:**  
*Draft EIS  
 Technical Review*



15 days 15 ᑲᑲᑲᑦ

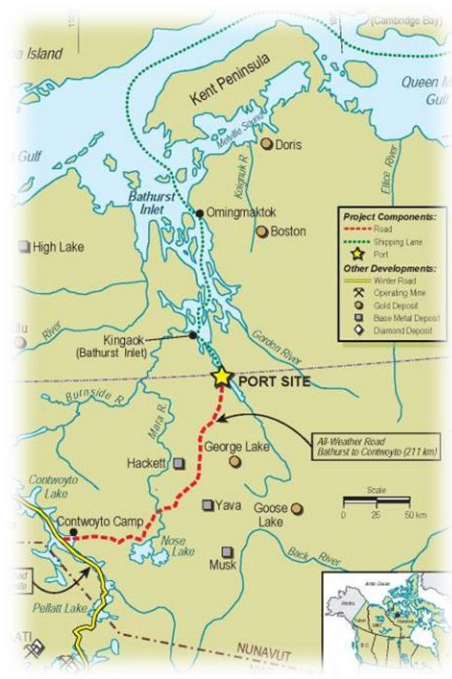
4-5 months  
 4-5 ᑕᑲᑲᑦ  
 +  
 Proponent IR Response Time  
 ᐱᑕᑎᐱᑦᑲᑲᑦ  
 ᑲᑲᑲᑦᑲᑦᑲᑦ

# Suspended Assessments

## ወገን ገቢ ለገቢ ለገቢ ለገቢ ለገቢ ለገቢ

### Bathurst Inlet Port & Road ገቢ ለገቢ ለገቢ ለገቢ ለገቢ

<b>Review Phase</b> ገቢ ለገቢ ለገቢ ለገቢ ለገቢ	<b>2 – Commenced 2004, Suspended 2008, Re-engaged 2011</b> 2 – ለገቢ ለገቢ ለገቢ 2004, ወገን ለገቢ ለገቢ 2008, ለገቢ ለገቢ ለገቢ 2011
<b>Proponent</b> ገቢ ለገቢ ለገቢ ለገቢ ለገቢ	<b>Glencore &amp; Sabina</b>



### Hackett River ዘገቢ ገቢ ለገቢ ለገቢ ለገቢ ለገቢ

### Phase 2 Hope Bay Belt ገቢ ለገቢ ለገቢ ለገቢ ለገቢ

<b>Review Phase</b> ገቢ ለገቢ ለገቢ ለገቢ ለገቢ	<b>2 – Commenced 2012, Suspended 2012</b> 2 – ለገቢ ለገቢ ለገቢ ለገቢ ለገቢ 2012, ወገን ለገቢ ለገቢ ለገቢ 2012
<b>Proponent</b> ገቢ ለገቢ ለገቢ ለገቢ ለገቢ	<b>TMAC Resources Inc.</b>

<b>Review Phase</b> ገቢ ለገቢ ለገቢ ለገቢ ለገቢ	<b>2 – Commenced 2008, Suspended 2009</b> 2 – ለገቢ ለገቢ ለገቢ ለገቢ ለገቢ 2008, ወገን ለገቢ ለገቢ ለገቢ 2009
<b>Proponent</b> ገቢ ለገቢ ለገቢ ለገቢ ለገቢ	<b>Glencore Canada</b>

# Suspended Assessments

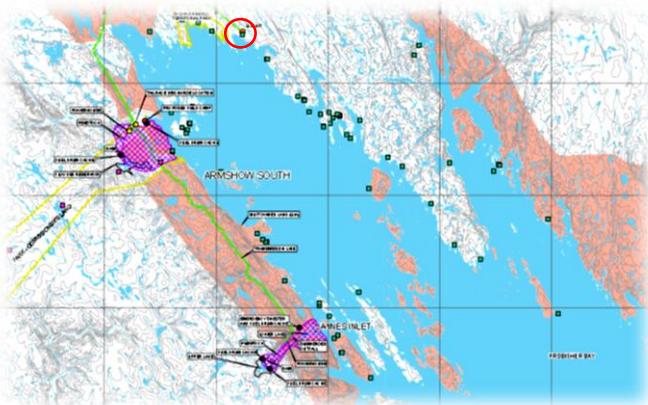
## ᐅᐱᓂᓂ ᐱᐅᐅᓂᐱᐱᓂᓂᐱ ᐅᓂᐱᓂᓂᐱ

### Garry Lake Uranium Exploration ᐱᐅᐅᓂᐱᐱᓂᓂᐱ ᐅᓂᐱᓂᓂᐱ ᐱᐅᐅᓂᐱᐱᓂᓂᐱ

<b>Review Phase</b> ᐅᓂᐱᓂᓂᐱ ᐱᐅᐅᓂᐱᐱᓂᓂᐱ ᐱᐅᐅᓂᐱᐱᓂᓂᐱ	<b>2 – Commenced 2008, Suspended 2010</b>
<b>Region</b> ᐱᐅᐅᓂᐱᐱᓂᓂᐱ	<b>Kivalliq ᐱᐅᐅᓂᐱᐱᓂᓂᐱ</b>
<b>Proponent</b> ᐱᐅᐅᓂᐱᐱᓂᓂᐱ	<b>Uravan Minerals Inc. ᐱᐅᐅᓂᐱᐱᓂᓂᐱ</b>



### Iqaluit Hydroelectric ᐱᐅᐅᓂᐱᐱᓂᓂᐱ ᐅᓂᐱᓂᓂᐱ ᐱᐅᐅᓂᐱᐱᓂᓂᐱ



<b>Review Phase</b> ᐅᓂᐱᓂᓂᐱ ᐱᐅᐅᓂᐱᐱᓂᓂᐱ ᐱᐅᐅᓂᐱᐱᓂᓂᐱ	<b>2 – Commenced 2013, Suspended 2 – ᐱᐅᐅᓂᐱᐱᓂᓂᐱ 2013, ᐅᓂᐱᓂᓂᐱ ᐱᐅᐅᓂᐱᐱᓂᓂᐱ 2013</b>
<b>Region</b> ᐱᐅᐅᓂᐱᐱᓂᓂᐱ	<b>Qikiqtani ᐱᐅᐅᓂᐱᐱᓂᓂᐱ</b>
<b>Proponent</b> ᐱᐅᐅᓂᐱᐱᓂᓂᐱ	<b>Qulliq Energy Corp. ᐱᐅᐅᓂᐱᐱᓂᓂᐱ ᐱᐅᐅᓂᐱᐱᓂᓂᐱ</b>

# Back River) <b> </b> </h1>

<b>Review Phase</b> ፍፅረኛ ምርመራ ዓመታት	<b>2 – Commenced 2012</b> 2 – ለገጠራ ምርመራ 2012
<b>Region</b> ልጠቅላይ ምክርቤት	<b>Kitikmeot</b> ፍጥጥ ምክርቤት
<b>Present Stage</b> ፲፱ ፍፅረኛ ምርመራ	<b>Technical review DEIS</b> ፍፅረኛ ምርመራ ለፍፅረኛ ምርመራ ለገጠራ ምርመራ
<b>Proponent</b> ደግሞ ምርመራ ፍፅረኛ	<b>Sabina Gold &amp; Silver Corp.</b> ካሎሪ ስታቪን ምርመራ ፍፅረኛ

- Proposed gold mining and milling
- ስታቪን ምርመራ ለፍፅረኛ ምርመራ ለገጠራ ምርመራ
- NIRB-NWB coordination
- ለፍፅረኛ ምርመራ ለገጠራ ምርመራ ለፍፅረኛ ምርመራ
- Consideration of activities to be excepted from Review
- ለፍፅረኛ ምርመራ ለገጠራ ምርመራ ለፍፅረኛ ምርመራ
- Technical comments, meeting of experts, Pre-Hearing Conference
- ፍፅረኛ ምርመራ ለገጠራ ምርመራ ለፍፅረኛ ምርመራ ለገጠራ ምርመራ



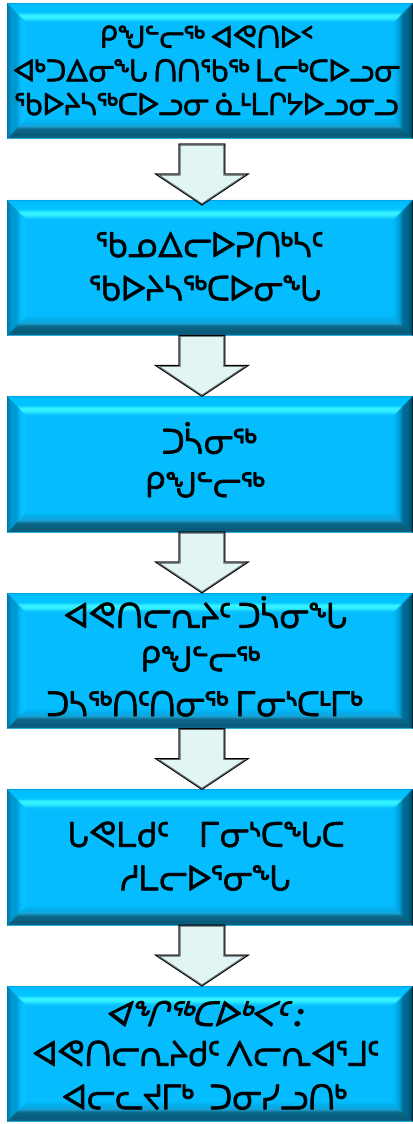
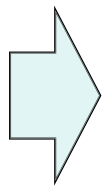


# Review Process: PHASE 3

## ᑭᑭᑦᑲᑦᑲᑦᑲᑦ: ᐱᑕᑎᐱᑦᑲ 3

ᐱᑕᑎᐱᑦᑲ 3:  
 ᑭᑭᑦᑲᑦᑲᑦᑲᑦ ᐱᑕᑎᐱᑦᑲ  
 ᐱᑕᑎᐱᑦᑲ ᐱᑕᑎᐱᑦᑲ  
 ᐱᑕᑎᐱᑦᑲ ᐱᑕᑎᐱᑦᑲ  
 ᐱᑕᑎᐱᑦᑲ ᐱᑕᑎᐱᑦᑲ

**PHASE 3:**  
*Final EIS  
 Technical Review*

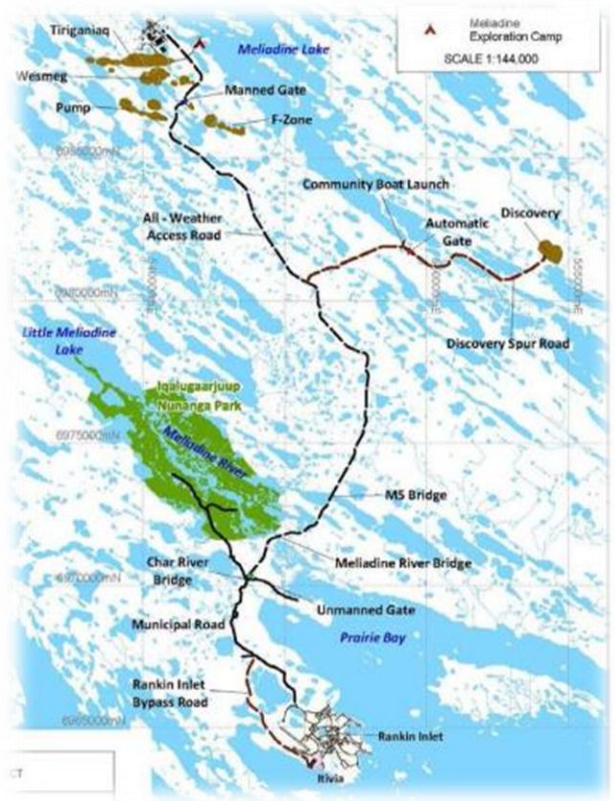


15 days  
 15 ᐅᑦᑲᑦ

4-5 months  
 4-5 ᑕᑦᑲᑦ



# Meliadine Gold Mine ᑕᑦᑲᑦᑲᑦᑲᑦ ᑭᑦᑲᑦᑲᑦᑲᑦ



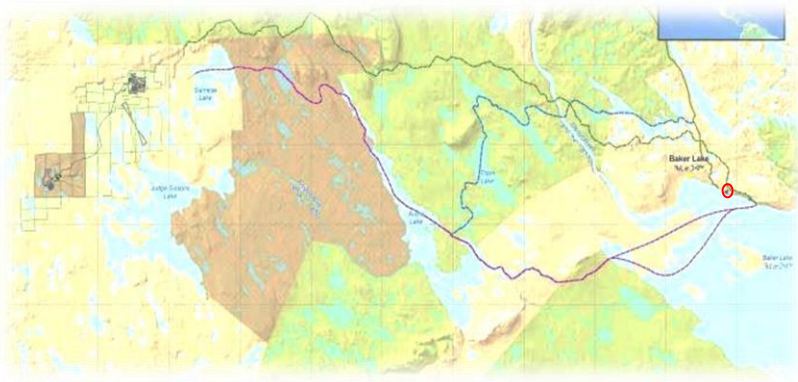
<b>Review Phase</b> ᑦᑲᑲᑦᑲᑦᑲᑦᑲᑦ ᑕ ᑲᑲᑦᑲᑦᑲᑦᑲᑦ	<b>3 – Commenced 2013 –</b> ᑲᑦᑲᑦᑲᑦᑲᑦᑲᑦᑲᑦ 2011
<b>Region</b> ᑲᑲᑦᑲᑦᑲᑦᑲᑦ	<b>Kivalliq ᑲᑲᑦᑲᑦᑲᑦᑲᑦ</b>
<b>Present Stage</b> ᑲᑲᑦᑲᑦᑲᑦᑲᑦ	<b>Await Submission of FEIS</b> ᑲᑲᑦᑲᑦᑲᑦᑲᑦᑲᑦ ᑲᑲᑦᑲᑦᑲᑦᑲᑦ ᑲᑲᑦᑲᑦᑲᑦᑲᑦ
<b>Proponent</b> ᑲᑲᑦᑲᑦᑲᑦᑲᑦᑲᑦ	<b>Agnico Eagle Mines Ltd.</b> ᑲᑲᑦᑲᑦᑲᑦᑲᑦᑲᑦᑲᑦᑲᑦ

- Proposed gold mine and milling operation
- ᑭᑦᑲᑦᑲᑦᑲᑦᑲᑦ, ᑲᑲᑦᑲᑦᑲᑦᑲᑦᑲᑦ
- PHC Report issued January 2014 – FEIS expected May 2014
- ᑲᑲᑦᑲᑦᑲᑦᑲᑦ ᑲᑲᑦᑲᑦᑲᑦ ᑲᑲᑦᑲᑦᑲᑦᑲᑦ ᑲᑲᑦᑲᑦᑲᑦᑲᑦ 2014 - ᑲᑲᑦᑲᑦᑲᑦᑲᑦ ᑲᑲᑦᑲᑦᑲᑦᑲᑦ ᑲᑲᑦᑲᑦᑲᑦᑲᑦᑲᑦ ᑲᑲᑦᑲᑦᑲᑦᑲᑦᑲᑦ ᑲᑲᑦᑲᑦᑲᑦ ᑲᑲᑦᑲᑦᑲᑦᑲᑦᑲᑦ ᑲᑲᑦᑲᑦᑲᑦᑲᑦᑲᑦ 2014



# Kiggavik Uranium Mine

## ᐱᓂᓴᓐ ᓄᓄᓂᓴᓐ ᓄᓄᓂᓴᓐ ᓄᓄᓂᓴᓐ



<b>Review Phase</b> ᓂᓄᓂᓴᓐ ᓄᓄᓂᓴᓐ ᓄᓄᓂᓴᓐ	<b>3 – Commenced 2013 –</b> ᓄᓄᓂᓴᓐ ᓄᓄᓂᓴᓐ 2011
<b>Region</b> ᓄᓄᓂᓴᓐ	<b>Kivalliq ᐱᓂᓴᓐ</b>
<b>Proponent</b> ᓄᓄᓂᓴᓐ ᓄᓄᓂᓴᓐ	<b>AREVA Resources Canada</b> ᓄᓄᓂᓴᓐ ᓄᓄᓂᓴᓐ ᓄᓄᓂᓴᓐ

- Proposed uranium ore mine and milling operation
- ᓄᓄᓂᓴᓐ ᓄᓄᓂᓴᓐ ᓄᓄᓂᓴᓐ ᓄᓄᓂᓴᓐ ᓄᓄᓂᓴᓐ
- Pre-Hearing Conference Report issued July 2013
- ᓄᓄᓂᓴᓐ ᓄᓄᓂᓴᓐ ᓄᓄᓂᓴᓐ ᓄᓄᓂᓴᓐ ᓄᓄᓂᓴᓐ 2013
- FEIS expected September 2014
- ᓄᓄᓂᓴᓐ ᓄᓄᓂᓴᓐ ᓄᓄᓂᓴᓐ ᓄᓄᓂᓴᓐ ᓄᓄᓂᓴᓐ ᓄᓄᓂᓴᓐ 2014





# Jericho Diamond Mine ᓇᓂᓄ ᓇᓂᓄ

## ᓇᓂᓄᓇᓂᓄ



<b>PC No. 002 Issued</b>	<b>2004</b>
<b>Region ᓇᓂᓄᓇᓂᓄ</b>	<b>Kitikmeot ᓇᓂᓄᓇᓂᓄ</b>
<b>Status ᓇᓂᓄᓇᓂᓄ</b>	<b>Abandoned / Care and Maintenance</b> ᓇᓂᓄᓇᓂᓄ /ᓇᓂᓄᓇᓂᓄ ᓇᓂᓄᓇᓂᓄ
<b>Proponent</b> ᓇᓂᓄᓇᓂᓄ	<b>Shear Diamonds</b> ᓇᓂᓄᓇᓂᓄ

- Non-compliance with regulatory instruments & Project Certificate
- ᓇᓂᓄᓇᓂᓄ ᓇᓂᓄᓇᓂᓄ ᓇᓂᓄ ᓇᓂᓄᓇᓂᓄ ᓇᓂᓄᓇᓂᓄ
- AANDC inspection - ᓇᓂᓄᓇᓂᓄ ᓇᓂᓄᓇᓂᓄ
  - Minister’s authority to take measures to prevent, counteract, mitigate or remedy adverse effects regarding Jericho
  - ᓇᓂᓄᓇᓂᓄ ᓇᓂᓄᓇᓂᓄ ᓇᓂᓄᓇᓂᓄ ᓇᓂᓄᓇᓂᓄ ᓇᓂᓄᓇᓂᓄ, ᓇᓂᓄᓇᓂᓄ ᓇᓂᓄᓇᓂᓄ ᓇᓂᓄᓇᓂᓄ ᓇᓂᓄᓇᓂᓄ ᓇᓂᓄᓇᓂᓄ
- Site visit summer 2014 - ᓇᓂᓄᓇᓂᓄ ᓇᓂᓄᓇᓂᓄ 2014



# Doris North Gold Mine ᐃᐱᓕᓴ ᐃᐱᓕᓴ

## ᐃᐱᓕᓴ ᐃᐱᓕᓴ



<b>PC No. 003 Issued</b>	<b>2006</b>
<b>Region ᐃᐱᓕᓴᐃᓂᓴ</b>	<b>Kitikmeot ᓴᓱᓂᓴᐃᓂᓴ</b>
<b>Status ᓴᓂᐃᓂᓴ</b>	<b>Care &amp; Maintenance ᐃᐱᓕᓴᐃᓂᓴ ᓴᓱᓂᓴᐃᓂᓴ</b>
<b>Proponent ᐃᓴᐃᓂᓴᓂᓴᐃᓂᓴ</b>	<b>TMAC Resources Inc.</b>

- Gold mine ᐃᐱᓕᓴᐃᓂᓴ
- Care and maintenance in 2011
- ᐃᐱᓕᓴᐃᓂᓴ ᐃᓴᓂᓴᐃᓂᓴ 2011ᐃ
- Compliant with regulatory instruments & Project Certificate
- ᐃᓂᓴᐃᓂᓴ ᐃᓂᓴᐃᓂᓴ ᐃᓂᓴᐃᓂᓴ ᐃᓂᓴᐃᓂᓴ
- Current application to amend PC terms and conditions (NLCA 12.8.2) and NWB Type A Water Licence
- ᐃᓂᓴᐃᓂᓴ ᐃᓂᓴᐃᓂᓴ ᐃᓂᓴᐃᓂᓴ ᐃᓂᓴᐃᓂᓴ (ᐃᓂᓴᐃᓂᓴ ᐃᓂᓴᐃᓂᓴ 12.8.2) ᐃᓂᓴᐃᓂᓴ ᐃᓂᓴᐃᓂᓴ ᐃᓂᓴᐃᓂᓴ ᐃᓂᓴᐃᓂᓴ
- Site visit summer 2014 ᐃᓂᓴᐃᓂᓴ ᐃᓂᓴᐃᓂᓴ 2014

# Meadowbank Gold Mine

◁▷ᑦᑲᑎᓐᓃᑦᑐᄠ ᑭᑐᄠᑐᑦᑲᑲ



<b>PC No. 004 Issued</b>	<b>2006</b>
<b>Region</b> ᑈᑲᑲᑦᄠᓄᑲ	<b>Kivalliq</b> ᑭᓄᓕᓕᑦᄠ
<b>Status</b> ᑦᑲᓄᑈᓄᑲ	<b>Operations</b> ᑈᑲᑲᑦᑎᓕᑐᑦᑲ
<b>Proponent</b> ᓃᑦᄠᓄᑦᑲᑦᑐᓕ	<b>Agnico Eagle Mines Ltd.</b> ᓕᑈᓄᓕᓄᓄ ᑲᑈᑲᑲᓕᓴᓴᓕ ᑈᑐᓴᓄ

- Gold mine ᑭᑐᄠᑐᑦᑲᓄᑦᑲ
- In operation since 2008, operations cease 2018
- ᑈᑲᑲᑦᑎᓕᑐᑦᑲ 2008ᄠᓕ, ᑈᑈᓄᓄᓄᑈᓕᑐᓕ 2018ᄠ
- AEM currently investigating further development
- ᑈᓴᓄᓄᓄᓄᓄᓄᓄ ᑦᑲᑐᑈᑦᑐᓄᓄᓄᓄ ᑈᓄᓕᓕᑈᓄᓄᓄᓄᓄᓄᓄ
- Compliant with regulatory instruments & Project Certificate
- ᑈᓕᓄᓄᓄᓄ ᑈᓕᓄᓄᓄᓄᓄᓄᓄᓄ ᑈᓕᓕᓕᓄᓄᓄ ᑈᓕᓴᓄᓄᓄᓄᓄᓄ
- Site visit summer 2014 ᑈᓄᓄᓄᓄᓄᓄᓄᓄᓄᓄ ᑈᑐᓄᓄᓄ 2014



# Mary River Iron Ore Mine ᓄᓗᓴᓂᓂ

## ካልኩላዮታፕሮፕሬት

<b>PC No. 005 Issued</b>	<b>2012</b>
<b>Region ᐋልኮፕሊᓂᓴ</b>	<b>Qikiqtani ናፖፕፍርᓂᓂ</b>
<b>Status ናፍᓄᐃᓂᓴ</b>	<b>Construction; Early Revenue Phase under consideration</b> ካዲሮᐋᓂᓴ; ፖፕᓂᓴᓂ ᓄᐅᓴᐋᓂᓴፓፓ ᓄᓂፍ
<b>Proponent ᓄᓴፕᓂፍፍᓄፓፍ</b>	<b>Baffinland Iron Mines Corp.</b> ᐋᓂᓂᓂ ካልኩላᓂᓴᓂ ᓄᐋᓂᓴᓂ

- Iron mine ካልኩላᓂᓴ ᐅᓴፍᓂᓂᐋᓂᓴ
- Compliant with regulatory instruments & Project Certificate
- ᐅᓂᓴᓂ ᐅᓂᓴᓄᓴᐋᓂᓴ ᐋᓴ ᐱᓂᓂᓴፓፓ ᐋᓂᓴᓴፕᓂ
- Early Revenue Phase activities considered per NLCA 12.8.2 – awaiting Minister’s response
- ፖፕᓂᓴᓂ ፕᓄᐅᓴᐋᓂᓴፓፓ ᐱᓂᓂᐋᓂᓴ ᐋᓂᓴፕᓴፕ ᓄᓄᐋᓂ ᐋᓂᓴፕᓴᓂᓴ 12.8.2 – ፕᓂᓴᐋᓂ ፕᓄᓂᐋᓂᓴፓፓፍ
- Site visit summer 2014 ᐋᓄᓴፍᓄᓴᓂᓴ ᐋᓄᓴᓴፕ 2014



# Monitoring Programs: 12.8.2 Reconsideration of Project Certificate Terms and Conditions

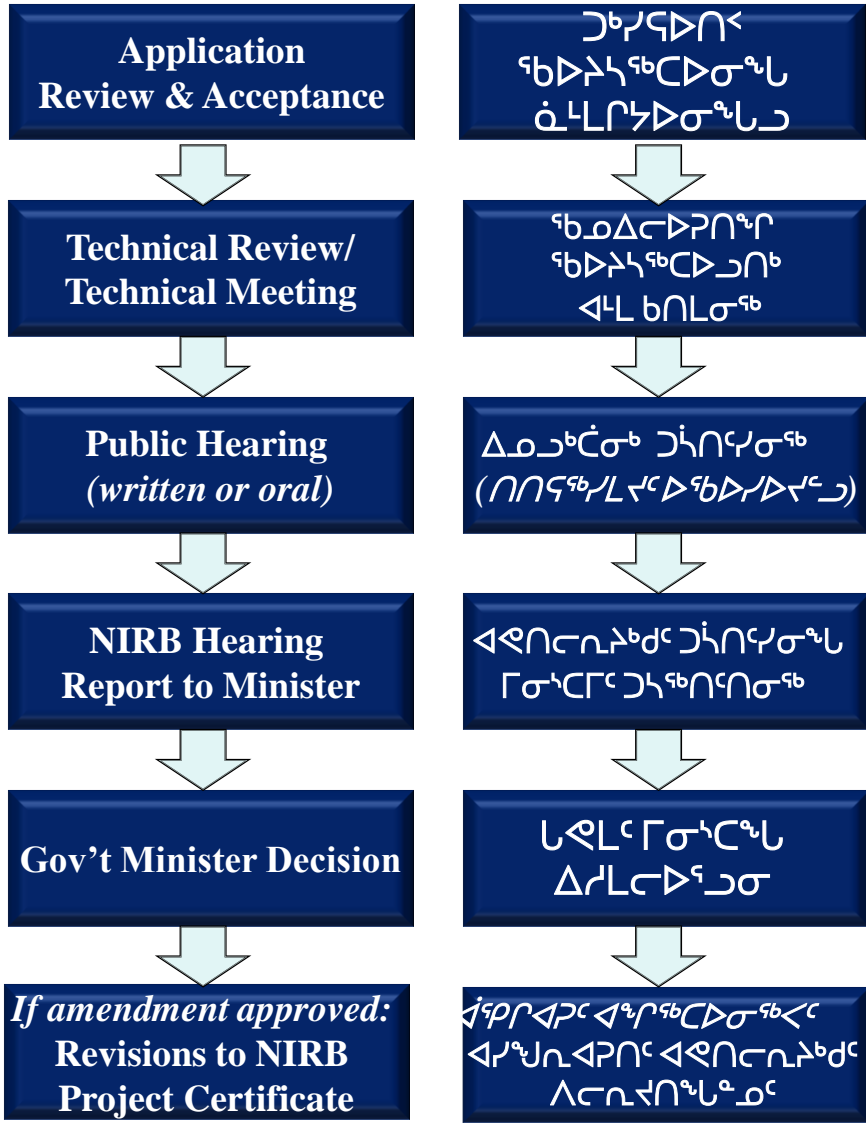
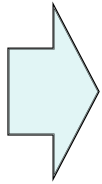
## ᑲᐅᐱᑦᐅᑦ: 12.8.2 ᐃᑦᐱᑦᐅᑦᐅᑦ ᐱᑦᐱᑦᐅᑦᐅᑦ ᐱᑦᐱᑦᐅᑦᐅᑦ

ᐱᑦᐱᑦᐅᑦᐅᑦ 4:  
ᐱᑦᐱᑦᐅᑦ  
ᑲᐅᐱᑦᐅᑦᐅᑦ

*ᑕᐃᑦᑲᐅᑦᐅᑦ  
ᐃᑦᐱᑦᐅᑦᐅᑦ  
ᐅᑦᑲᑦᐅᑦᐅᑦ  
ᐱᑦᐱᑦᐅᑦᐅᑦ*

**PHASE 4:  
Project Monitoring**

*Site Visits  
Annual Reports  
Possible Hearings*



Potential future developments...

𐌺𐌾𐌰𐌹𐌲 𐌰𐌻𐌰𐌸𐌰𐌺𐌰𐌸𐌰𐌸𐌰𐌸 ...





Lᑕᑌ

Thank you

Koana



## **Nunavut Impact Review Board**

**PO Box 1360**

**Cambridge Bay, NU**

**Toll Free: 1-866-233-3033**

**Fax: 1-867-983-2594**

**[info@nirb.ca](mailto:info@nirb.ca)**