

Richards Bay Mineral Claim

Gold, Silver, Copper, Lead

2019, 2020 & 2021 Surface Sampling Program

Presented by Moshi Kotierk

Nunavut Mining Symposium

May 11, 2022

Igloolik, Nunavut

m_kotierk@hotmail.com

(867)934-6347

Overview of Presentation

- Introduction to Prospecting
- Geologic Setting
 - Archean Metavolcanic and Metasedimentary area
 - Magnetic anomaly identified
- Field work conducted 2019, 2020 & 2021
 - Over 350 samples analyzed
- Mineral claim online staked February 2021
- Key results – High Gold, Silver, Lead

Introduction to Prospecting



Introduction to Prospecting

Geoscape Nunavut
THE WORLD BENEATH YOUR FEET

WHAT WE'VE FOUND SO FAR
Found primarily in:

Cenozoic:	Gravel Natural gas
Mesozoic:	Coal Natural gas Diamonds Oil
Paleozoic:	Zinc Silver Lead Oil
Precambrian:	Gold Chromium Zinc Silver Nickel Copper Lead Sapphire Iron Cadmium Uranium Platinum group metals Carving stone

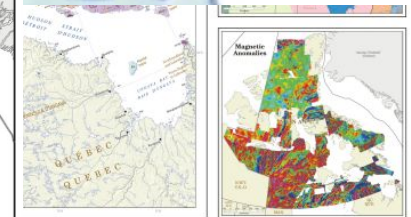
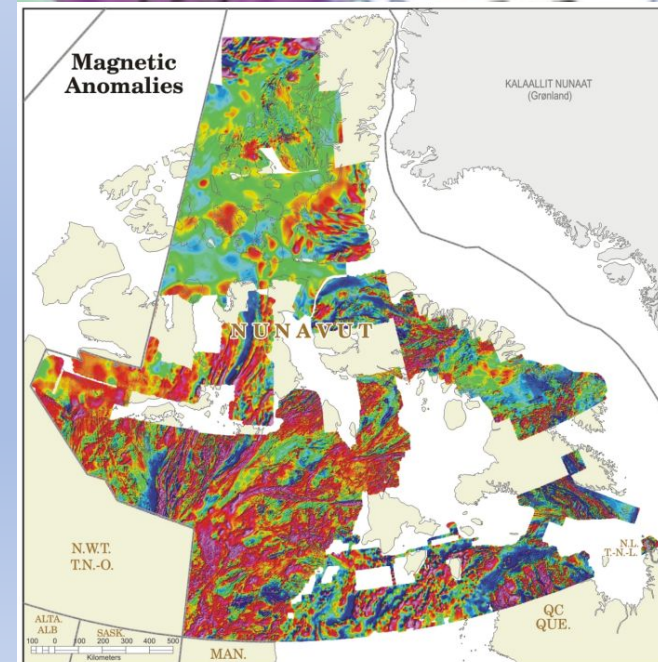
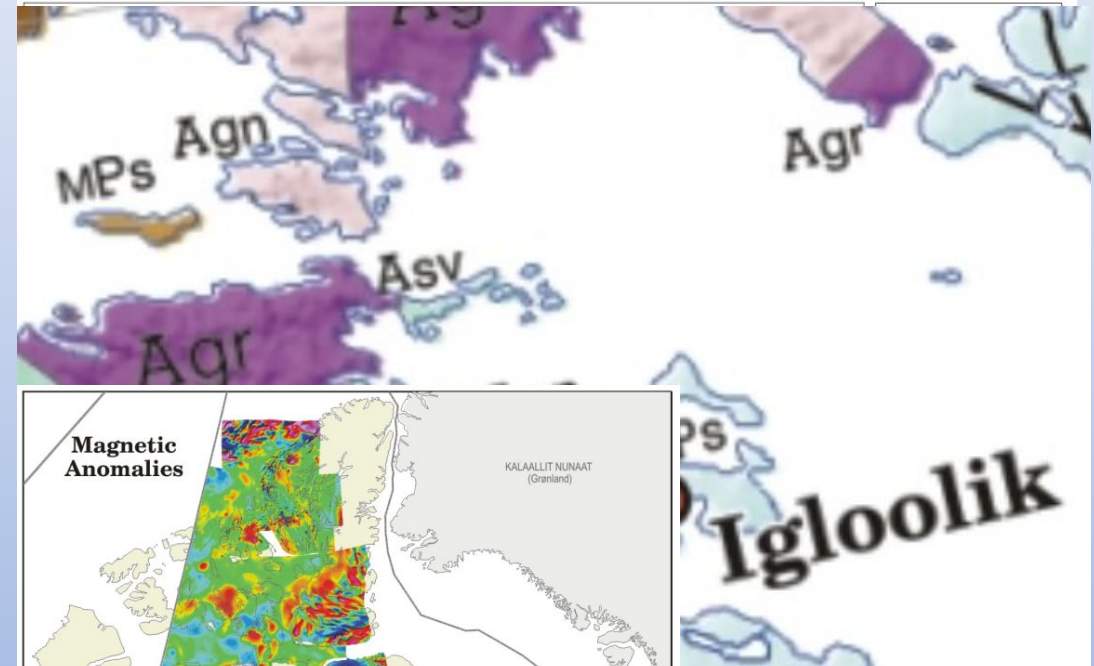
THE AGES OF ROCKS

AGES OLD BY OUR ANCESTORS

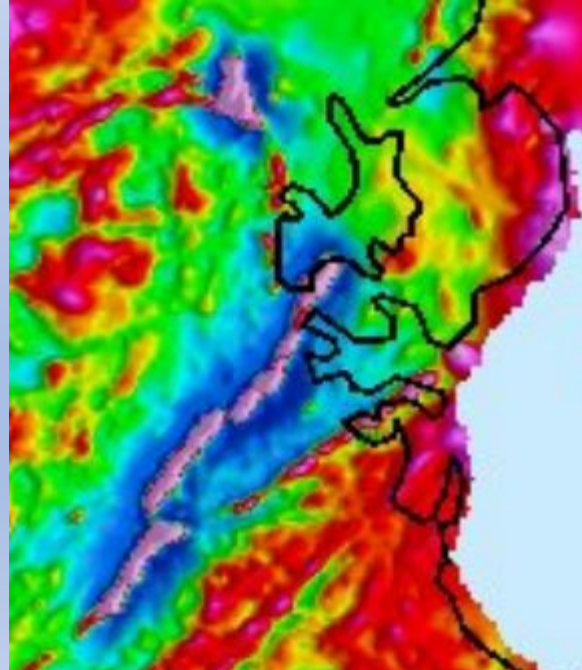
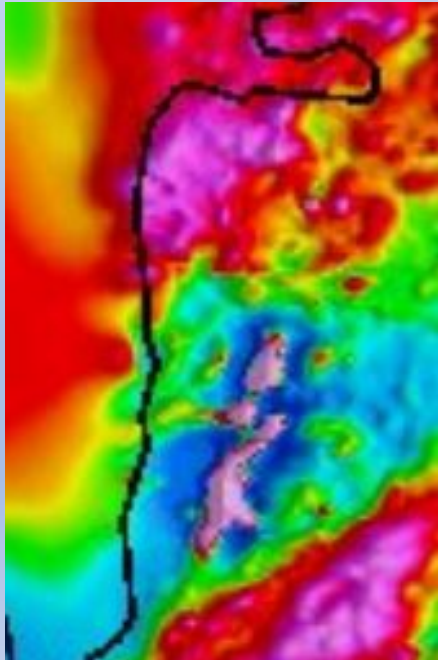
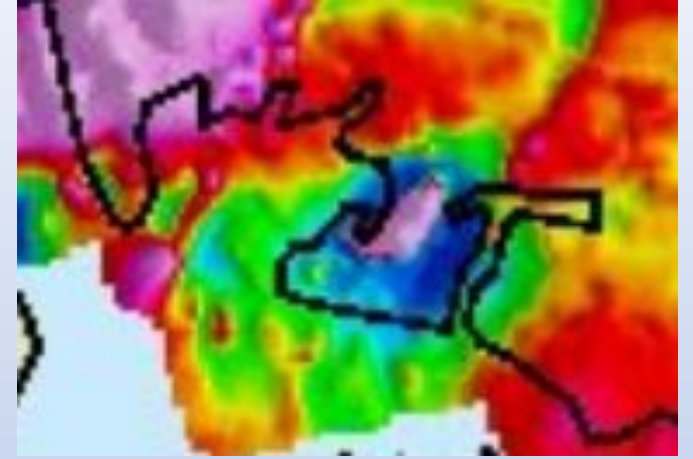
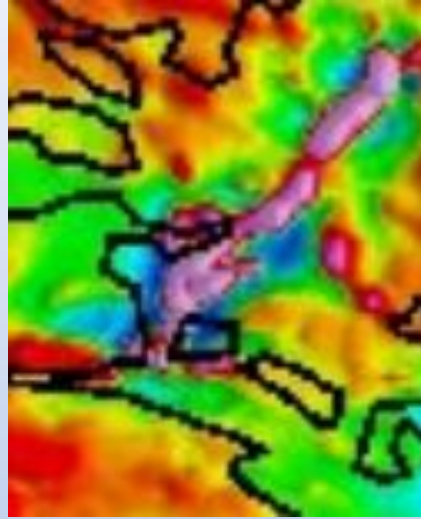
NEW ROCKS AND MINERALS ARE DISCOVERED TODAY

WELL-GRANTED (QVEELI'UMAVUT)

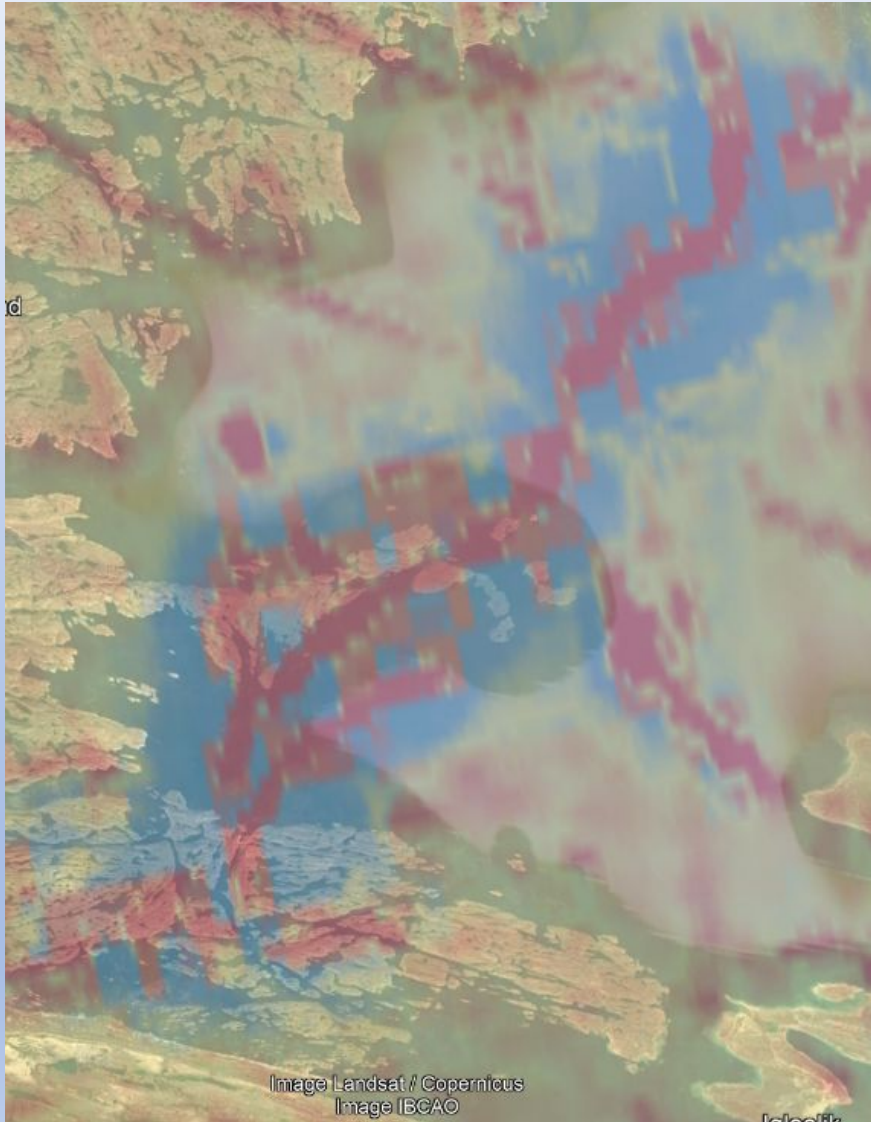
CELOZIOIC ROCKS



Magnetic Anomaly



Magnetic anomaly



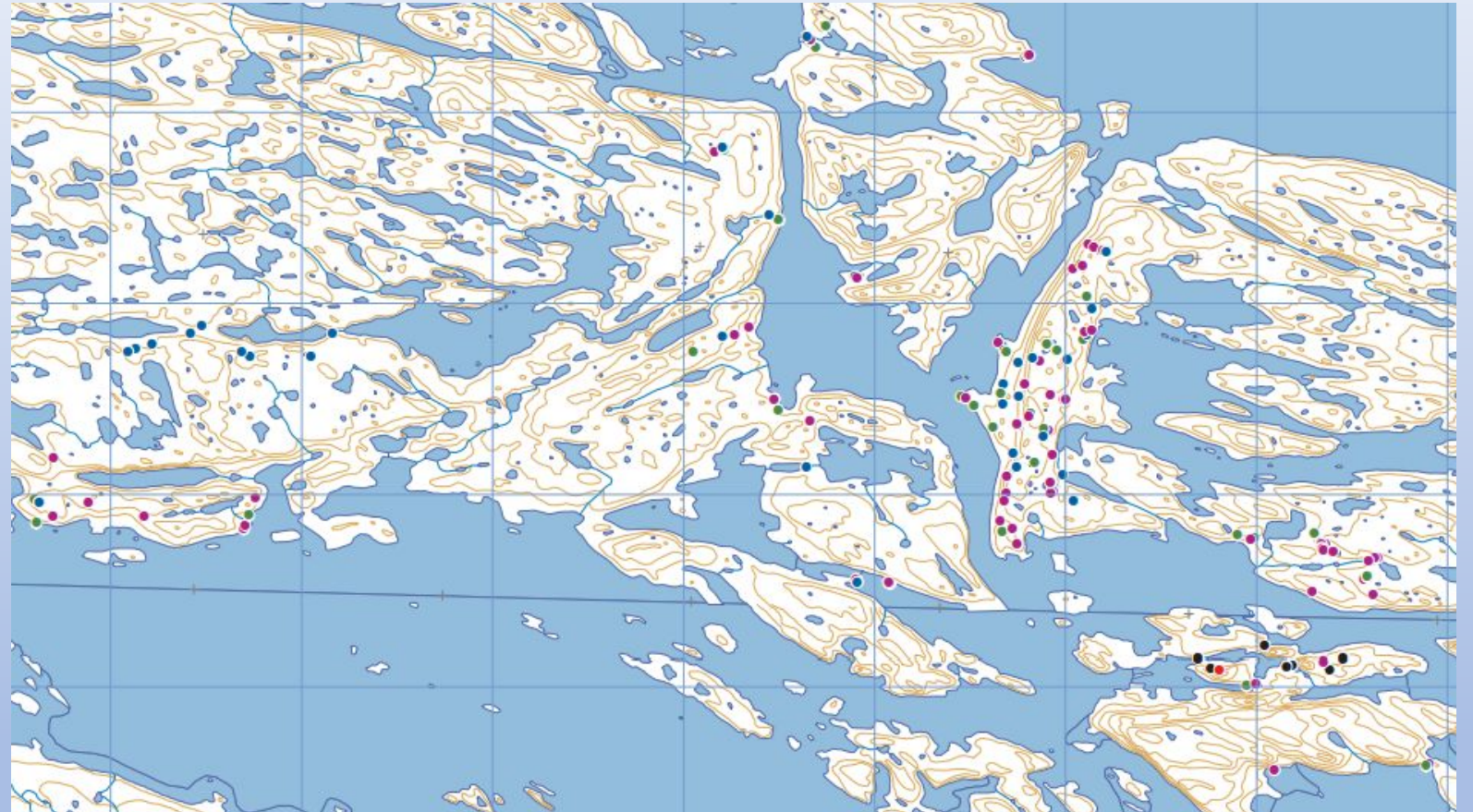
Magnetic anomalies approximately

- more 40 km long

- more than 5 km wide

2019 Field work

**Focused on Southern
Richards Bay**



First Year Gold Results



2020 Field work

Northern Richards Bay and some Southern Richards Bay



Key results – Northern Richards Bay

- Multiple high grade gold assays, including two quartz samples with 157.3 g/t Au and 15.4 g/t Au and a soil sample with 13 g/t Au.



2021 Sample Locations



Northern Richards Bay



Southern Richards Bay



High Gold

157 ppm Au - Quartz



13 ppm Au - Soil



High Lead/Silver

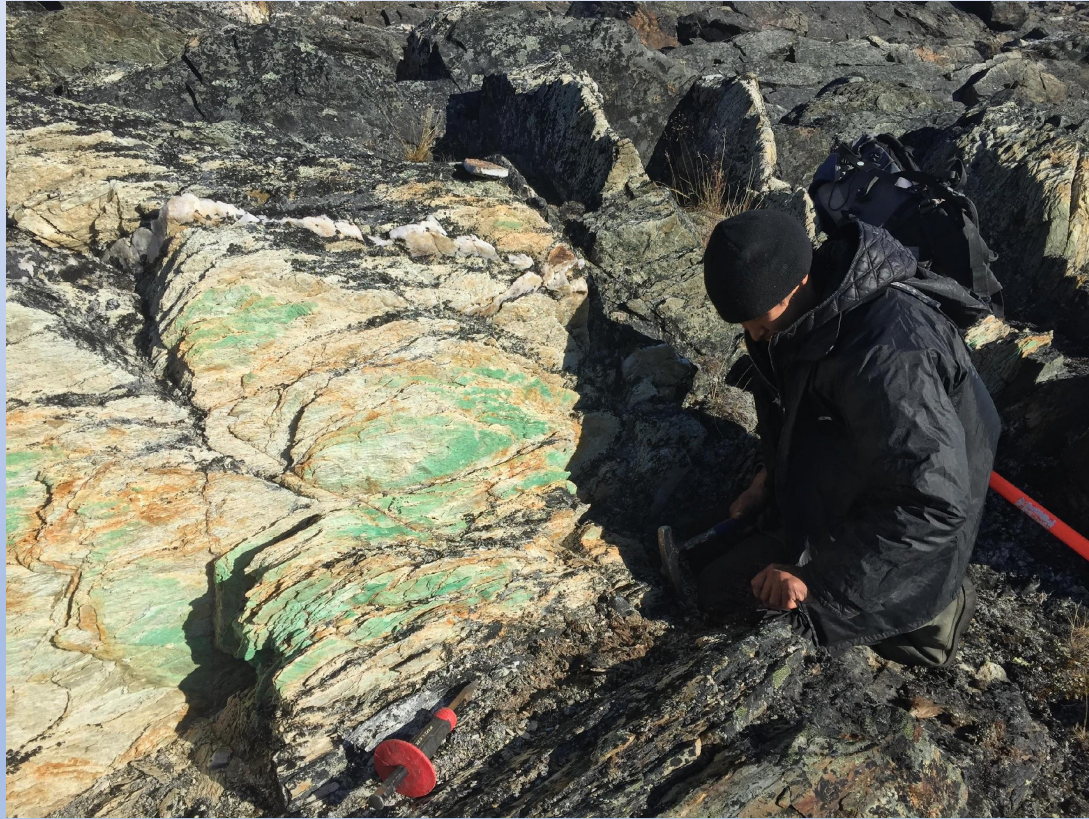


Gold Soils

960 ppb Au



More Photos





Claim area

- Online claimed February 2021
- Majority of metavolcanic belt staked.
- Regional scale faults from GSC mapping.
- Probable overburden-covered shear zones with untested gossans in adjacent ground.
- Iron is related to sulphide mineralization from quartz vein sampling to date.



Qujannamiik

- To Economic Development and Transportation for financial and educational support
- To Kenny Immaroitok and the late Joan Atuat Arnatsiaq – they were both integral to the project
- To my partner Rolanda Hanniliaq who's been supportive and patient as we do this