

Building a Long-Term Strategic Platform

- ❑ Agnico Eagle has identified Nunavut as a strategic platform with considerable long-term investment potential.
- ❑ We have the potential to transform the future of Nunavut for generations to come with multi-decades of benefits in terms of continuous employment and financial benefits for the communities and governments.
- ❑ Agnico Eagle currently employ 51 employees at Meliadine including 18 Inuit Beneficiaries and 834 employees at Meadowbank including 302 Inuit Beneficiaries.
- ❑ In February 2017, Agnico Eagle announced that its Board of Directors has approved the development of the Amaruq satellite deposit at Meadowbank and construction of the Meliadine project (approximately US\$1.2 billion will be invested).
- ❑ Caribou protection are an integrated part of our long term viability

Building a long-term Strategic Platform

❑ Meadowbank

- Acquired in 2007 from Cumberland Resources Ltd.
- In production since 2010 (End of mining activities in 2018)

❑ Amaruq - Exploration Discovery in 2013

- Satellite Deposit to Meadowbank – Approaching Development
- Start up expected in Q3 2019 (300,000 ounces of gold/year)

❑ Meliadine

- Acquired in 2010 from Comaplex Mineral Corp.
- Under construction (400,000 ounces of gold/year)
- Start-up Q3 2019





CARIBOU MONITORING PROGRAMS



AGNICO EAGLE



Caribou Monitoring programs

- ❑ Caribou monitoring programs have been developed through a regulated and collaborative process with input from governments, regulatory bodies, Regional Inuit Associations, Hunter and Trapper Organization (HTO) and communities, and industry.
- ❑ The existing Nunavut regulatory regime allows for all stakeholders and communities to participate in the review and shaping of well-designed mineral exploration and development projects that are protective of wildlife and reducing impacts on caribou.
- ❑ The Caribou protection Plan are links to the Project Certificate issued by Nunavut Impact Review Board (NIRB).
- ❑ Industry continually adapts to Inuit Qaujimajatuqangit (IQ), new information, and new approaches to monitoring and reducing impacts on caribou.
- ❑ Long term viability of caribou herds can successfully coexist with a sustainable and beneficial mineral development industry.

Caribou Monitoring Programs – Collaboration with GN



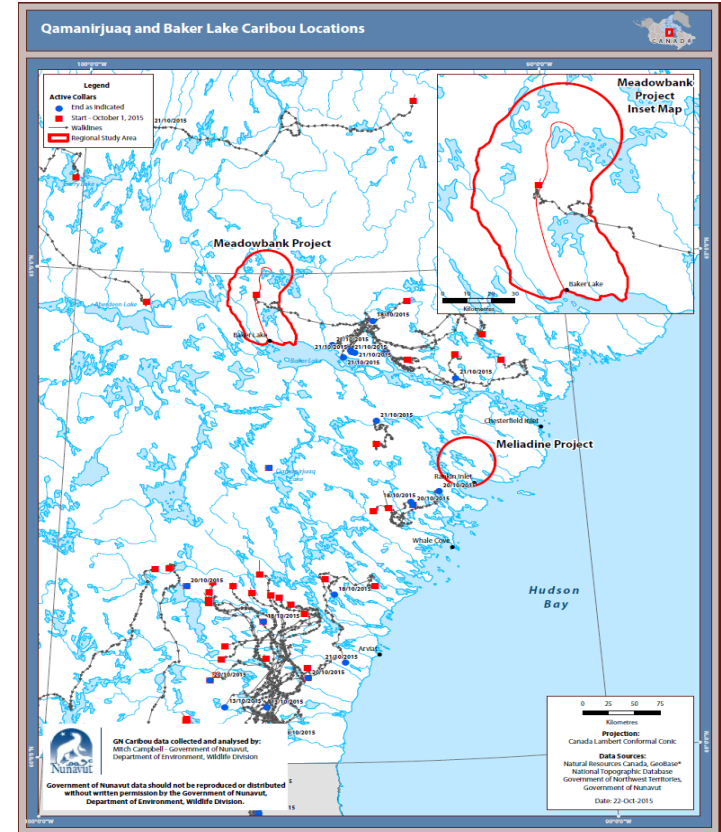
- ❑ Caribou radio-collaring program in collaboration with the Government of Nunavut (GN).
- ❑ Better understanding caribou population in the Kivalliq area.
 - ✓ 25 collars in 2008, 2009 and 2011; plus 5 more in 2013
 - ✓ Signed a 3 year Memorandum of Understanding (MOU) agreement in 2013,
 - ✓ Renewed in March 2017 for 3 years.

Caribou Monitoring Programs from 2008 to 2017

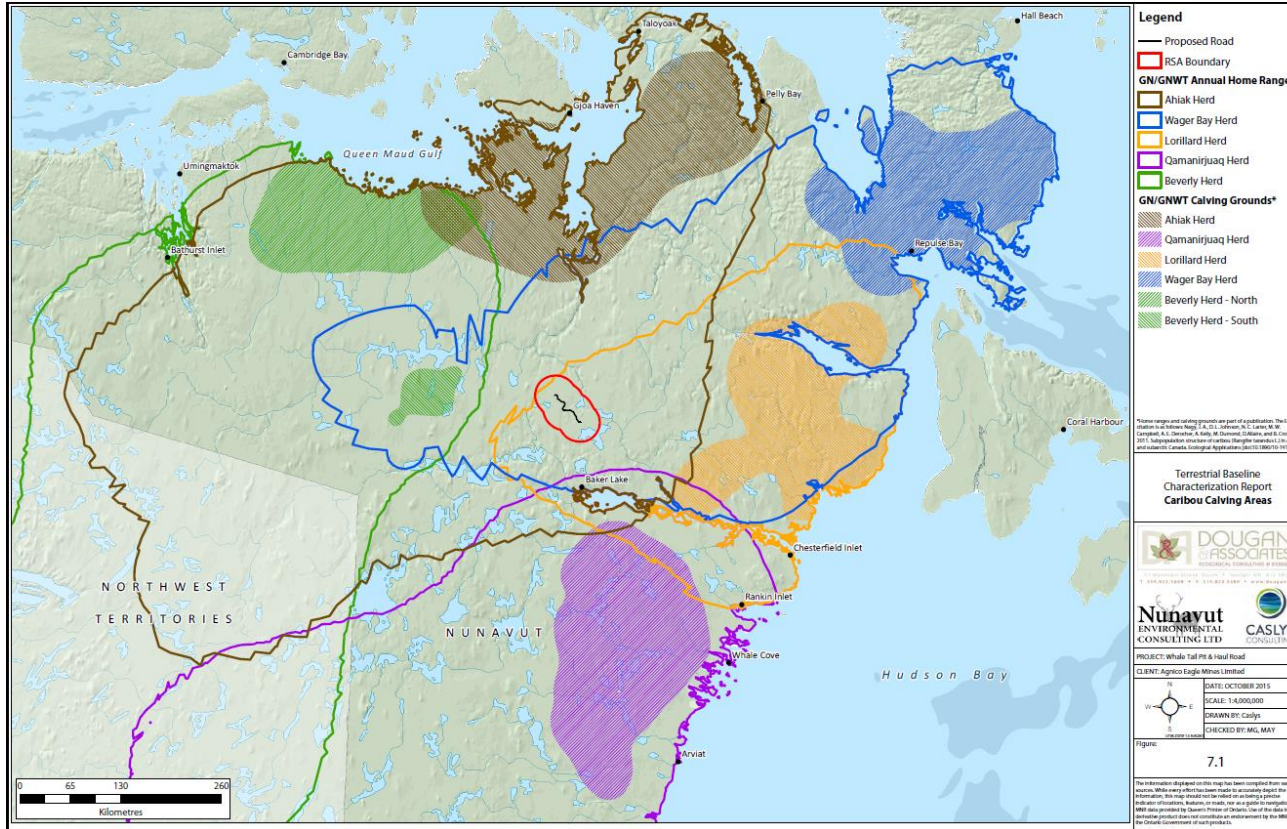


AGNICO EAGLE

- ❑ GN DOE leads regional caribou monitoring, including:
 - ✓ periodic aerial surveys
 - ✓ Providing maps and real-time data
- ❑ Caribou Migration Management
- ❑ Mine Site and Road surveys
- ❑ Agnico Eagle also collects:
 - ✓ Hunter harvest study data (HHS)
 - ✓ Ecological Land Classification data



Herds Ranges and Calving Grounds



Caribou Monitoring Programs – Meadowbank Mine



- Training for all employees and road operators on respecting wildlife
 - Wildlife have the right of way!
 - Respect the 50 km/hr speed limit

- Environment department conducts road wildlife surveys weekly, twice weekly between October and December, sometimes everyday during caribou migration.

- Operators communicate with gatehouse/ dispatch (security) and the environment department

- AEM communicates with GN officer and HTO as often as possible

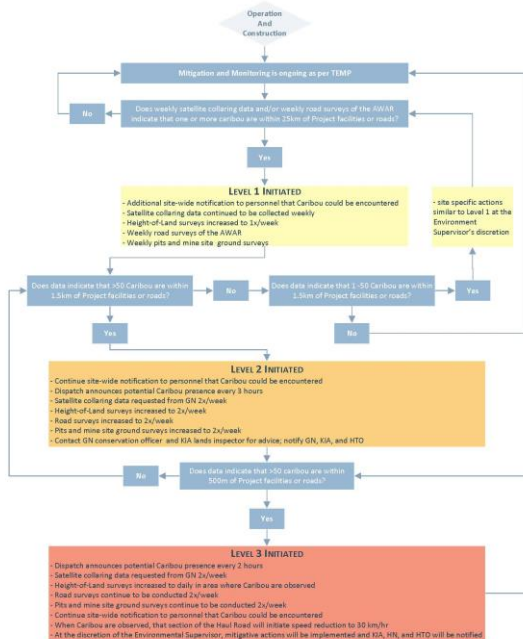
- Road closures as needed

Caribou Protection Decision Trees - Meadowbank Mine



AGNICO EAGLE

ADAPTIVE MANAGEMENT: CARIBOU

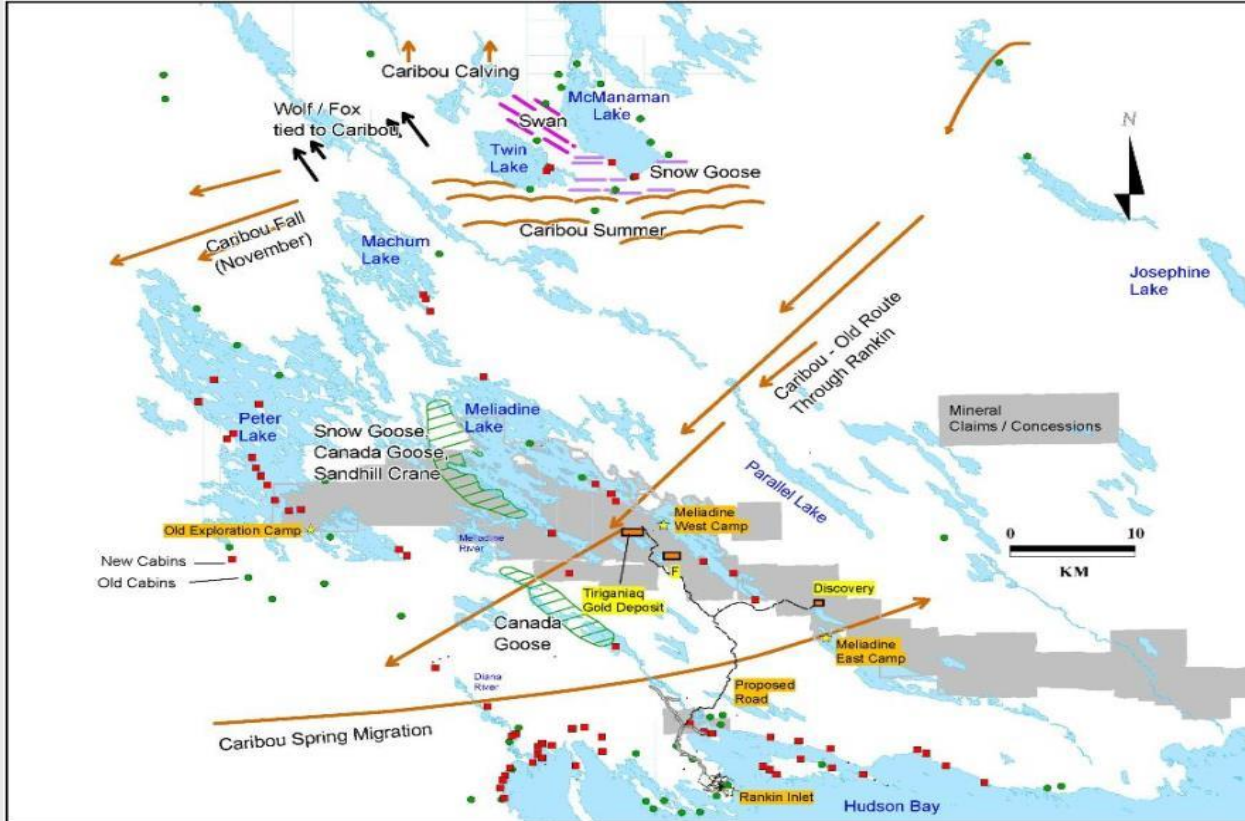


Level 1 and 2 – ramp up monitoring;
Level 3 (RED) Cease operations

LEVEL 3 INITIATED

- Dispatch announces potential Caribou presence every 2 hours
- Satellite collaring data requested from GN 2x/week
- Height-of-Land surveys increased to daily in area where Caribou are observed
- Road surveys continue to be conducted 2x/week
- Pits and mine site ground surveys continue to be conducted 2x/week
- Continue site-wide notification to personnel that Caribou could be encountered
- When Caribou are observed, that section of the Haul Road will initiate speed reduction to 30 km/hr
- At the discretion of the Environmental Supervisor, mitigative actions will be implemented and KIA, HN, and HTO will be notified

Caribou Migration Routes – Meliadine Project



Caribou Protection Measures – Meliadine Project

- ❑ Commitment to increase monitoring when caribou herd moves within a defined range of the site;
- ❑ Commitment to suspend all outside drilling and mining activity when caribou herd moves onto the site;
- ❑ No low flying helicopter flights when caribou near site
- ❑ In 2016, outside activities were stop more than 100 hours.





PATH FORWARD



AGNICO EAGLE



Refreshed Approach - The What

- ❑ Integrated approach to develop effective monitoring and mitigation controls
 - Work with all the stakeholders and communities
 - Recent workshops for Whale Tail Permitting created fluid discussions with multiple stakeholders
 - Ensures a balanced approach
 - Venue to learn from each other
 - Opportunity to enhance existing monitoring and mitigation programs (ex: Hunter and Harvest Study)

- ❑ Establish a mining roundtable for Caribou Mitigation
 - Creates knowledge sharing and lessons learned
 - Creates effective solutions and an approach to establish best practice controls
 - Establishes framework for operational effectiveness

- ❑ Peer review of existing research
 - Develop effective Study Scopes to establish a balanced approach for development in the north and mitigation of caribou

Matna! Thank You! Merci!

