



ᐱᐱᐱᐱᐱᐱ

ᐱᐱᐱᐱᐱᐱ ᐱᐱᐱᐱᐱᐱ

PAUKTUUTIT

INUIT WOMEN OF CANADA



www.pauktuutit.ca



Tungasuritsi!

It is my pleasure to present Pauktuutit Inuit Women of Canada to you.

I invite you to learn more about the realities of Inuit women and the work Pauktuutit does through our mandate, advocacy, and department projects.

By working with government, community leaders and Inuit organizations, we support Inuit women to reach their full potential in safe, happy communities.

Nakurmiik!

Our Mandate

Pauktuutit is the national representative organization of Inuit women in Canada. We foster greater awareness of the needs of Inuit women, advocate for equality and social improvements, and encourage the full participation of Inuit women in their communities, regions and the national life of Canada.



About Pauktuutit

Pauktuutit was established in 1984 and is led by a 14-member Board of Directors representing Inuit Nunangat, urban centres, and youth.

Regional Directors

Anne Curley, North Baffin

Geela Maniapik, South Baffin

Rebecca Kudloo, Kivalliq

Annie Buchan, Kitikmeot

Leena Metuq, Nunavik, Hudson Coast

Pasha Arngak, Nunavik, Ungava Coast

Gerri Sharpe, Yellowknife

Anita Pokiak, Western Arctic

Charlotte Wolfrey, Nunatsiavut

Billie-Jo Barnes, Urban

Martha Flaherty, Urban

Alyssa Carpenter, Youth

Laura Churchill, Youth

Parniga Akeeagok, Iqaluit

Executive Board Members



Anne Curley
Vice-President



Rebecca Kudloo
President



Charlotte Wolfrey
Secretary-Treasurer



Inuit in Canada

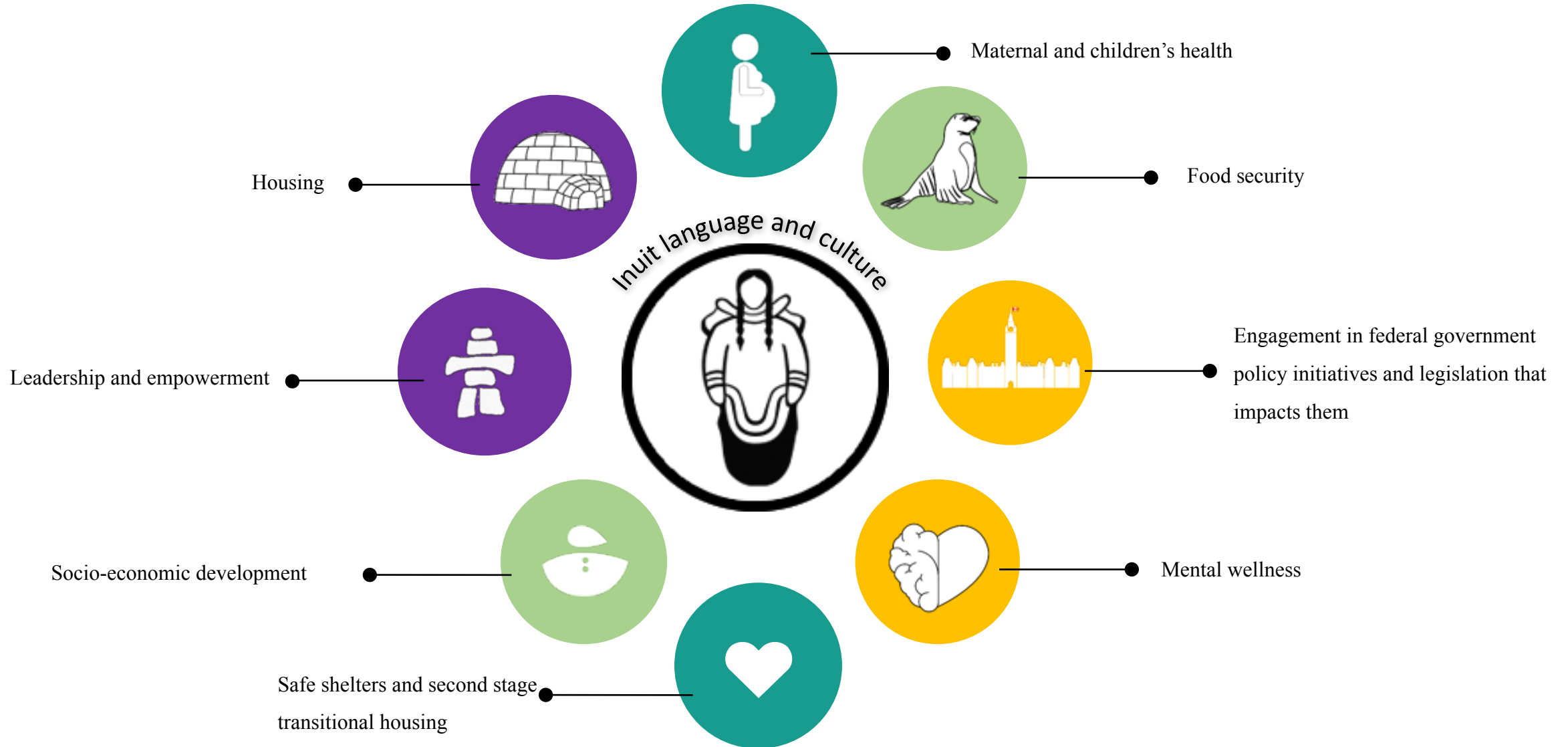
History

- Traditionally nomadic across the Arctic
- Residential Schools
- Forced Relocation

Today

- Over 60,000 Inuit in Canada
- 51 communities across the Arctic
- Almost 30% of Inuit have moved to urban centres
- Fastest growing population in Canada
- Four land claim regions
- Inuit Qaujimajatuqangit (IQ)

Needs of Inuit Women Today



Social and Economic Development

Pauktuutit's Socio-Economic Department has a mandate to cover a broad range of social and economic and issues, with strategic direction given by the Board of Directors. This department includes work in the areas of political equality and supporting women's leadership, education, housing, early learning and child care, the protection and promotion of traditional knowledge, resource extraction, environmental issues including climate change, and national and international engagement.



Social and Economic Development

Previous Research: Impact of Resource Extraction on Inuit Women and Families in Qamani'tuaq, Nunavut



- Qualitative and quantitative research on the effects of resource extraction in the Baker Lake
- Research findings:
 - Mining is an important channel of community economic development
 - Increased alcohol consumption
 - Increased family tensions
 - Incidents of violence
 - Lack of child care contributes to increased neglect and decreased school attendance
 - Lack of community resources and supports
 - Sexual harassment and workplace safety

Social and Economic Development

Current Initiatives: Inuit Women's Economic Prosperity and Safety in the Resource Extraction Industry



- Identify and address workplace sexual harassment and violence
- All four regions
- By developing and maintaining active partnerships to:
 - Create model workplace policies and procedures
 - Address sexual harassment and violence in the resource extraction industry

Nakurmiik Qujannamiik Thank You

www.pauktuutit.ca



info@pauktuutit.ca



1-800-667-0749
613-238-3977

