



North Arrow

MINERALS INC.



Naujaat Community Access Trail
*A Collaborative Approach to
Building Infrastructure in Nunavut*

*Nunavut Mining Symposium
April 2, 2019*

TSXV: NAR



CAUTIONARY STATEMENT

North Arrow

MINERALS INC.

**Forward
Looking
Information**

This presentation contains projections and forward looking information that involve various risks and uncertainties, including, without limitation, statements regarding the potential extent of mineralization, resources, reserves, exploration results and plans and objectives of North Arrow Minerals Inc. These risks and uncertainties include, but are not restricted to, the amount of geological data available, the uncertain reliability of drilling results and geophysical and geological data and the interpretation thereof and the need for adequate financing for future exploration and development efforts. There can be no assurance that such statements will prove to be accurate. Actual results and future events could differ materially from those anticipated in such statements. These and all subsequent written and oral forward-looking statements are based on the estimates and opinions of management on the dates they are made and are expressly qualified in their entirety by this notice. The Company assumes no obligation to update forward looking statements should circumstances or management's estimates or opinions change.

**Qualified
Person under
NI 43-101**

Disclosure of a scientific or technical nature related to North Arrow's projects in this presentation has been reviewed and approved by Ken Armstrong, P.Geo. President and CEO of North Arrow and a Qualified Person under NI 43-101.



NAUJAAT COMMUNITY ACCESS TRAIL

North Arrow
MINERALS INC.

Presentation Summary

- 1. Naujaat Diamond Project Overview – *The Need for an Access Trail***
- 2. North Arrow Led Access Trail Studies**
Archaeology, Ecological Mapping, Preliminary Engineering, Wildlife Observation
- 3. The Collaboration: Hamlet Takes the Lead**
Plain Language Summary Provided to NIRB and the NPC
- 4. Continuing Studies, Construction Plan and Financing Path.**



NORTH ARROW MINERALS - PROJECTS

North Arrow

MINERALS INC.

Advanced Stage

Assessing a known kimberlite or diamond deposit

1. Naujaat Project (100%)

Discovery Stage

Next stage of diamond exploration could lead to discovery

- 2) Mel Project (100%)
- 3) Loki Project (100%)
- 4) LDG Project (~40% NAR with DDC)
- 5) Pikoo Project (100%)
- 6) Luxx Project (100%)

Grassroots

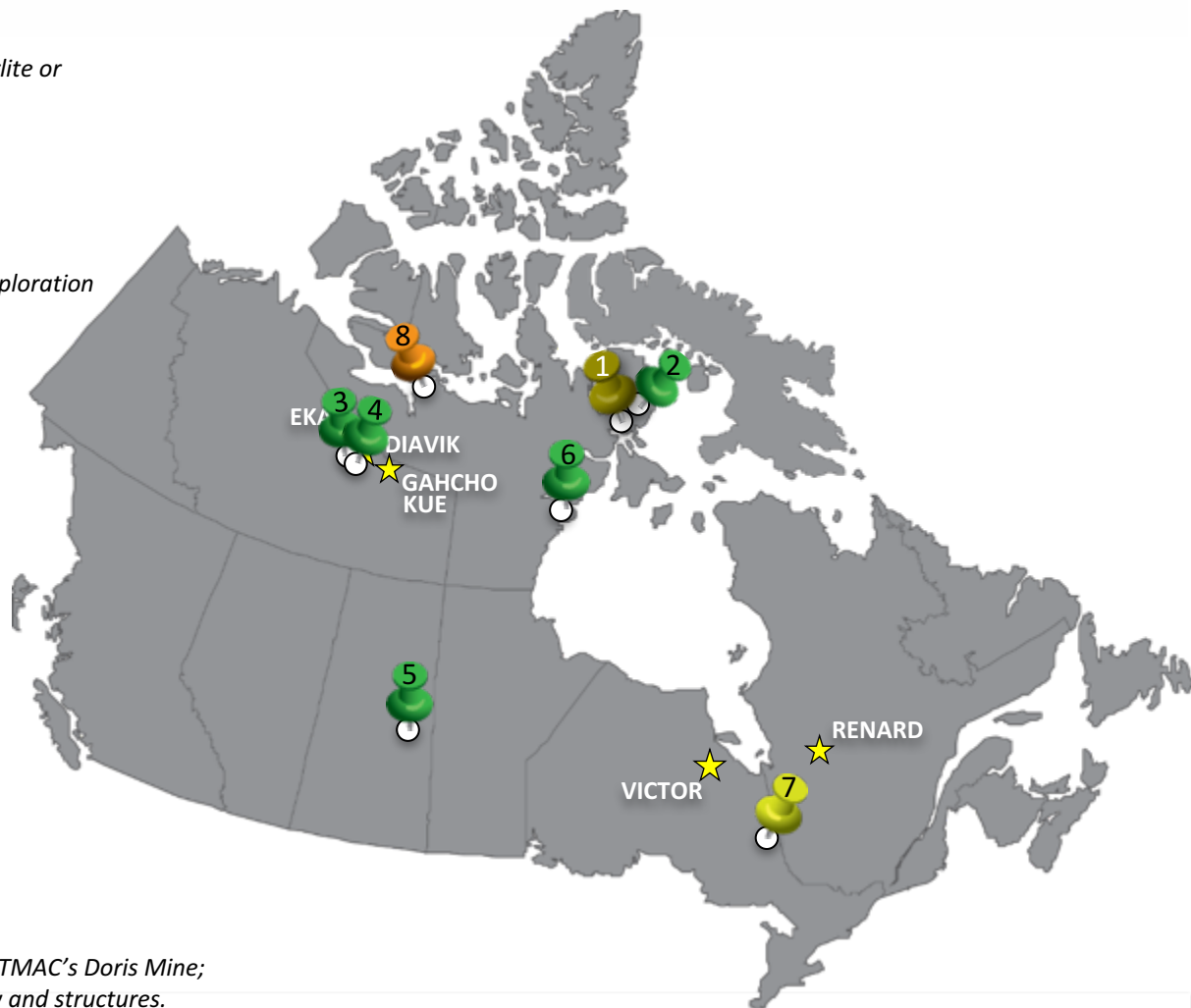
Target development

7. Timiskaming Project (80% with SWY)

Brownfields Gold

8. Hope Bay Project (100%)

Within 3km of TMAC's Doris Mine; similar geology and structures.



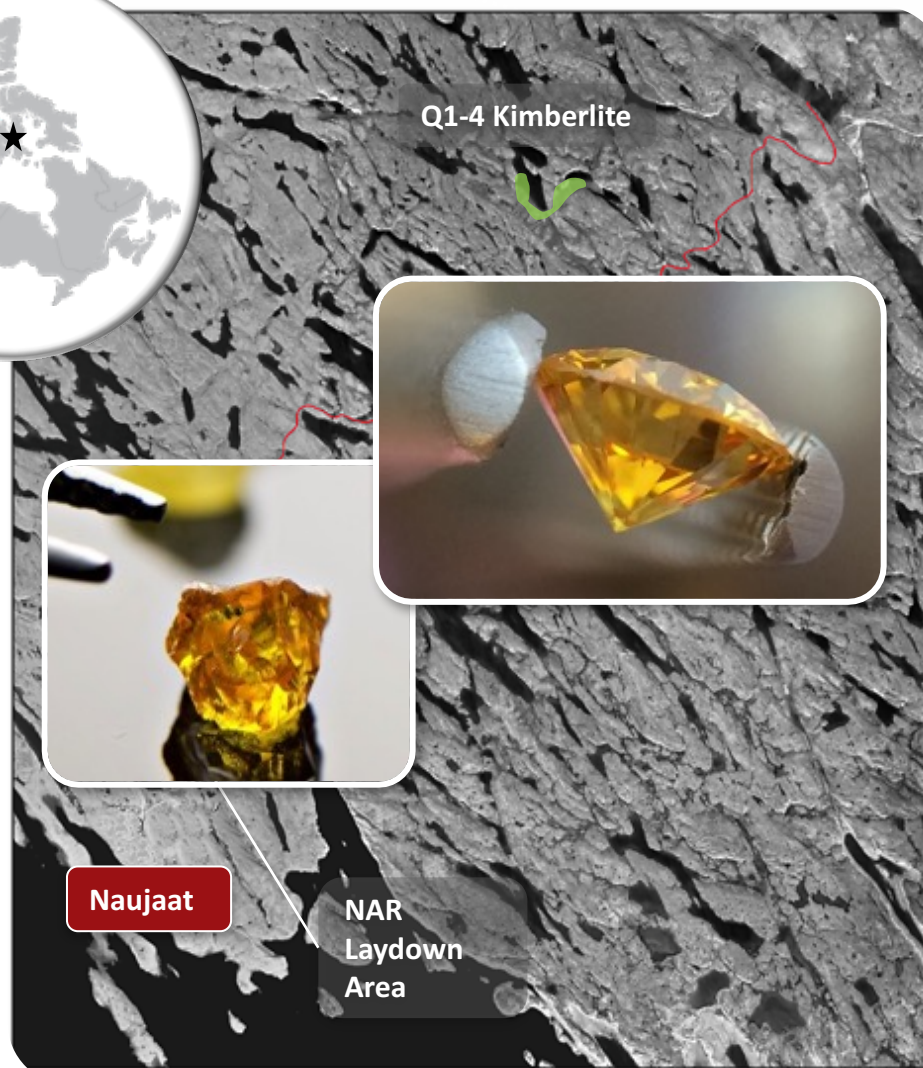


NAUJAAT PROJECT – TICKS ALL THE BOXES

North Arrow
MINERALS INC.

- ✓ Jurisdiction
- ✓ Near tide water
- ✓ Large tonnage
- ✓ Good inferred resource* grade
- ✓ Blue sky potential
- ✓ Low strip ratio

Unique diamond value proposition



* CAUTION – Mineral Resources are not Mineral Reserves and do not have demonstrated economic viability

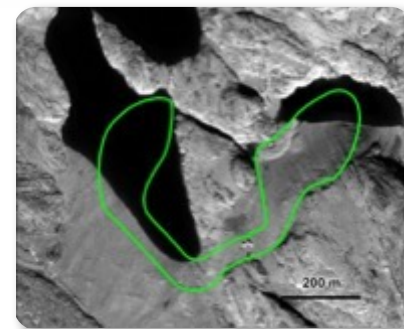


NAUJAAT PROJECT – Q1-4 KIMBERLITE

North Arrow
MINERALS INC.

- Determine the amount of kimberlite...

=48.8 million tonnes*



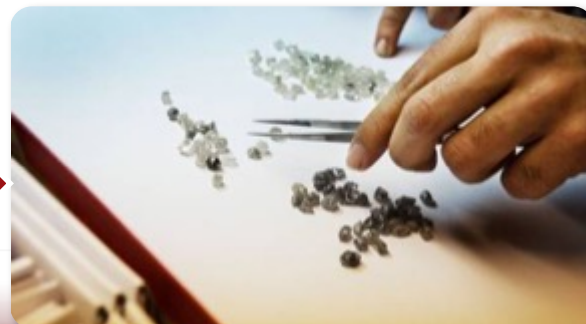
- Determine the number of carats of diamonds...

**=53 carats of diamonds
per hundred tonnes of kimberlite****



- Determine the value of the diamonds in the kimberlite...

=?



* From May 2013 NI 43-101 Inferred Mineral Resource Statement – Mineral Resources are not Mineral Reserves and do not have demonstrated economic viability.

** Carats per hundred tonne is a 'total recovery grade' and does not represent the recoverable grade.



Q1-4 2014 SAMPLING LOCATION

North Arrow



Approximate surface trace of kimberlite

2014 A28 Bulk Sample Site

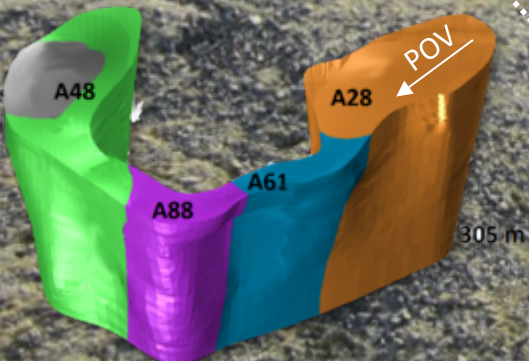
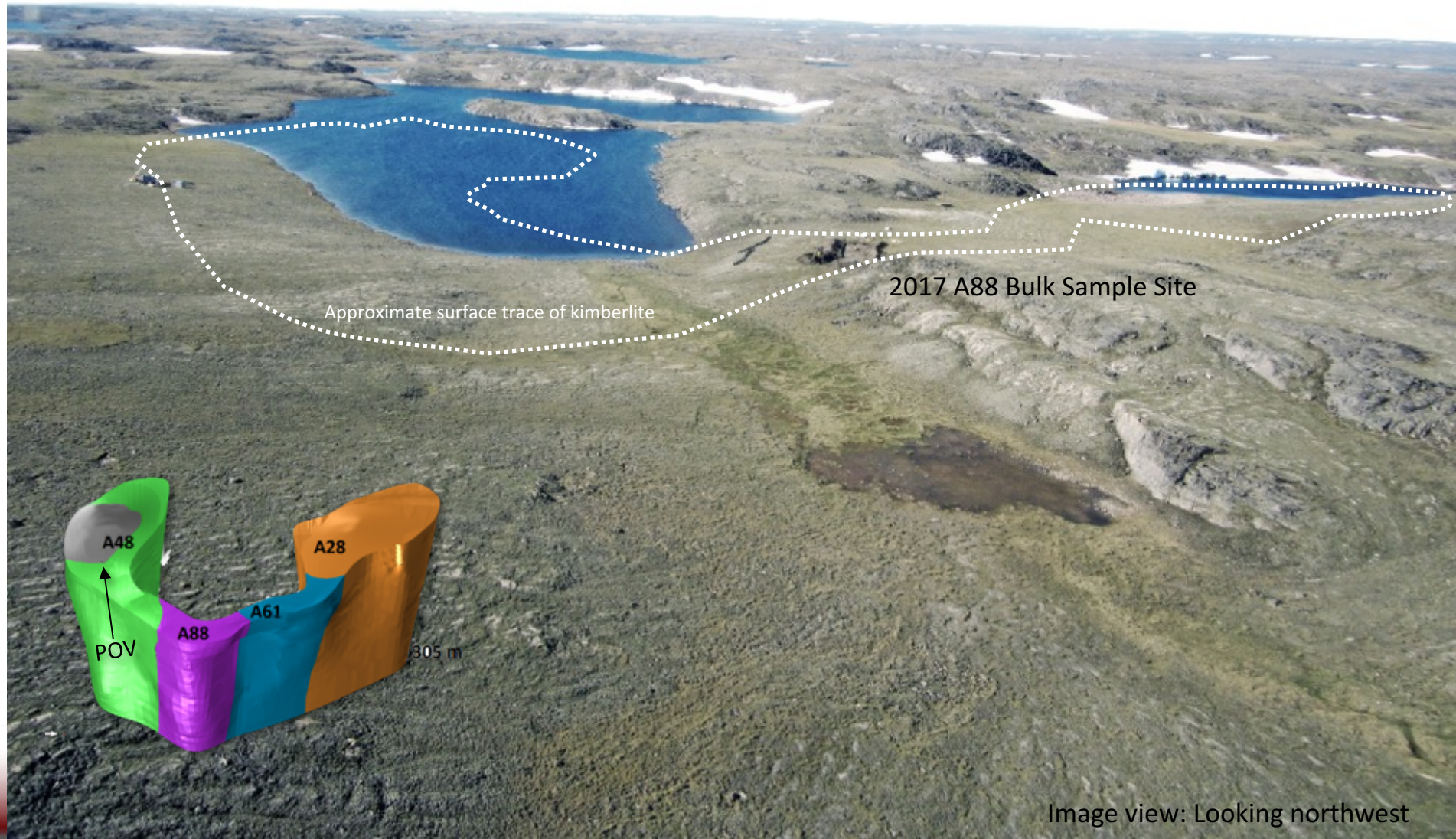


Image view: Looking southwest



Q1-4 2017 SAMPLING LOCATION

North Arrow
MINERALS INC.



Approximate surface trace of kimberlite

2017 A88 Bulk Sample Site

A48

A28

A61

A88

POV

305 m

Image view: Looking northwest



Q1-4 SAMPLING PROCESS 2014 & 2017

- Kimberlite was scooped into the bags by excavator.
- Bags delivered by helicopter to laydown area in Naujaat.
- Trucked to beach, barged to sealift & transported to Montreal.
- Trucked to Thunder Bay for diamond recovery.





NAUJAAT PROJECT – Q1-4 KIMBERLITE

North Arrow
MINERALS INC.

Two Mini-Bulk Samples Have Been Conducted

2014



1688 mega-bags = 1,350 tonnes of kimberlite = 384 carats



2017



250 mega-bags = 210 tonnes of kimberlite = 64.25 carats



1560 tonnes
~2000 round
trip helicopter
flights!



DIAMOND VALUE QUESTIONS REMAIN

North Arrow
MINERALS INC.

- Recoverable grade of 30 carats per hundred tonnes.
- White diamonds alone are not valuable enough.
- Orangey-yellow are more valuable but questions remained...

Are there enough of them? How big do they get? What is the quality of the larger stones?

10,000 tonne sample
required to answer
these questions



...or ~13,000 helicopter round trips!!



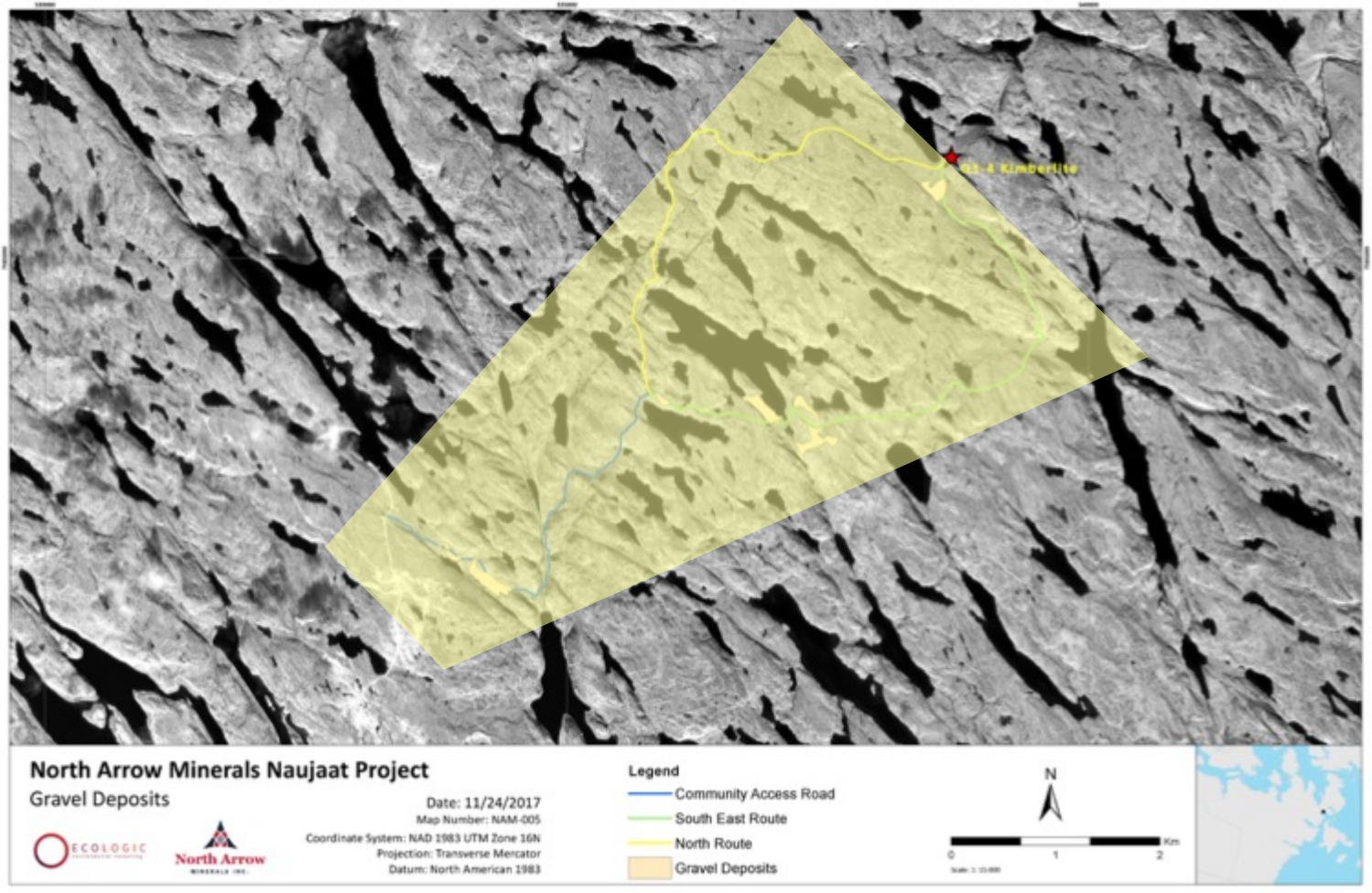


2017 ACCESS TRAIL RELATED STUDIES

North Arrow
MINERALS INC.

Two road related studies completed in 2017

1. Possible routing of trail to Q 1-4; *ecology & engineering study, including prelim costing. (existing ATV trail – blue and green chosen)*
2. Second study looked at historical use around the proposed routes; *archaeology study.*



ARCHAEOLOGY STUDY RESULTS

In 7 days of fieldwork, 118 archaeological and land use sites were located and documented.

Fun Fact: Naujaat is home to the Naujan Thule Site: a type locale of the Thule people (proto-inuit); circa 1300-1500 ad











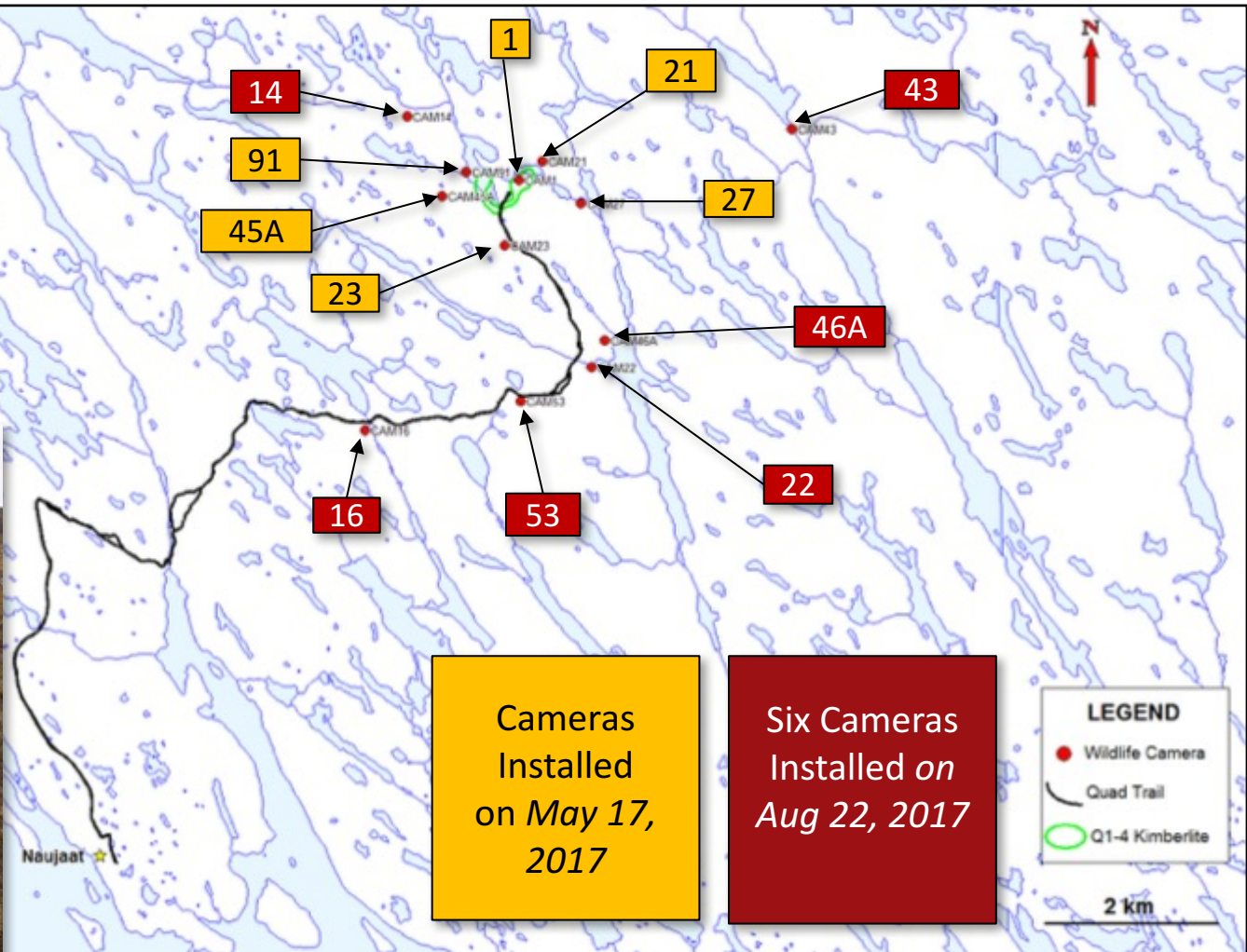


12 WILDLIFE CAMERAS INSTALLED

North Arrow
MINERALS INC.

Thanks to Sabina Gold and Silver for loaning the cameras!

To Collect information on timing and number of caribou in the area







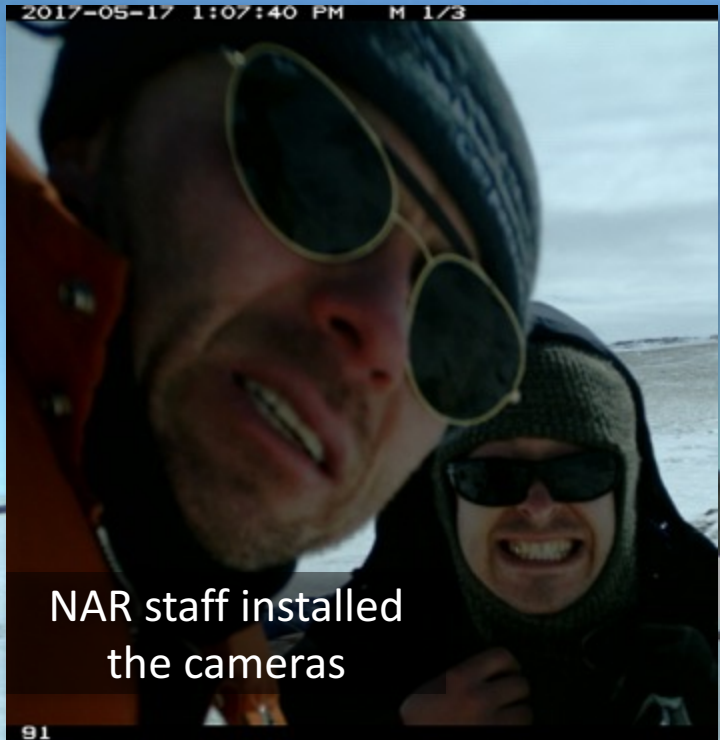












NAR staff installed the cameras



Leo Akkuarjuk & Tommy Mablik, working for the Arviq HTO changing memory cards and batteries

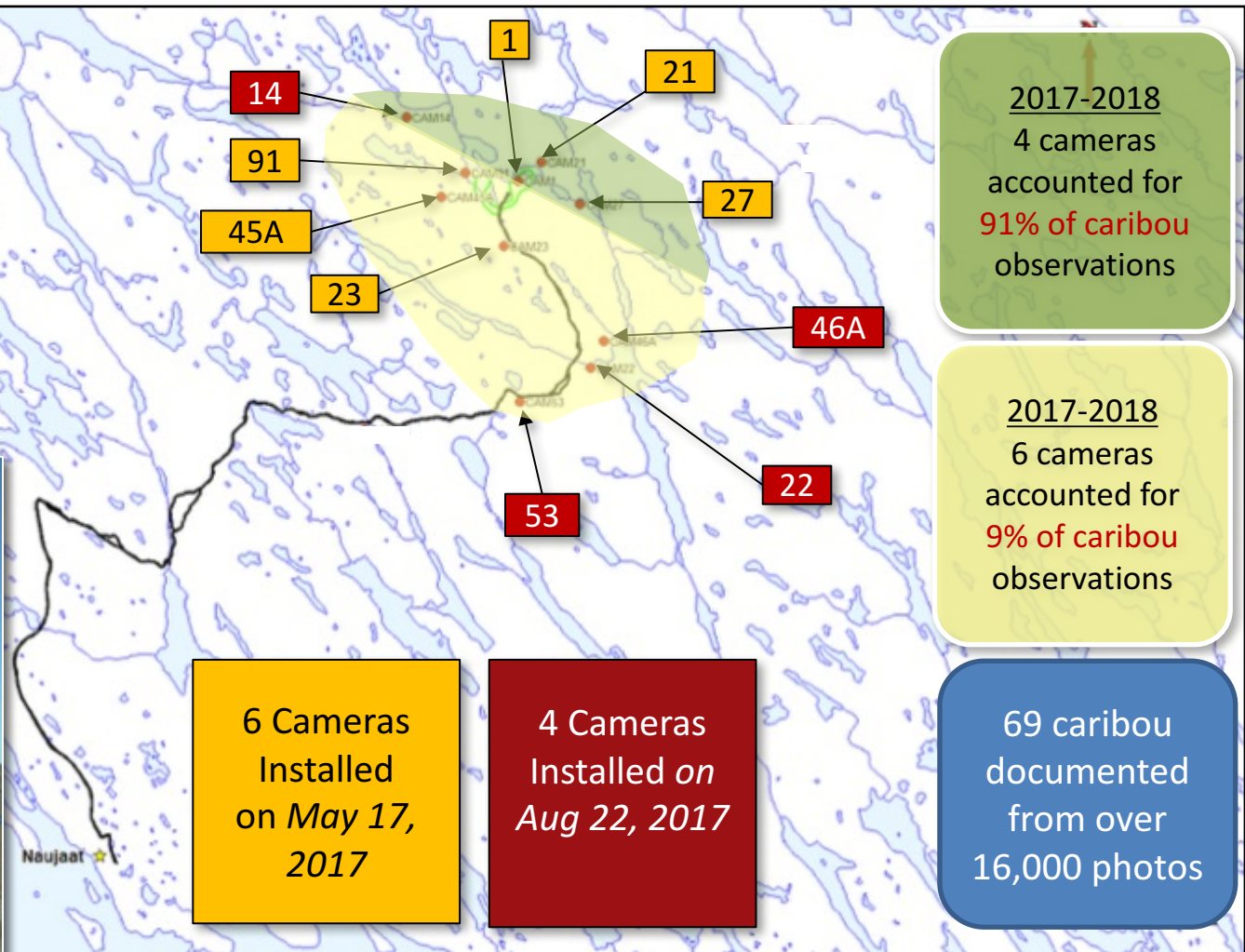


10 ACTIVE WILDLIFE CAMERAS

North Arrow

MINERALS INC.

To collect information on timing and number of caribou (and other animals) in the area



Data based on 2017 / 2018 observation period: August 2017 to end of June 2018 – 10 months



RESULTS: ECOLOGIC & ONSITE'S 2017 WORK

North Arrow
MINERALS INC.

ECOLOGIC EcoLogic Consultants Ltd & Onsite Engineering



- Best route for the Access Trail is the existing ATV path.
- Upgrade to 'Access Trail' would reduce impact on water crossings; 1 bridge 3 to 4 culverts.
- Little to no blasting required.
- Five aggregate sources identified along the way.
- Total cost from \$3.3 to \$4.3 million.



North Arrow

MINERALS INC.

Naujaat Community Access Trail

Community Presentation

March 21, 2019



North Arrow

MINERALS INC.

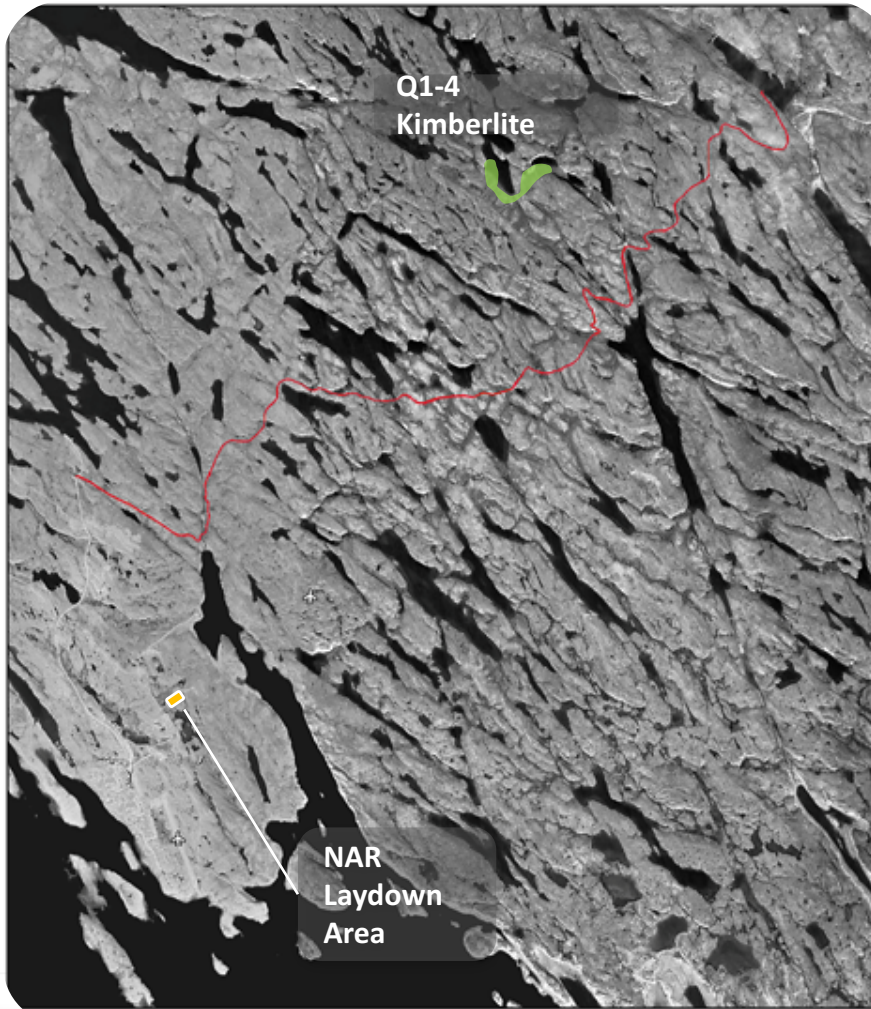
ᑲᑭᑦ ᓄᑦᑦᑦᑦᑦ
ᐱᑦᑦᑦᑦᑦᑦᑦᑦ ᐱᑦᑦᑦᑦᑦᑦᑦᑦ

*Community Presentation
March 21, 2019*



NAUJAAT COMMUNITY ACCESS TRAIL

North Arrow
MINERALS INC.



- The trail will follow the existing ATV trail to the southeast to where it crosses a stream about 200 m north of where the stream flows into the north end of Naujaat Inlet.
- ᐃᑦᑲᑦ ᐃᑦᑲᑦᑲᑦᑲᑦ ᐃᑦᑲᑦᑲᑦᑲᑦ ᑲᑲᑦᑲᑦᑲᑦᑲᑦ ᑲᑲᑦᑲᑦᑲᑦᑲᑦ ᑲᑲᑦᑲᑦᑲᑦᑲᑦ ᑲᑲᑦᑲᑦᑲᑦᑲᑦ.
- From there the trail will mostly follow the ATV trail to the northeast, ending at a large gravel source about 1.8 km inside Naujaat's municipal boundary.
- ᐃᑦᑲᑦ ᐃᑦᑲᑦᑲᑦᑲᑦ ᐃᑦᑲᑦᑲᑦᑲᑦᑲᑦᑲᑦ ᑲᑲᑦᑲᑦᑲᑦᑲᑦᑲᑦ, ᑲᑲᑦᑲᑦᑲᑦᑲᑦᑲᑦ ᑲᑲᑦᑲᑦᑲᑦᑲᑦᑲᑦᑲᑦ ᑲᑲᑦᑲᑦᑲᑦᑲᑦᑲᑦ ᑲᑲᑦᑲᑦᑲᑦᑲᑦᑲᑦ.



NAUJAAT COMMUNITY ACCESS TRAIL

North Arrow
MINERALS INC.

The Hamlet has teamed with three companies to help with engineering, environmental studies, permitting, early-stage financing and potential construction:

- **Onsite:** routing, design and potential construction of the trail.
- **EcoLogic:** permitting and environmental studies.
- **North Arrow Minerals:** funding for Onsite and Ecologic's pre-construction work on the trail.



ONSITE
Engineering

ECOLOGIC
environmental consulting



North Arrow
MINERALS INC.



COMMUNITY ACCESS TRAIL STATUS & FUNDING

Permitting Status

NIRB screening project proposal (underway)

Funding - ~\$5 million needed for ~14km Access Trail

- CanNor: applied March 1 (\$3M request)
- Gov't Nunavut, ED&T (~\$0.45M; Apply in April 2019)
 - *Community Transportation Initiative*
 - *Strategic Investment Program: Nunavut Economic Foundations Fund (training / economy building)*
- North Arrow (~\$0.5M; >\$0.25M so far)
 - *Paying 'Southern Costs' (e.g. permitting and engineering consultants)*
 - *June 2019 study of snow melt*
 - *Possible payment for use of Trail to access Q1-4*
- Transport Canada: National Trade Corridors Fund – Northern Call for Proposals (~\$1M; Applied March 29)
- Others (Private Foundations; other government programs)





CONNECTING PAST PRESENT AND FUTURE

North Arrow
MINERALS INC.

Past

- Awareness of the archaeological sites; traditional land use education for youth.

Present

- Easier and safer access to hunting grounds, aggregate sources, and potential carving stone.

Future

- Tourism – Inland tundra guiding, archaeology tours, gateway to Ukkusiksalik National Park
- Potential diamond mine; at the very least kimberlite carving stone!

By working together North Arrow and the Hamlet of Naujaat hope to achieve what would have been very difficult to accomplish had they worked separately.

ᑭᓄᓐᓇᓂᓐ Qujannamiik!



North Arrow
MINERALS INC.

Ken Armstrong
President & CEO

Nick Thomas
*Community and Investor
Relations Manager*

Suite 960-789 West Pender Street
Vancouver, BC
Canada V6C 1H2
Tel: +1.604.668.8354
Fax: +1.604.336.4813

info@northarrowminerals.com

[@narminerals](https://twitter.com/narminerals)



[northarrowminerals](https://www.facebook.com/northarrowminerals)



www.northarrowminerals.com



TSXV: NAR

